

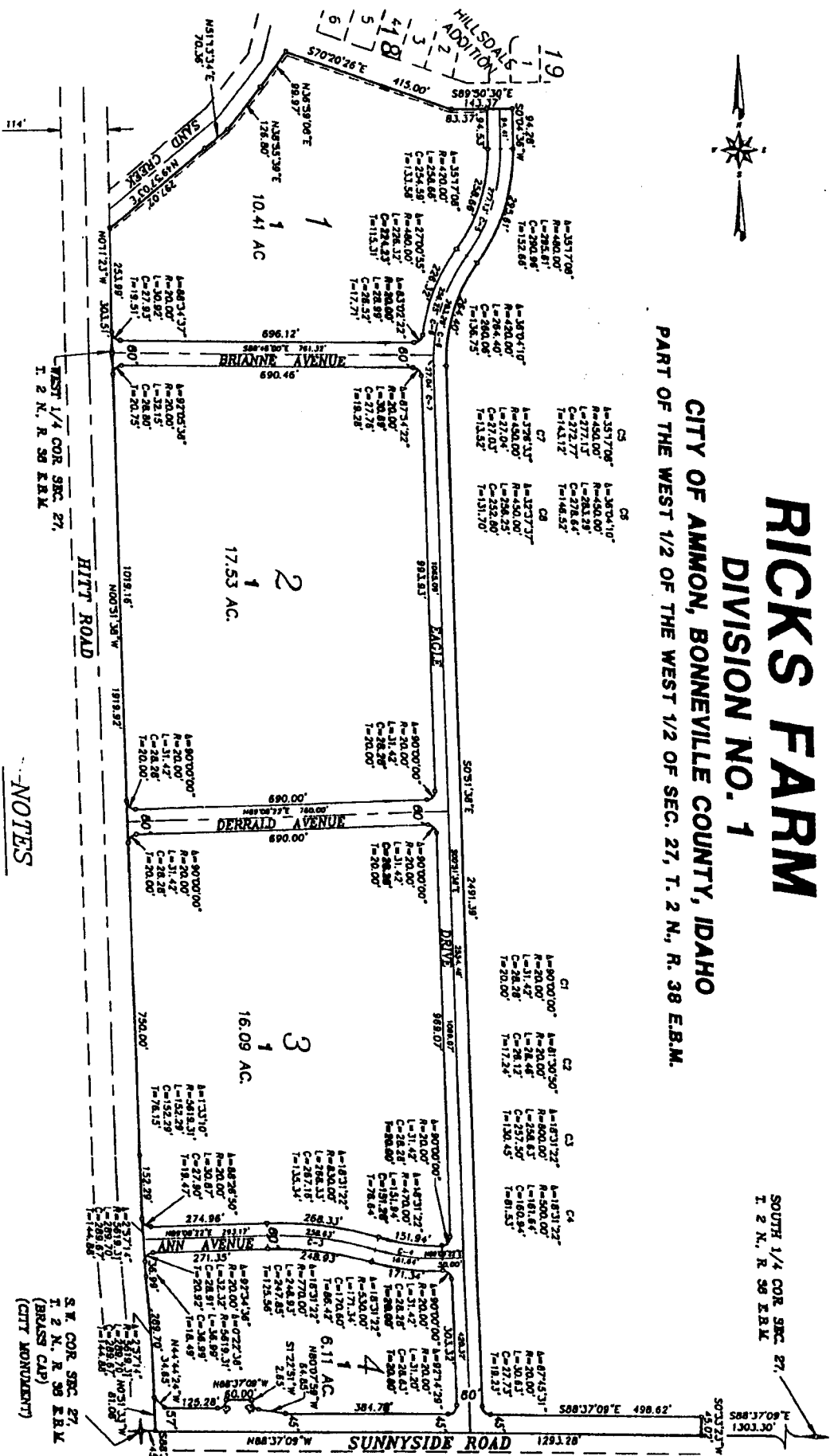


RICKS FARM

DIVISION NO. 1

CITY OF AMMON, BONNEVILLE COUNTY, IDAHO
 PART OF THE WEST 1/2 OF THE WEST 1/2 OF SEC. 27, T. 2 N., R. 38 E.B.M.

SOUTH 1/4 COR. SEC. 27,
 T. 2 N., R. 38 E.B.M.



NOTES

- indicates a 1/2" x 24" iron rod placed with a yellow plastic cap marked L.S. 3385.
- utility easements are 8' through each lot unless otherwise shown.
- a 10' wide utility easement is reserved along the street side of all lots.



First American Title Company
 Idaho Falls, Idaho 83404
 This sketch is made solely for the purpose of assisting in locating the premises. The company assumes no liability for alleged loss or damage which may result from reliance on this map.