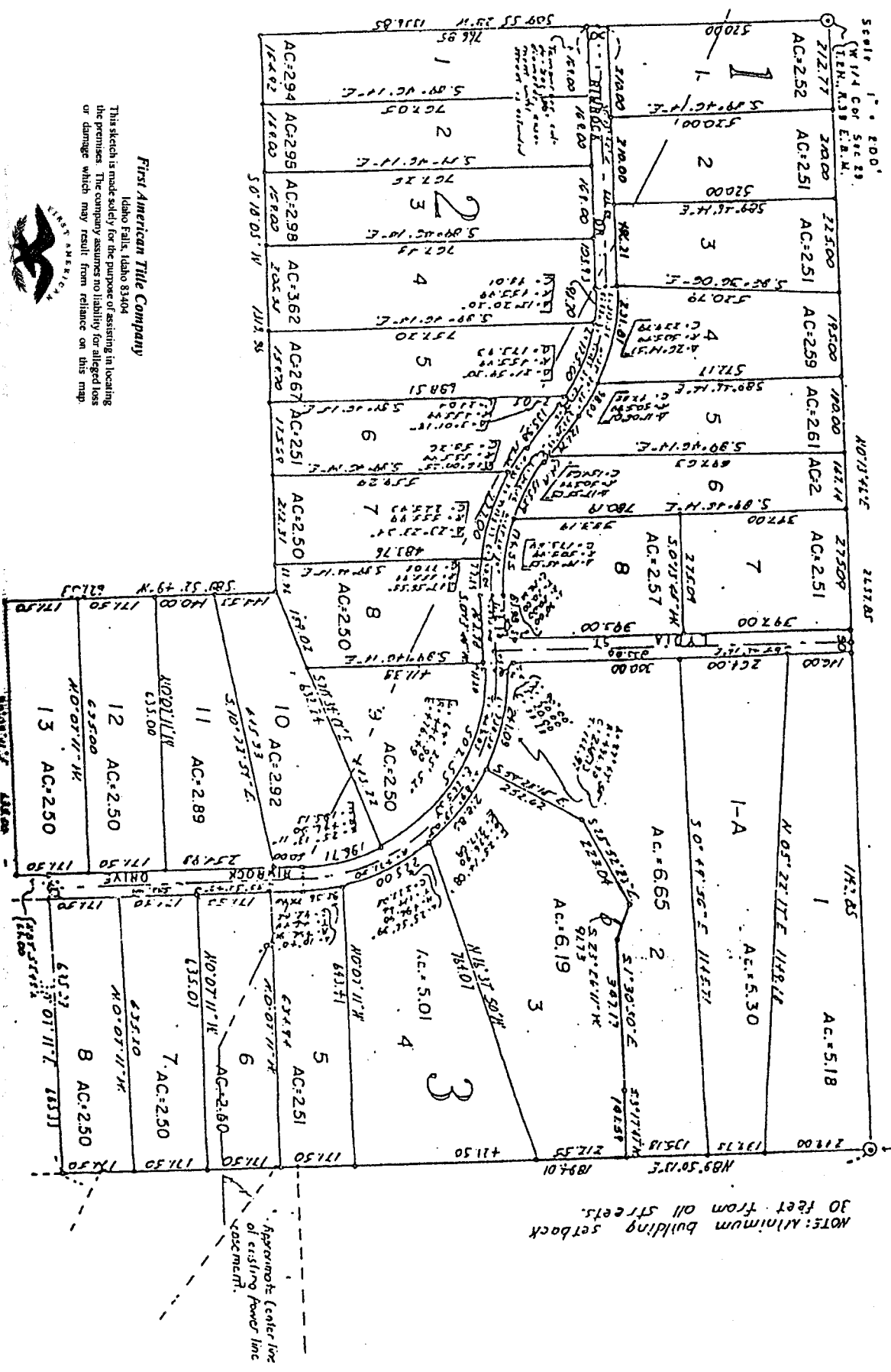


# RIMROCK ACRES SUBDIVISION

## DIVISION NO. 1

BONNEVILLE COUNTY, IDAHO  
Part of NW 1/4 Sec. 29 T2N.R.39 E8M.



This sketch is made solely for the purpose of assisting in locating the premises. The company assumes no liability for alleged loss or damage which may result from reliance on this map.

**First American Title Company**

Idaho Falls, Idaho 83404



NW Cor. Sec. 29  
T2N. R. 39 E. 8M.

NOTE: Minimum building setback  
30 feet from all streets.

Approximate center line  
of existing power line  
indicated.