

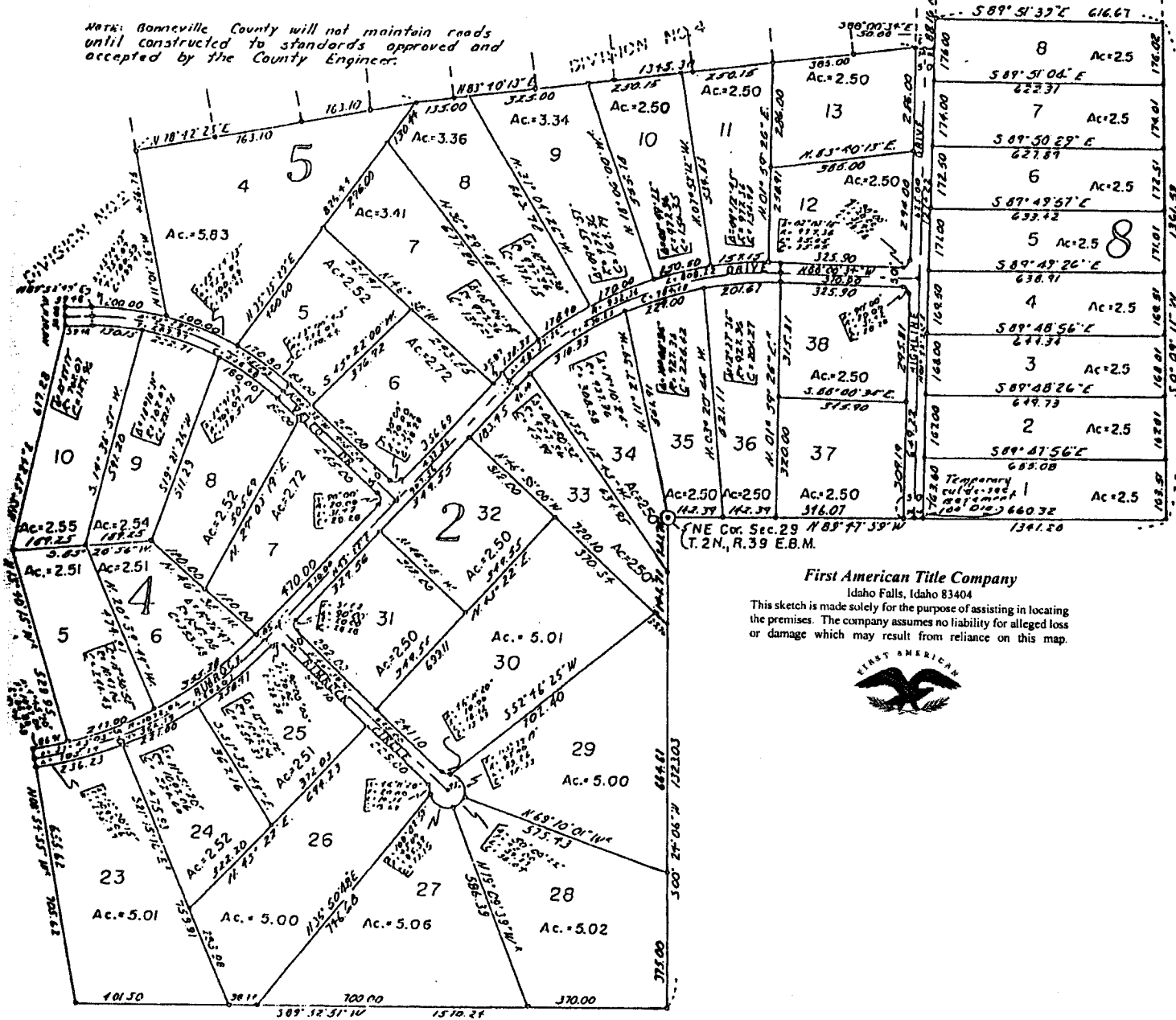
# RIMROCK ACRES SUBDIVISION

## DIV. NO. 3, BONNEVILLE COUNTY, IDAHO

Part of SE 1/4 Sec. 20 Part of SW 1/4 Sec. 21  
Part of NE 1/4 Sec. 29 T.2N., R.39 E.B.M.

NOTE: Bonneville County will not maintain roads until constructed to standards approved and accepted by the County Engineer.

NOTE: Minimum building setback 30 feet from all streets.



**First American Title Company**  
Idaho Falls, Idaho 83404

This sketch is made solely for the purpose of assisting in locating the premises. The company assumes no liability for alleged loss or damage which may result from reliance on this map.

