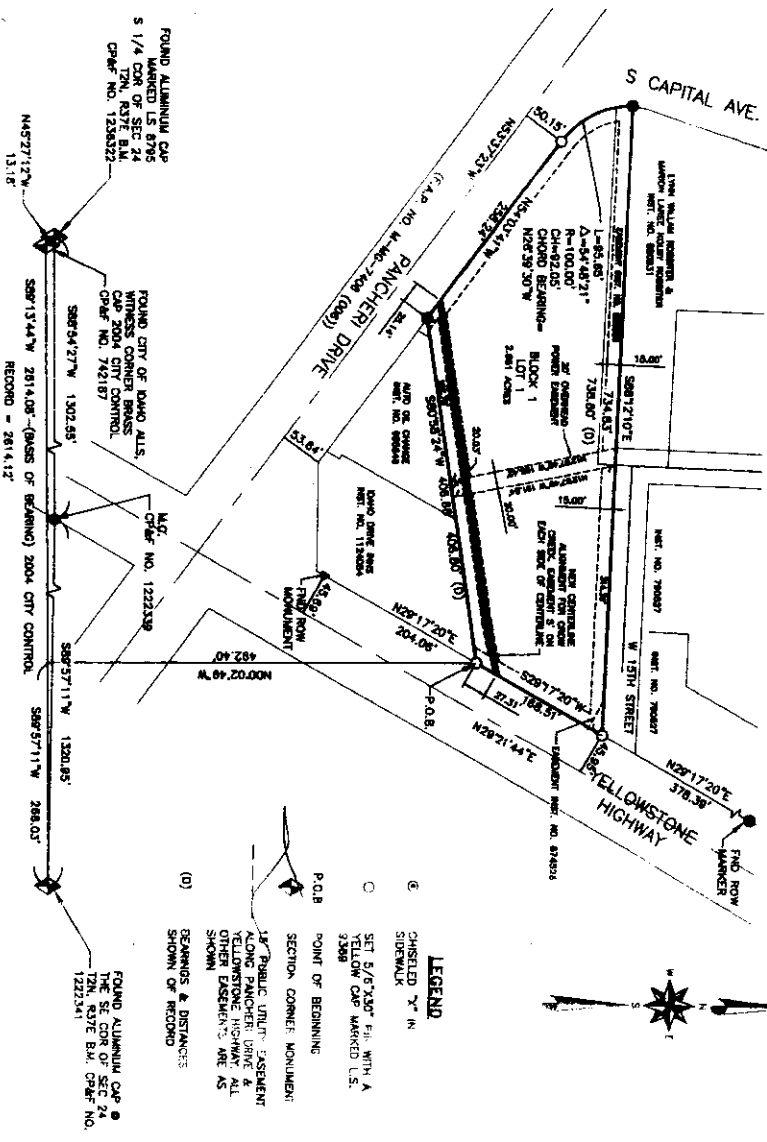


RIVER VIEW PLAZA, DIVISION #1

AN ADDITION TO THE CITY OF IDAHO FALLS, BONNEVILLE COUNTY, IDAHO
PART OF THE SOUTHEAST QUARTER OF THE SOUTHEAST QUARTER OF SECTION 24,
TOWNSHIP 2 NORTH, RANGE 37 EAST OF THE BOISE MERIDIAN, BONNEVILLE COUNTY, IDAHO

First American Title Company
Idaho Falls, ID 83404
While this is a photographic reproduction of the recorded plat, the company assumes no liability for variations, if any, with a re-survey.



FOUND ALUMINUM CAP MARKED L.S. 8795 S 1/4 COR. OF SEC. 24 T2N, R37E B.M. CRP# NO. 1238322

FOUND CITY OF IDAHO ALI.S. WINDY CREEK VILLAGE CAP 2004 CITY CONTROL. CRP# NO. 742187

M.C.T. CRP# NO. 1222339

FOUND ALUMINUM CAP @ THE SE COR. OF SEC. 24 T2N, R37E B.M. CRP# NO. 1222341

- LEGEND**
- ⊙ CHISELED "X" IN SHERALUX SET 5/8"X30" P.V. WITH A YELLOW CAP MARKED U.S. 3388
 - POINT OF BEGINNING SECTION CORNER MONUMENT
 - ⚡ PUBLIC UTILITY EASEMENT ALONG RANCHOERI DRIVE & YELLOWSTONE HIGHWAY. ALL OTHER EASEMENTS ARE AS SHOWN
 - (O) BEARINGS & DISTANCES SHOWN OF RECORD