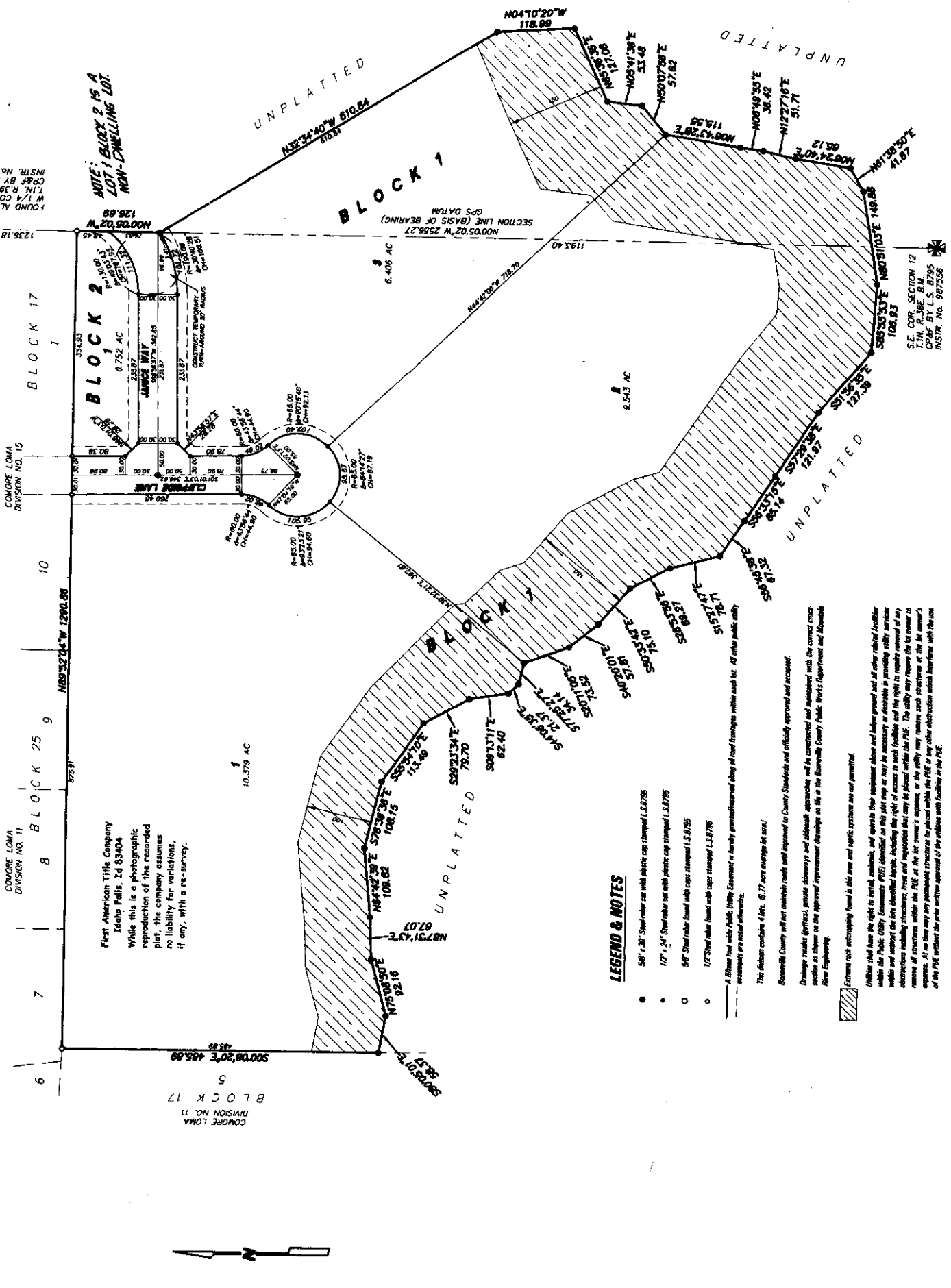


ROCK HOLLOW ACRES

DIVISION NO. 1

BONNEVILLE COUNTY, IDAHO

BEING PART OF THE SOUTHEAST 1/4 OF SECTION 12 T.14N. R.30E. B.M.
AND THE SOUTHWEST 1/4 OF SECTION 7, T.14N. R.30E. B.M.



First American Title Company
Idaho Falls, ID 83404
While this is a photographic
reproduction of the recorded
plat, the company assumes
no liability for variations,
if any, with a re-survey.

- LEGEND & NOTES**
- 5/8" x 30" Steel rebar cap with plastic cap stamped L.S. 8705
 - 1/2" x 24" Steel rebar cap with plastic cap stamped L.S. 8705
 - 5/8" Steel rebar found with caps stamped L.S. 8705
 - 1/2" Steel rebar found with caps stamped L.S. 8705

A Right of Way with Public Utility Easement is hereby permitted along of road frontages within each lot. All other public utility easements are noted elsewhere.

This Division contains 4 lots, 6.77 acre average lot size.

Bonneville County will not maintain roads until approved to County Standards and officially approved and accepted.

Damage to trees (direct, indirect, private) and sidewalk approaches will be constructed and maintained with the correct cross-section as shown on the approved improvement drawings on file in the Bonneville County Public Works Department and Assistant City Engineer.

Extreme rock outcroppings found in this area and septic systems are not permitted.

Utilities shall have the right to install, maintain, and operate their equipment above and below ground and all other related facilities within the Public Utility Easements (PUE) identified on this plat map as may be necessary or desirable in providing utility services within and without the lots identified herein, including the right of access to such facilities and the right to require the removal of any obstructions including structures, trees and vegetation that may be placed within the PUE. The utility may require the lot owner to remove all structures within the PUE at the lot owner's expense, or the utility may remove such structures at the lot owner's expense. All structures may be permanent structures be placed within the PUE or any other obstruction which interferes with the use of the PUE without the prior written approval of the utility with facilities to the PUE.

T.14N. R.30E. B.M. 83.91
CORN. BY L.S. 827
INSTR. No. 538694

FOUND ALUMINUM CAP
T.14N. R.30E. B.M.
CORN. BY L.S. 827
INSTR. No. 46645

NOTE: BLOCK 2 IS A
NON-DWELLING LOT.

S.E. COR. SECTION 12
CORN. BY L.S. 805
INSTR. No. 397556