

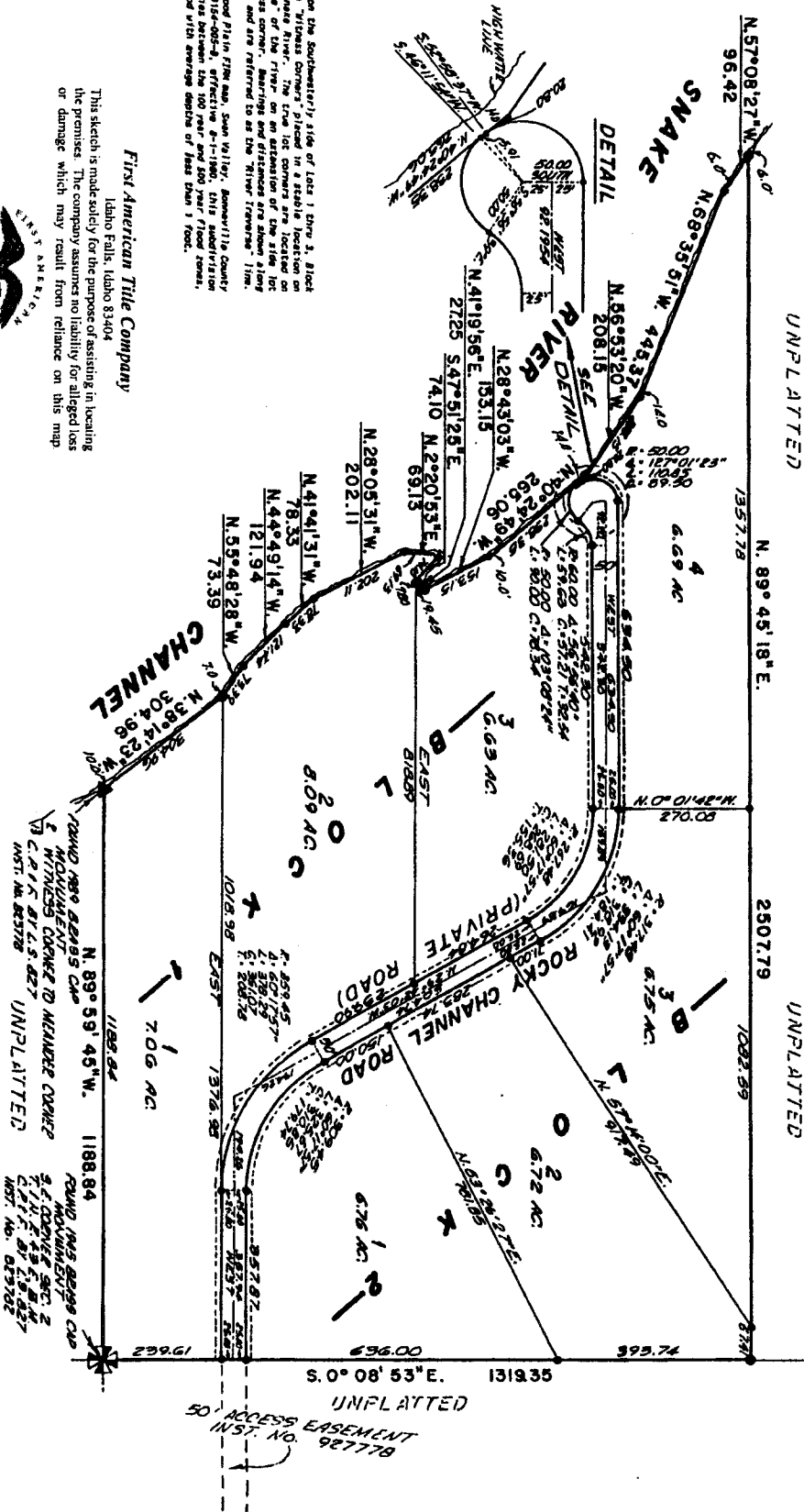
ROCKY CHANNEL RANCH

DIVISION NO. 1

CITY OF SWAN VALLEY, BONNEVILLE COUNTY, IDAHO

LYING IN LOTS 7 AND 8, SECTION 2, T. 1 N., R. 43 E., B.M.

- LEGEND**
- Double 5/8" x 7/32" steel re-bar set with plastic cap stamped L.S. 1827
 - Double 1/2" x 3/4" steel re-bar set with plastic cap stamped L.S. 1827
 - A few foot wide utility and drilling easement is hereby granted along all road frontage through each lot.



NOTES

The steel re-bar shown on the southeasterly side of Lots 1 thru 3, Block 1 and Lot 4, Block 2 are "Witness Corners" placed in a steel location on the right bank of the Snake River. The true lot corners are located on the main right retaining wall of the river on an extension of the side along the main right retaining wall. The witness corners are shown along the Snake River. The witness corners shown are referred to as the "Witness Corners" and are referred to as the "Witness Corners".

According to the FEMA Flood Plain File map, Swan Valley, Bonneville County Community Form No. 180154-001-A, effective 6-1-1980, this subdivision is subject to 100 year flood 15ft average depth of less than 1 foot.

This sketch is made solely for the purpose of assisting in locating the premises. The company assumes no liability for alleged loss or damage which may result from reliance on this map.

First American Title Company

Idaho Falls, Idaho 83404



FOUND 1945 BRASS CAP MONUMENT
E 1/4 CORNER SEC. 2
T. 1 N. R. 43 E., B.M.
C.P.M. BY L.S. 827
INVT. NO. 823777

50' ACCESS EASEMENT
INST. NO. 927779