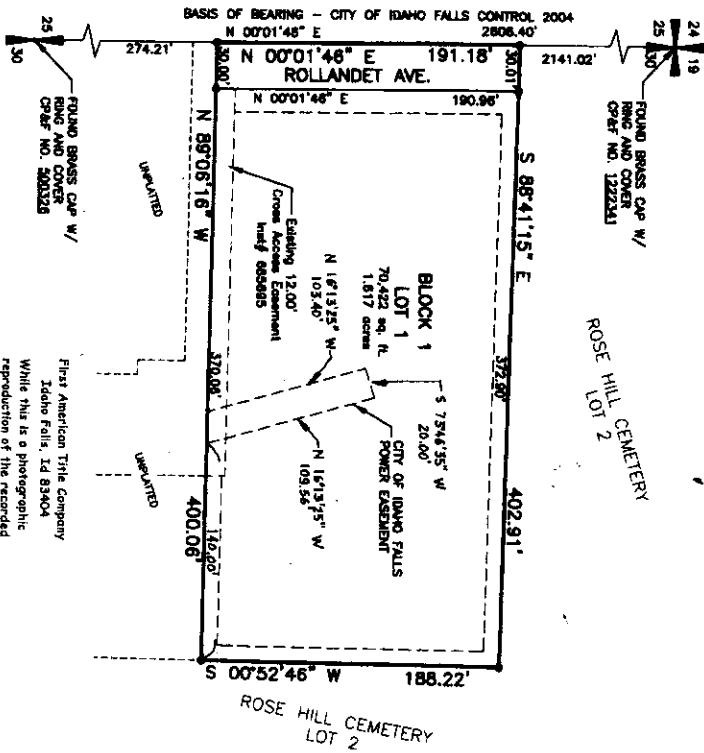


ROLLANDET PLACE
 DIVISION NO. 1
 AN ADDITION TO THE CITY OF IDAHO FALLS
 BEING A PORTION OF THE NW 1/4 OF SECTION 30, T.2N., R.38., B.M. IDAHO
 FALLS, BONNEVILLE COUNTY, IDAHO



LEGEND

Section control corners
 Set 5/8"x30" iron rod with
 pocket-cap marked P.L.S. 10786
 Set 1/2"x30" iron rod with
 pocket-cap marked P.L.S. 10786
 Proposed Utility Easements

1. UNLESS OTHERWISE SHOWN, A FIFTEEN (15) FOOT
 WIDE PUBLIC UTILITY EASEMENT IS HEREBY RESERVED
 ALONG ALL ROAD FRONTAGES AND AN EIGHT (8) FOOT
 PUBLIC UTILITIES OVER THE TEN (10) FEET ALONG THE
 REAR AND SIDE YARDS. THIS EASEMENT SHALL NOT
 PRECLUDE THE CONSTRUCTION OF HARD-SURFACED
 DRIVEWAYS AND WALKWAYS TO EACH LOT.



First American Title Company
 Idaho Falls, ID 83404
 While this is a photographic
 reproduction of the recorded
 plat, the company assumes
 no liability for variations,
 if any, with a re-survey.