

# ROSE NIELSEN BUSINESS PARK DIVISION NO. 1

AN ADDITION TO THE CITY OF IDAHO FALLS, BONNEVILLE COUNTY, IDAHO

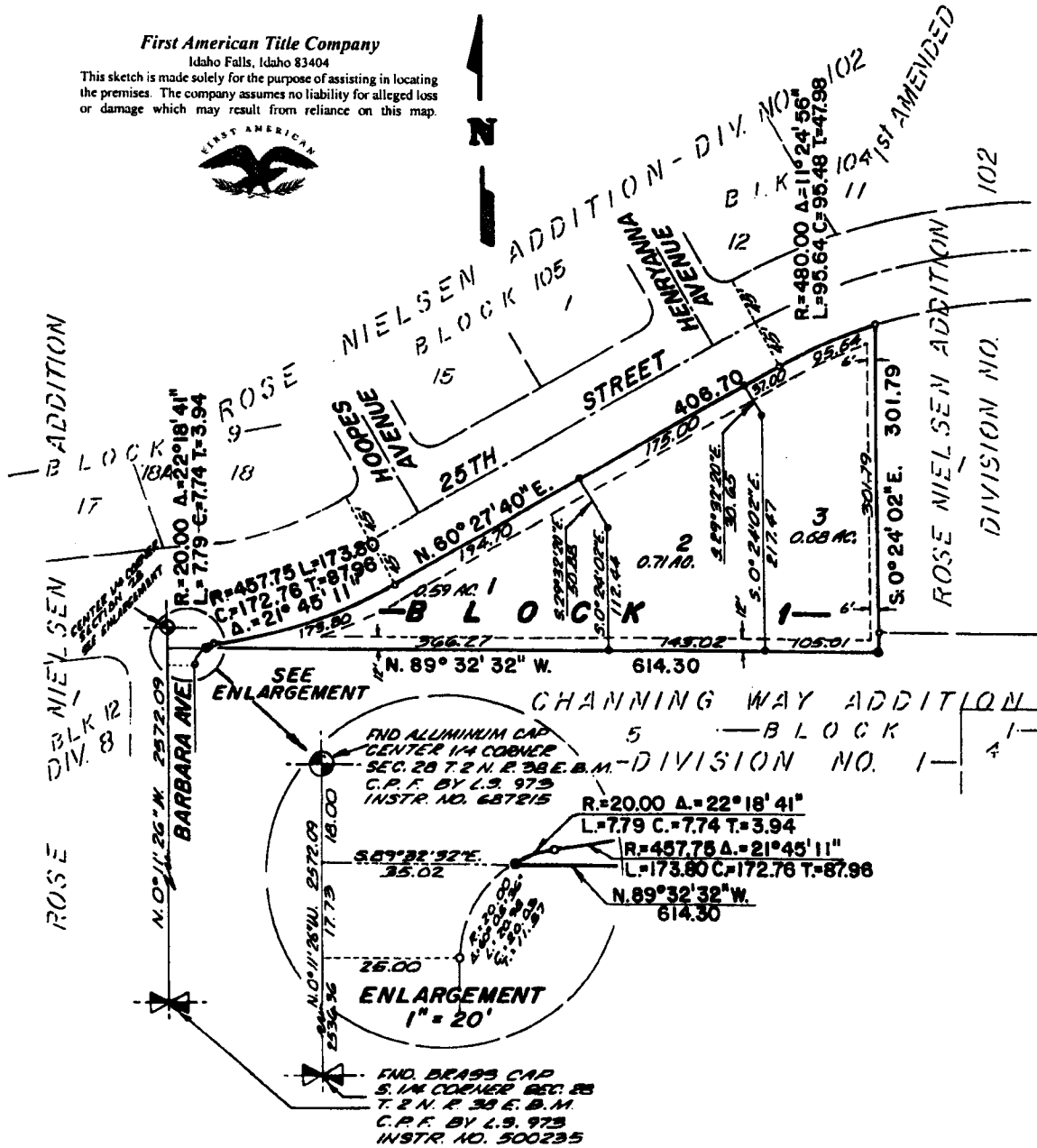
BEING A REPLAT OF LOT 2 BLOCK 108 ROSE NIELSEN ADDITION, DIVISION NO. 102  
AND PART OF LOT 5, BLOCK 1, CHANNING WAY ADDITION, DIVISION NO. 1

IN THE EAST 1/2 OF SECTION 28, T. 2 N., R. 38 E., B. M.

First American Title Company

Idaho Falls, Idaho 83404

This sketch is made solely for the purpose of assisting in locating the premises. The company assumes no liability for alleged loss or damage which may result from reliance on this map.



### LEGEND & NOTES

- 5/8" x 30" Steel Re-bar set with plastic cap stamped L.S. 8795
- 1/2" x 24" Steel Re-bar set with plastic cap stamped L.S. 8796
- 1/2" Steel Re-bar found with caps stamped P.E.A.S. 722 unless shown otherwise

--- A fifteen foot wide Utility Easement is hereby granted along all road frontages within each lot. All other easements are ten feet wide unless otherwise noted.