

ROSE NIELSEN BUSINESS PARK DIVISION NO. 1

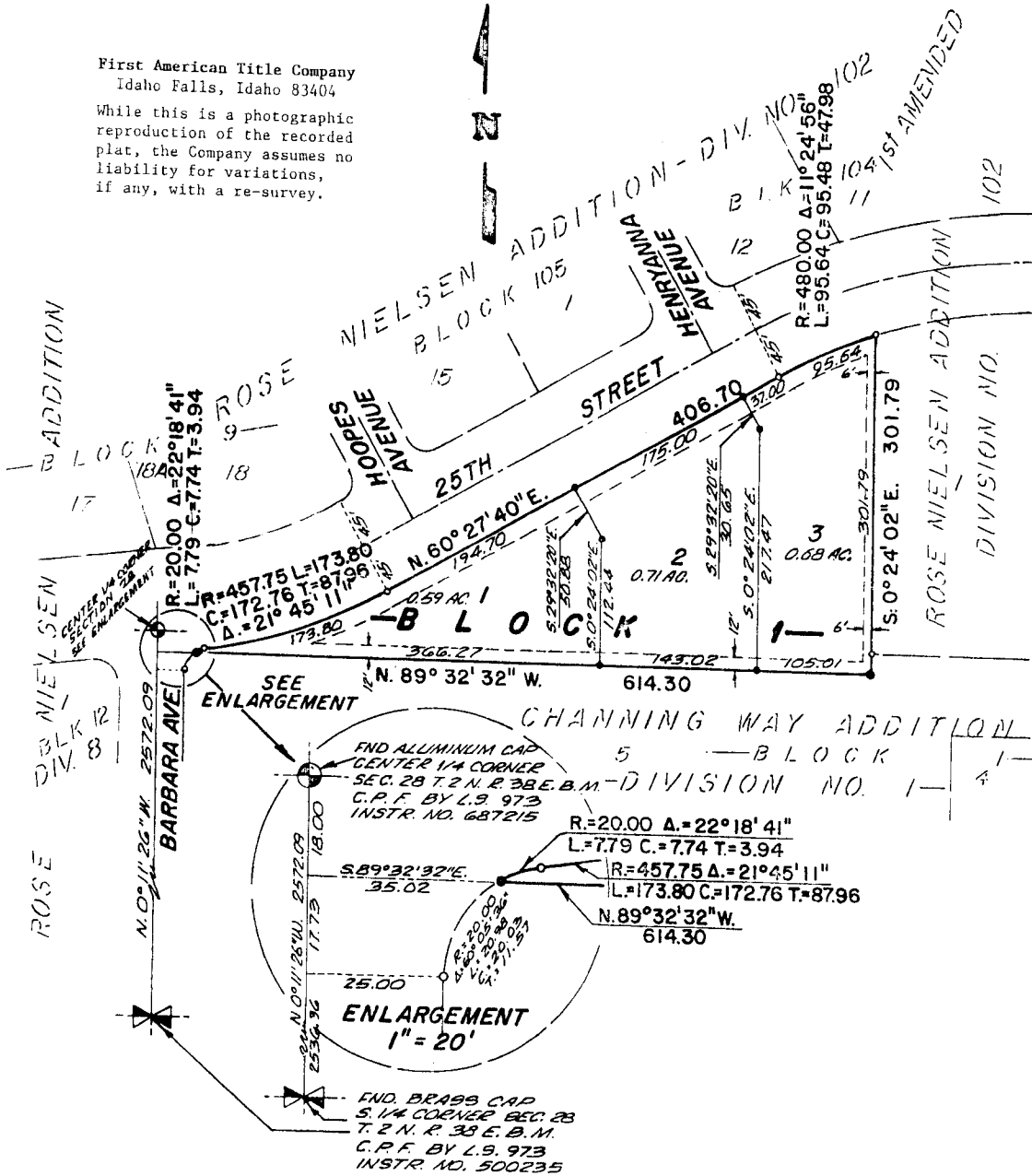
AN ADDITION TO THE CITY OF IDAHO FALLS, BONNEVILLE COUNTY, IDAHO

BEING A REPLAT OF LOT 2 BLOCK 108 ROSE NIELSEN ADDITION, DIVISION NO. 102
AND PART OF LOT 5, BLOCK 1, CHANNING WAY ADDITION, DIVISION NO. 1

IN THE EAST 1/2 OF SECTION 28, T. 2 N., R. 38 E., B. M.

First American Title Company
Idaho Falls, Idaho 83404

While this is a photographic reproduction of the recorded plat, the Company assumes no liability for variations, if any, with a re-survey.



LEGEND & NOTES

- 5/8" x 30" Steel Re-bar set with plastic cap stamped L.S.8795
- 1/2" x 24" Steel Re-bar set with plastic cap stamped L.S.8795
- 1/2" Steel Re-bar found with caps stamped P.E./L.S.722 unless shown otherwise

A fifteen foot wide Utility Easement is hereby granted along all road frontages within each lot. All other easements are ten feet wide unless otherwise noted.