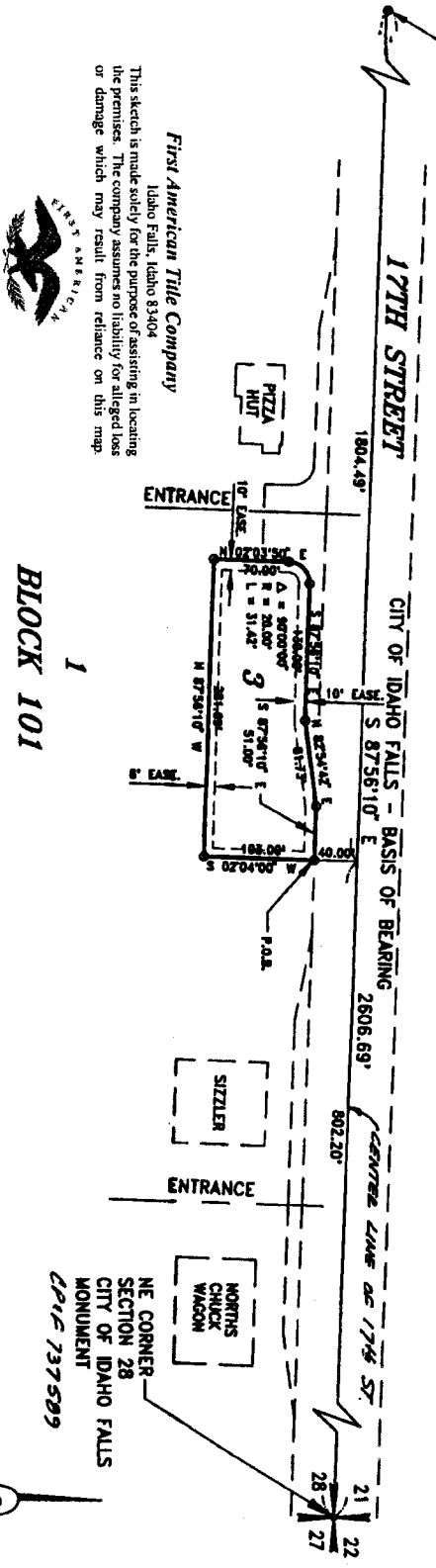


# SECOND AMENDED PLAT OF ROSE NIELSEN ADDITION

## DIVISION NO. 101

BEING A REPLAT OF  
PART OF LOT 1, BLOCK 101  
AN ADDITION TO THE CITY OF IDAHO FALLS, BONNEVILLE COUNTY, IDAHO  
PART OF THE NE 1/4, SECTION 28, T.2 N., R. 38 E., B.M.

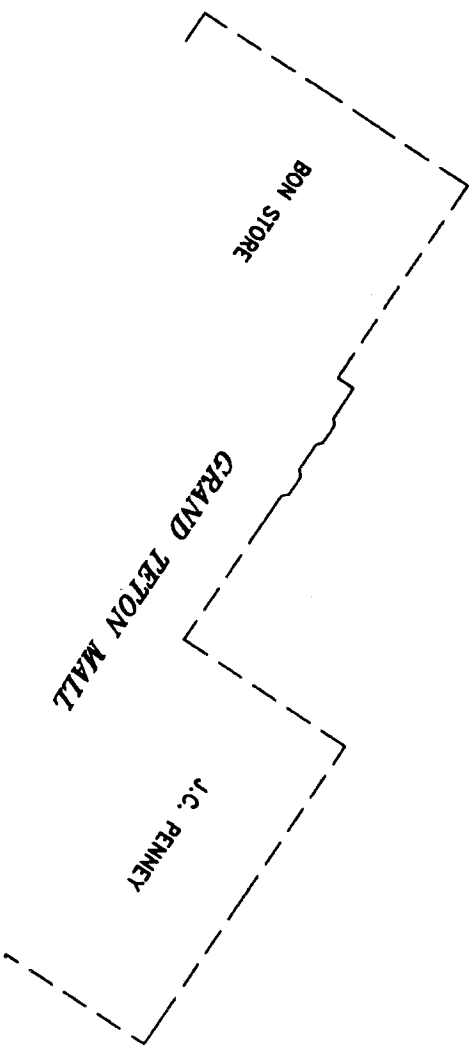
WITNESS CORNER TO  
THE N 1/4 COR. SECTION 28  
CITY OF IDAHO FALLS  
MONUMENT  
C.P.I.C. 500410



**First American Tile Company**  
Idaho Falls, Idaho 83404  
This sketch is made solely for the purpose of assisting in locating the premises. The company assumes no liability for allged loss or damage which may result from reliance on this map.



**BLOCK 101**



**LEGEND**

- Section control corners
- Placed 1/2" from rd with cap marked P.L.S. 4563
- Utility easements are 10' wide along the frontage of all lots.
- Side yard and rear yard easements are 8' unless otherwise shown.
- Monument to be placed after construction.

