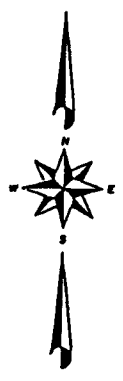


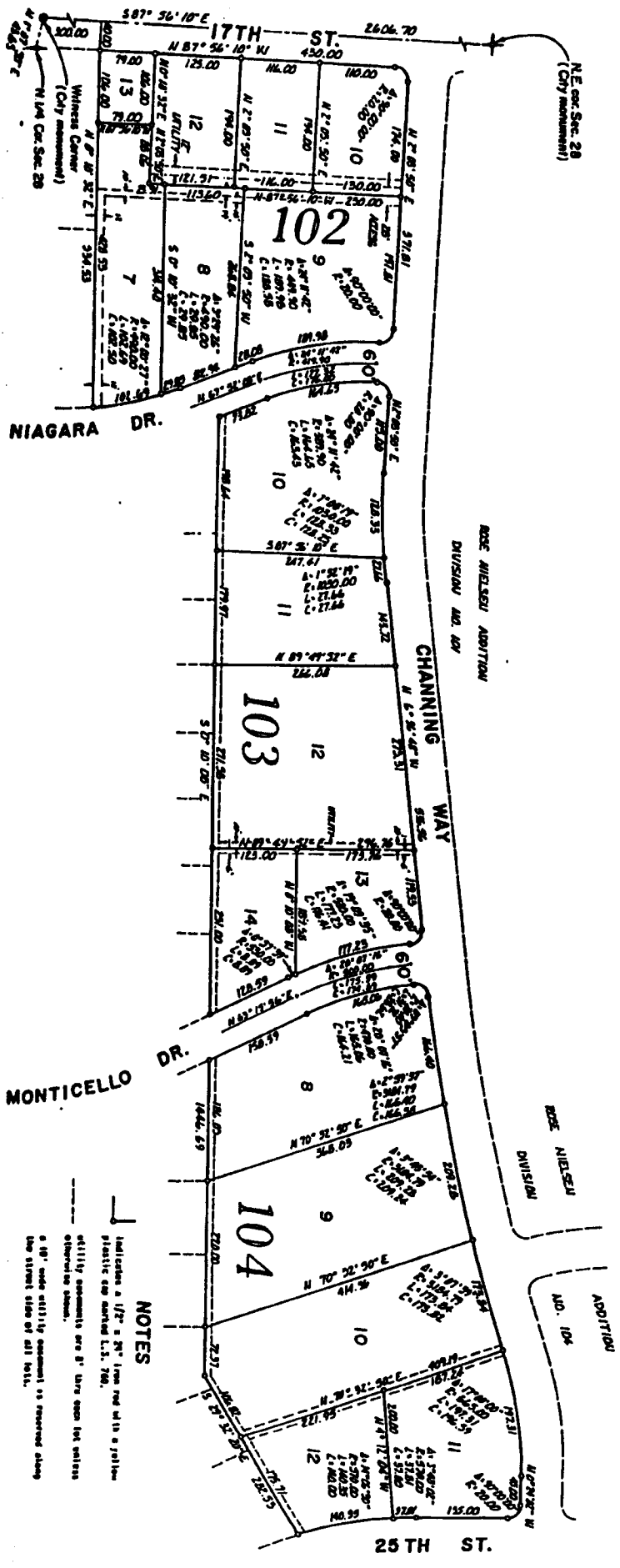
THE FIRST AMENDED PLAT OF LOT 1, BLOCK 102, LOT 1, BLOCK 103 & LOT 1, BLOCK 104 ROSE NIELSEN ADDITION DIVISION NO. 102

TO THE CITY OF IDAHO FALLS, IDAHO
 PART OF THE N.E. 1/4 OF SECTION 28, T. 2N., R. 38 E.B.M.



First American Title Company
 Idaho Falls, Idaho 83404

This sketch is made solely for the purpose of assisting in locating the premises. The company assumes no liability for alleged loss or damage which may result from reliance on this map.



NOTES

Indicates a 1/2" x 2" line and the site is a portion
 plastic card marked L.S. 789.
 Utility easements are 8' thru open lot unless
 otherwise shown.
 6" 10" wide utility easement is reserved along
 the street side of all lots.