

# THE SECOND AMENDED PLAT OF ROSE NIELSEN ADDITION DIVISION NO. 102 TO THE CITY OF IDAHO FALLS, IDAHO INCLUDING PART OF BLOCK 9 AND BLOCK 105

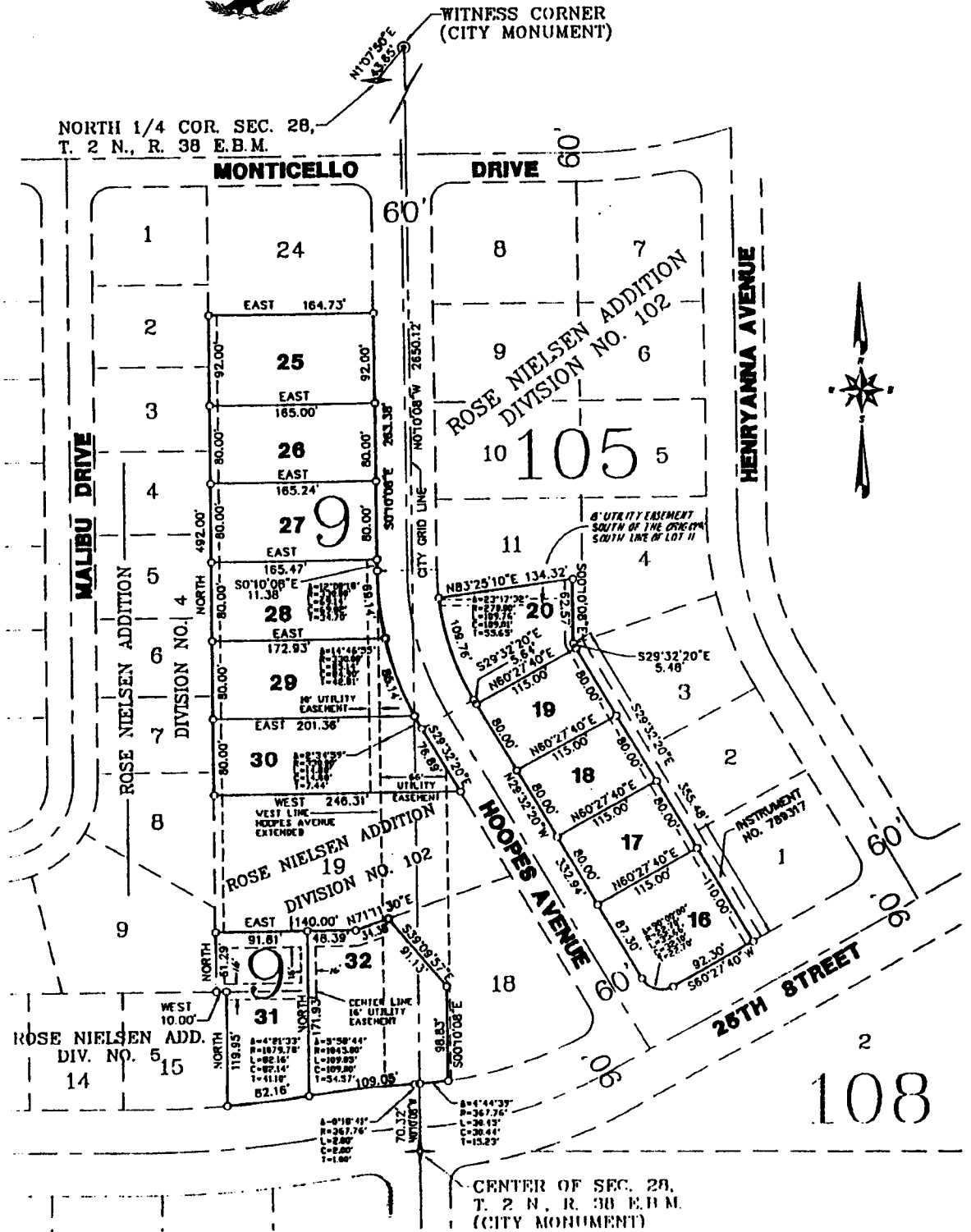
First American Title Company  
Idaho Falls, Idaho 83404

This sketch is made solely for the purpose of assisting in locating the premises. The company assumes no liability for alleged loss or damage which may result from reliance on this map.



WITNESS CORNER  
(CITY MONUMENT)

NORTH 1/4 COR. SEC. 28,  
T. 2 N., R. 38 E.B.M.



### NOTES

- indicates a 1/2" x 24" iron rod placed with a yellow plastic cap marked L.S. 750.
- utility easements are 8' thru each lot unless otherwise shown.
- a 10' wide utility easement is reserved along the street side of all lots.

APPLIC. 2-2-51 - D. V. ADDED EASEMENTS

CENTER OF SEC. 28,  
T. 2 N., R. 38 E.B.M.  
(CITY MONUMENT)