

ROSE NIELSEN ADDITION

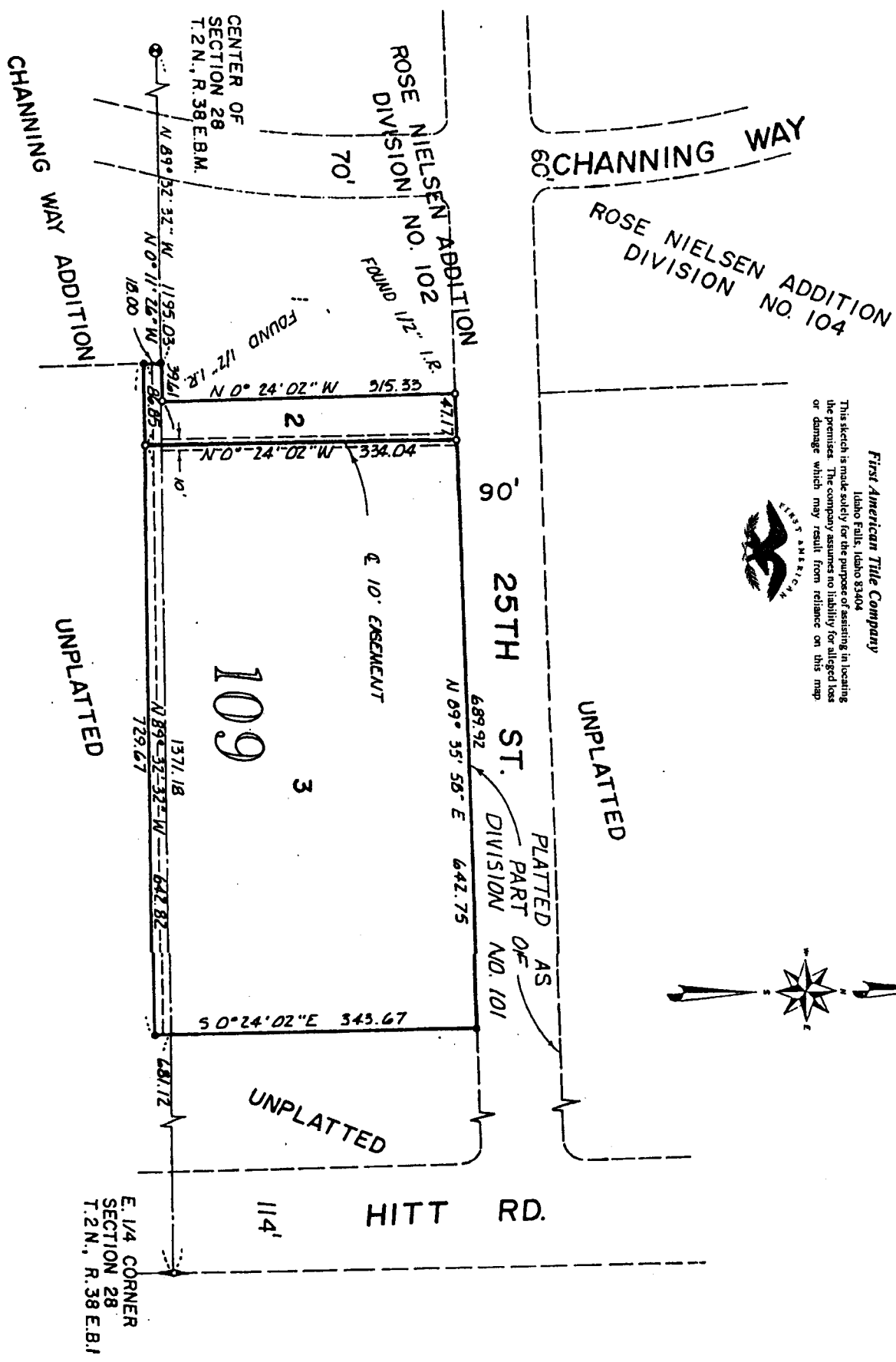
DIVISION NO. 103

TO THE CITY OF IDAHO FALLS, IDAHO
 PART OF THE N.E. 1/4 OF SECTION 28, T.2N., R.38E.

First American Tile Company

Idaho Falls, Idaho 83404

This sketch is made solely for the purpose of assisting in locating the premises. The company assumes no liability for alleged loss or damage which may result from reliance on this map.



UNPLATTED

UNPLATTED

UNPLATTED