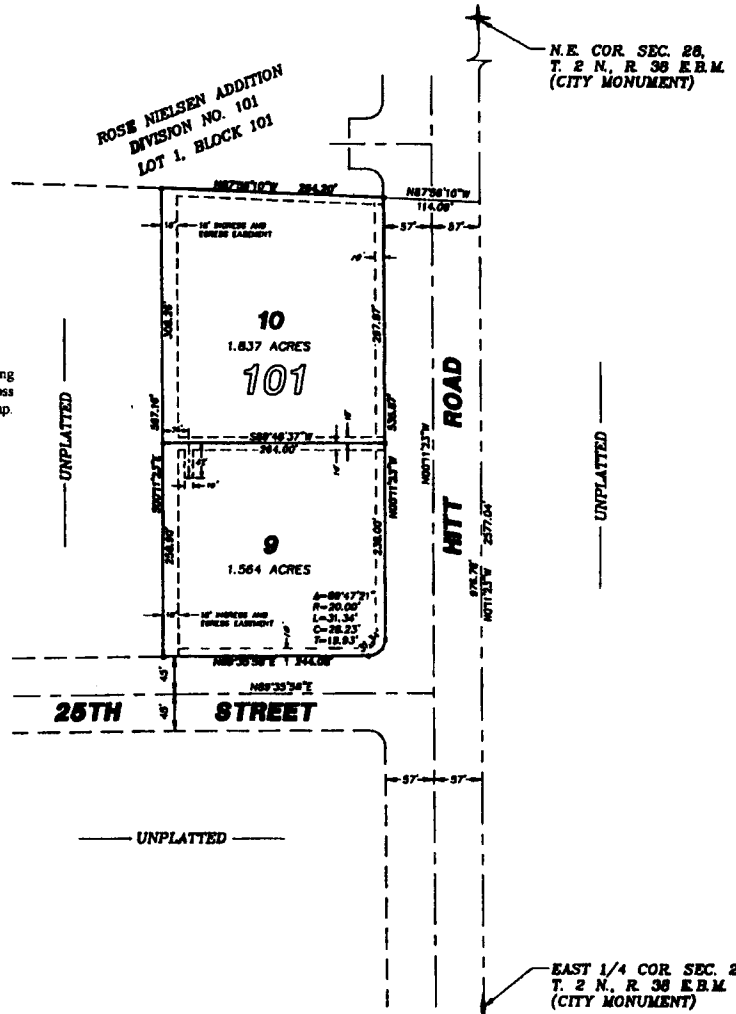


ROSE NIELSEN ADDITION

DIVISION NO. 108

CITY OF IDAHO FALLS, IDAHO

PART OF THE S.E. 1/4 OF THE N.E. 1/4 OF SECTION 28, T. 2 N., R. 38 E.B.M.



First American Title Company

Idaho Falls, Idaho 83404

This sketch is made solely for the purpose of assisting in locating the premises. The company assumes no liability for alleged loss or damage which may result from reliance on this map.



NOTES

Indicates a 1/2" x 24" iron rod placed with a yellow plastic cap marked L.S. 760.

utility easements are 8' through each lot unless otherwise shown.

a 10' wide utility easement is reserved along the street side of all lots.

N.E. COR. SEC. 28,
T. 2 N., R. 38 E.B.M.
(CITY MONUMENT)

EAST 1/4 COR. SEC. 28,
T. 2 N., R. 38 E.B.M.
(CITY MONUMENT)