

ROSE NIELSEN ADDITION

DIVISION NO. II

TO THE CITY OF IDAHO FALLS, IDAHO
Part of the S.W. 1/4 of Section 28, T.2N., R.38 E.B.M.

NOTES:

┌ designates 1/2" x 24" iron rod.

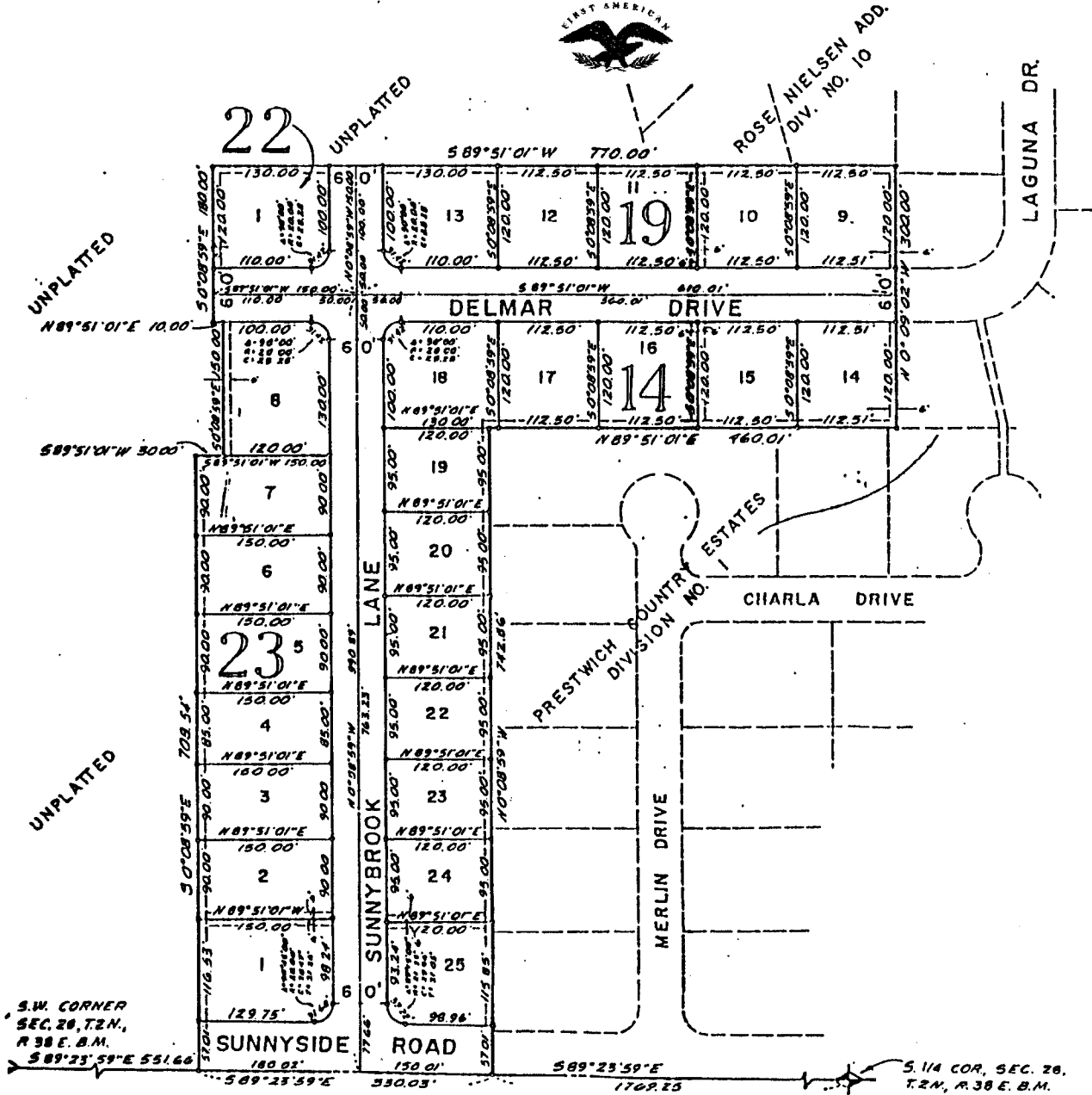
--- utility easements are 8' thru each lot unless otherwise shown.

A 10' wide utility easement is reserved along the street frontage of all lots.

First American Title Company

Idaho Falls, Idaho 83404

This sketch is made solely for the purpose of assisting in locating the premises. The company assumes no liability for alleged loss or damage which may result from reliance on this map.



S.W. CORNER
SEC. 28, T.2N.,
R.38 E. B.M.

S. 1/4 COR., SEC. 28,
T.2N., R.38 E. B.M.