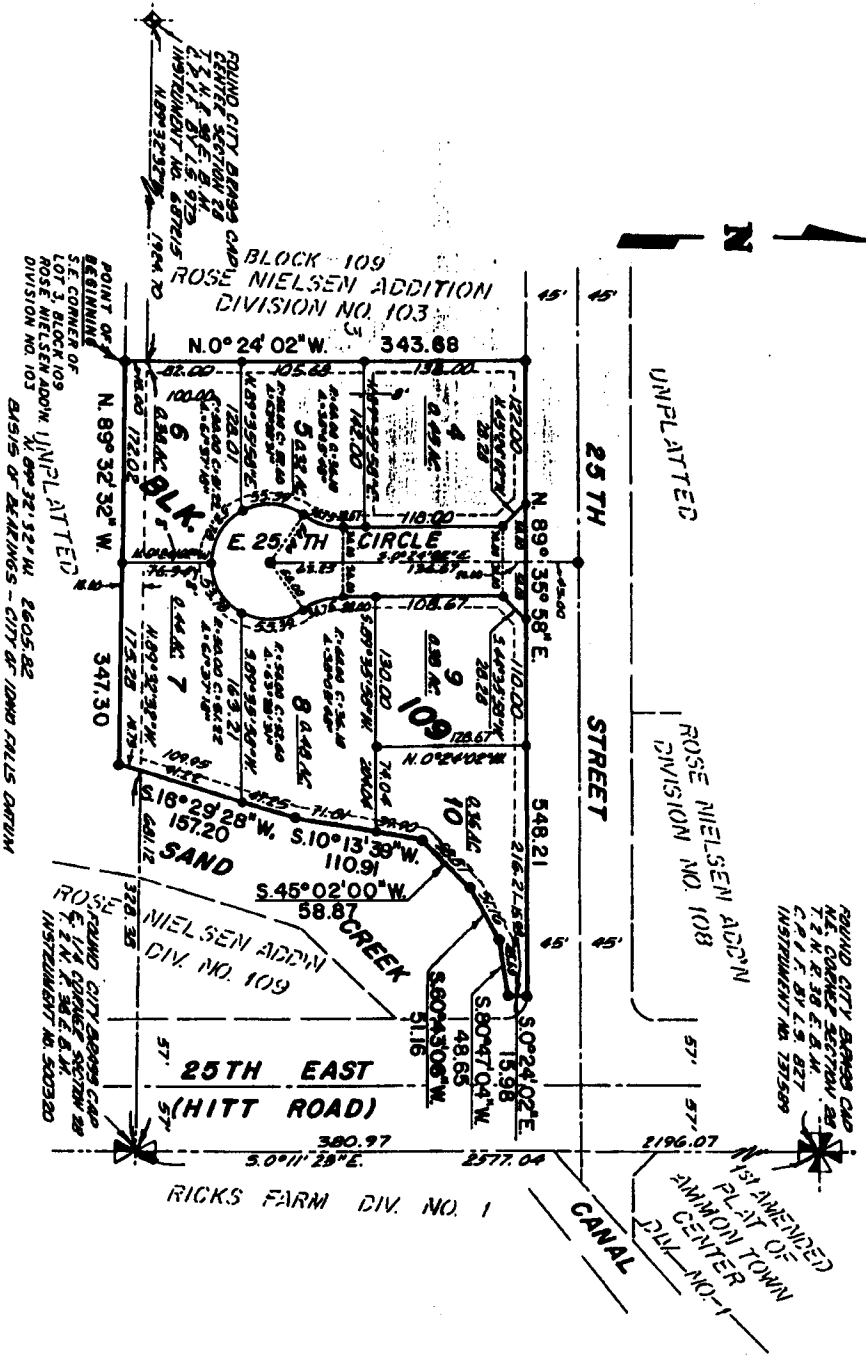


ROSE NIELSEN ADDITION DIVISION NO. 110

TO THE CITY OF IDAHO FALLS, BONNEVILLE COUNTY, IDAHO
BEING PART OF THE EAST 1/2 OF SECTION 28, T. 2 N., R. 38 E., B. M.



This sketch is made solely for the purpose of assisting in locating the premises. The company assumes no liability for allged loss or damage which may result from reliance on this map.

First American Title Company

Idaho Falls, Idaho 83404



LEGEND & NOTES

- 5/8" x 3/8" Steel Pin - set with plastic cap stamped L.S.R.27
- 1/2" x 24" Steel Pin - set with plastic cap stamped L.S.R.27

A First class utility liability insurance is hereby granted along all road frontages within each lot.
All other assumptions are for first title unless otherwise noted.