

ROSE NIELSEN ADDITION

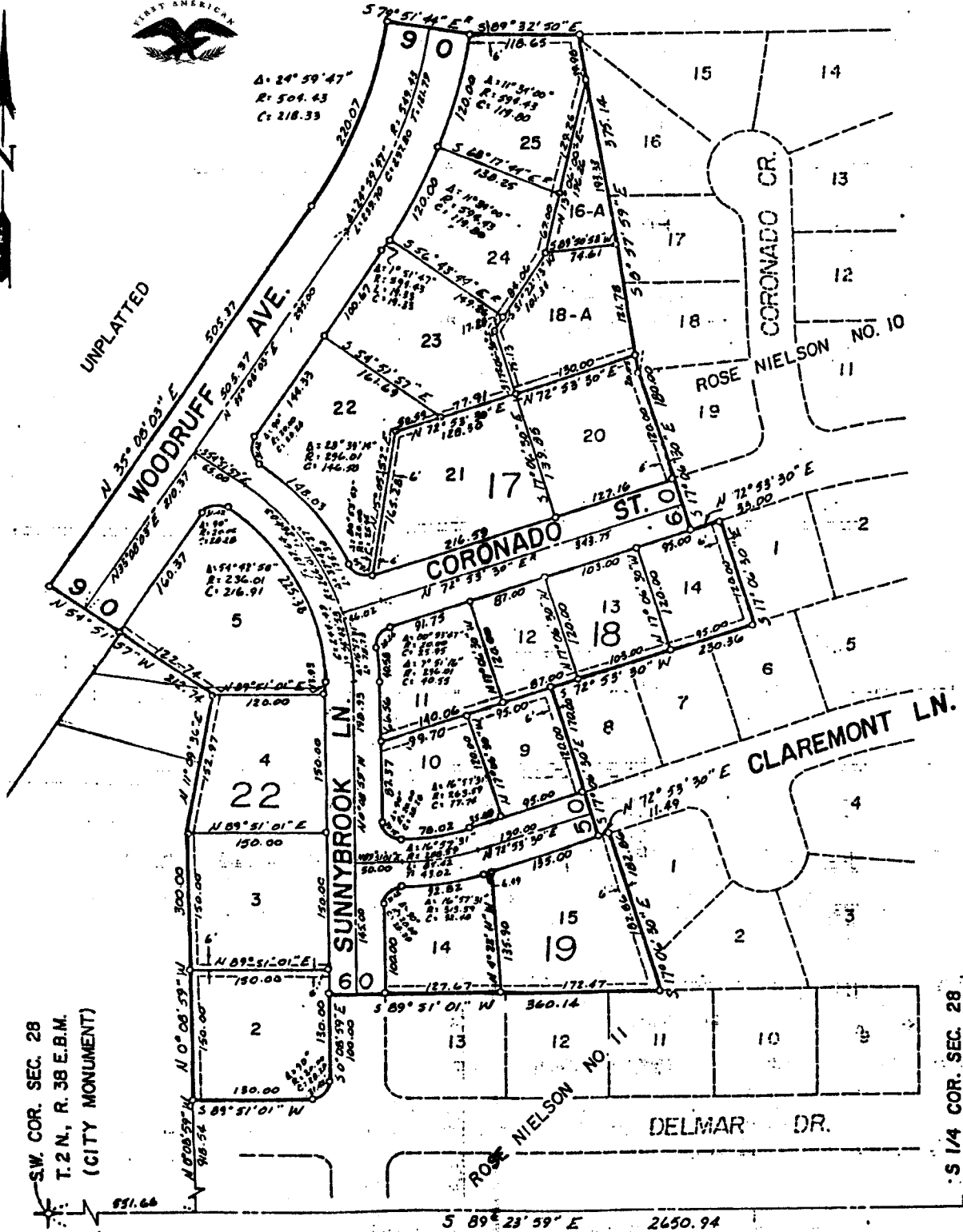
DIVISION NO. 12

INCLUDING THE 1st AMENDED PLAT OF LOT 1, BLOCK 22, DIVISION NO. 11
TO THE CITY OF IDAHO FALLS, IDAHO
PART OF THE S.W. 1/4 OF SEC. 28, T. 2 N., R. 38 E.B.M.

First American Title Company

Idaho Falls, Idaho 83404

This sketch is made solely for the purpose of assisting in locating the premises. The company assumes no liability for alleged loss or damage which may result from reliance on this map.



S.W. COR. SEC. 28
T. 2 N., R. 38 E.B.M.
(CITY MONUMENT)

S 1/4 COR. SEC. 28
T. 2 N., R. 38 E.B.M.
(CITY MONUMENT)