

ROSE NIELSEN ADDITION

DIVISION NO. 9

TO THE CITY OF IDAHO FALLS, IDAHO
PART OF
THE NE 1/4 OF THE SW 1/4 SEC. 28 T2N
R. 38 E.B.M.

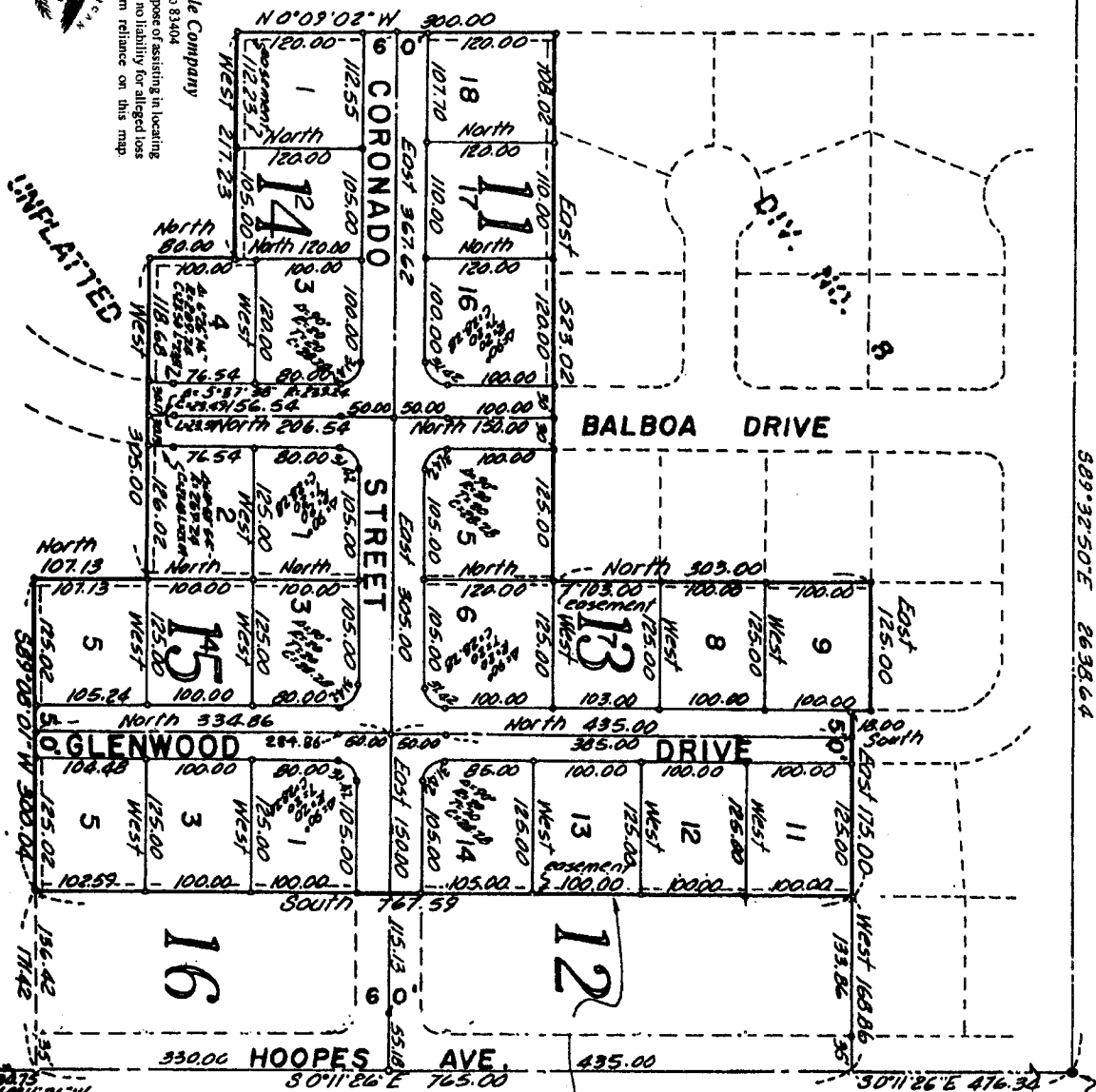
West 1/4 Corner Sec. 28
T2N., R. 38 E.B.M.

UNPLATTED

This sketch is made solely for the purpose of assisting in locating the premises. The company assumes no liability for alleged loss or damage which may result from reliance on this map.

First American Title Company

Idaho Falls, Idaho 83404



UNPLATTED

UNPLATTED

NE Corner of the SW 1/4
Section 28, T. 2 N.
R. 38 E. B. M.

South 1/4 Corner
Sec. 28, T. 2 N.,
R. 38 E. B. M.