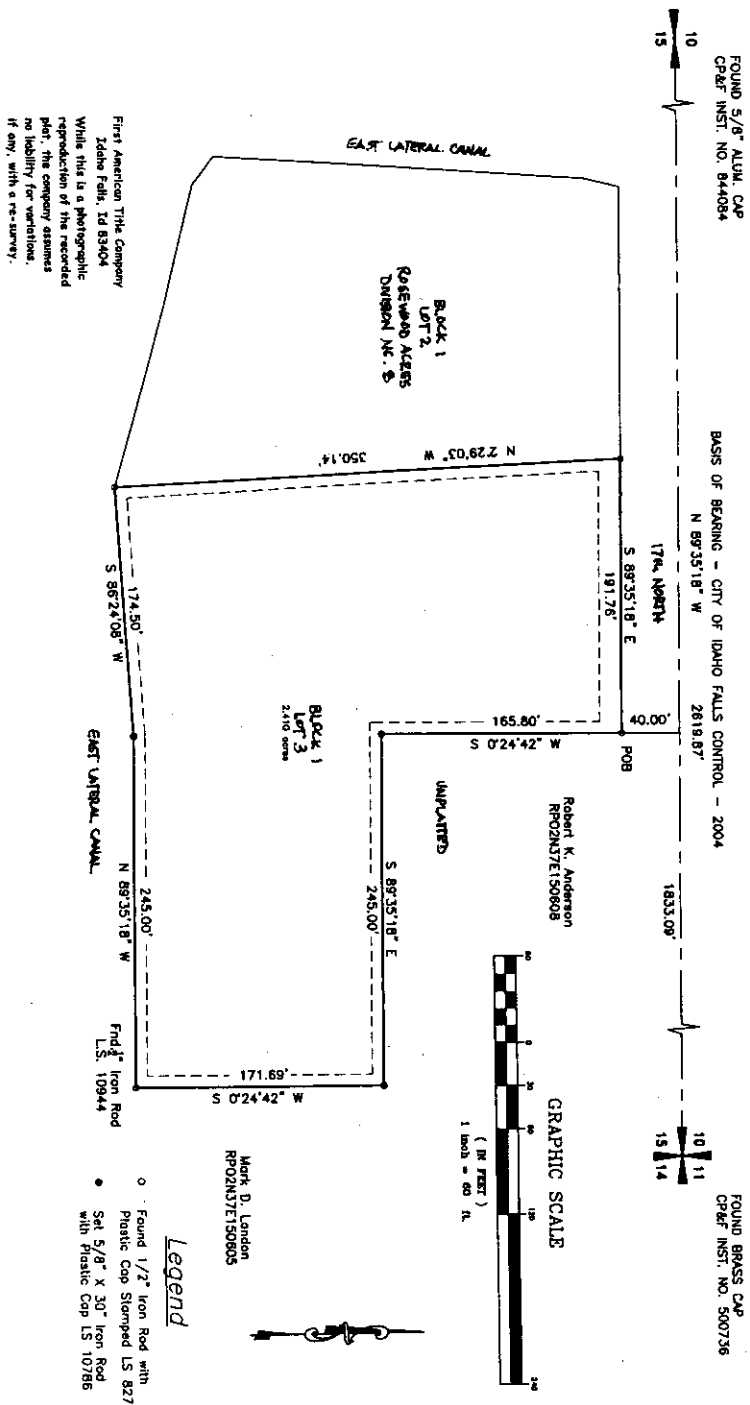


**1st AMENDED**  
**ROSEWOOD ACRES DIVISION NO. 8**  
 BEING A REPLAT OF LOT 1 BLOCK 1 OF ROSEWOOD ACRES DIVISION NO. 8  
 AND PART OF THE NW 1/4 NE 1/4 OF SECTION 15  
 T. 2 N., R. 37E., B.M.  
 BONNEVILLE COUNTY, IDAHO



- NOTES:**
- UNLESS OTHERWISE NOTED, ALL LOTS ARE HEREBY DESIGNATED AS HAVING A PERMANENT EASEMENT FOR PUBLIC UTILITIES ACCESS OVER THE FIFTEEN (15) FEET ADJACENT TO ANY ACCESS OVER THE STREET AND AN EASEMENT FOR PUBLIC UTILITIES OVER THE EIGHT (8) FEET ALONG ANY SUBDIVISION BOUNDARY AS SHOWN. THIS DESIGNATION SHALL NOT PRECLUDE THE CONSTRUCTION OF HAND-SURFACED DRIVEWAYS AND WALKWAYS TO EACH LOT.
  - BUILDING SETBACKS AND DIMENSIONAL STANDARDS IN THIS SUBDIVISION SHALL BE IN COMPLIANCE WITH THE APPLICABLE ZONING REGULATIONS OF BONNEVILLE COUNTY.
  - DRAINAGE SWALES, PRIVATE DRIVEWAYS AND SIDEWALKS SHALL BE CONSTRUCTED AND MAINTAINED WITH THE CORRECT CROSS-SECTION AS SHOWN ON THE APPROVED IMPROVEMENT DRAWINGS ON THE FILE IN THE BONNEVILLE COUNTY PUBLIC WORKS DEPARTMENT.