

THE FIRST AMENDED PLAT

of
LOT 1, BLOCK 1 and LOT 1, BLOCK 2

ROSEWOOD ACCRES SUBDIVISION

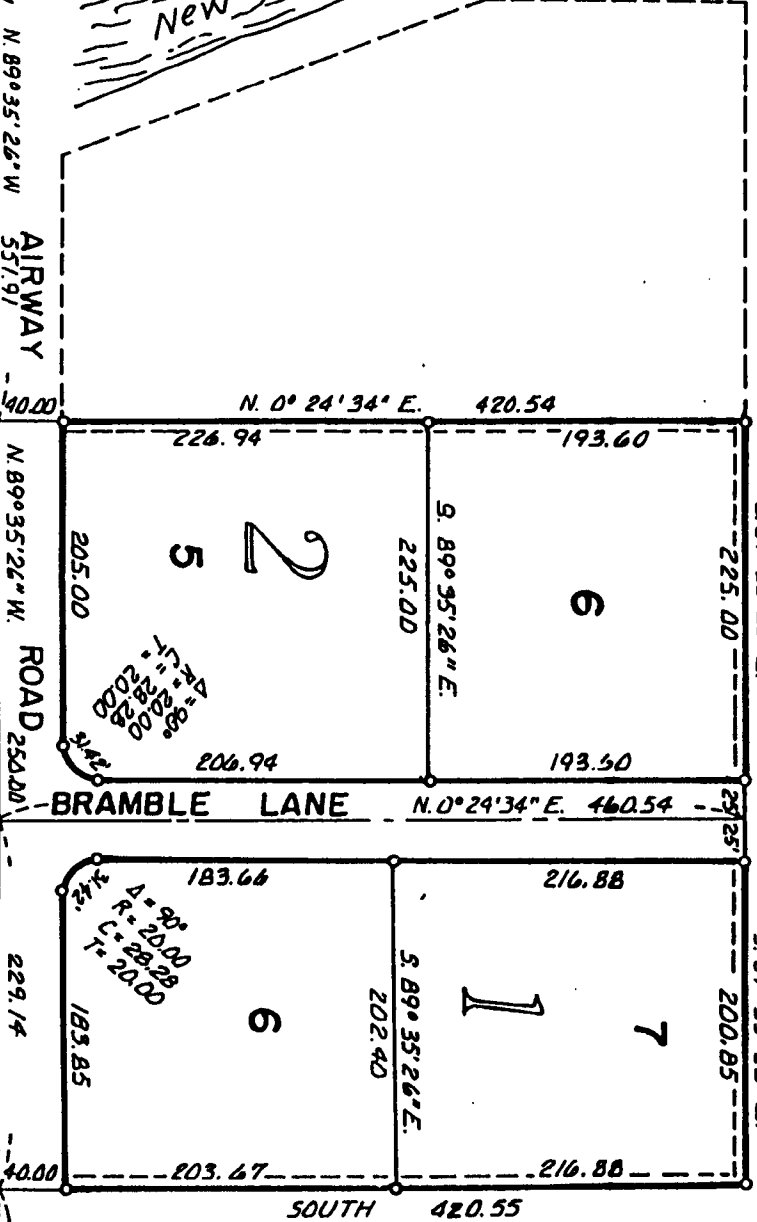
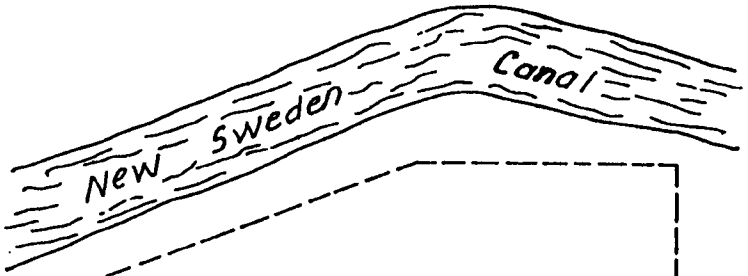
DIVISION NO. 1

BONNEVILLE COUNTY, IDAHO
PART OF THE SE. 1/4 SEC. 10, T.2N., R.37 E.B.M.

First American Title Company

Idaho Falls, Idaho 83404

This sketch is made solely for the purpose of assisting in locating the premises. The company assumes no liability for alleged loss or damage which may result from reliance on this map.



S. 1/4 COR., SECTION 10
T.2N., R.37 E.B.M.

S.E. COR., SEC. 10
T.2N., R.37 E.B.M.
(City Monument)
CITY BASE
(N. 89° 35' 03" W.)