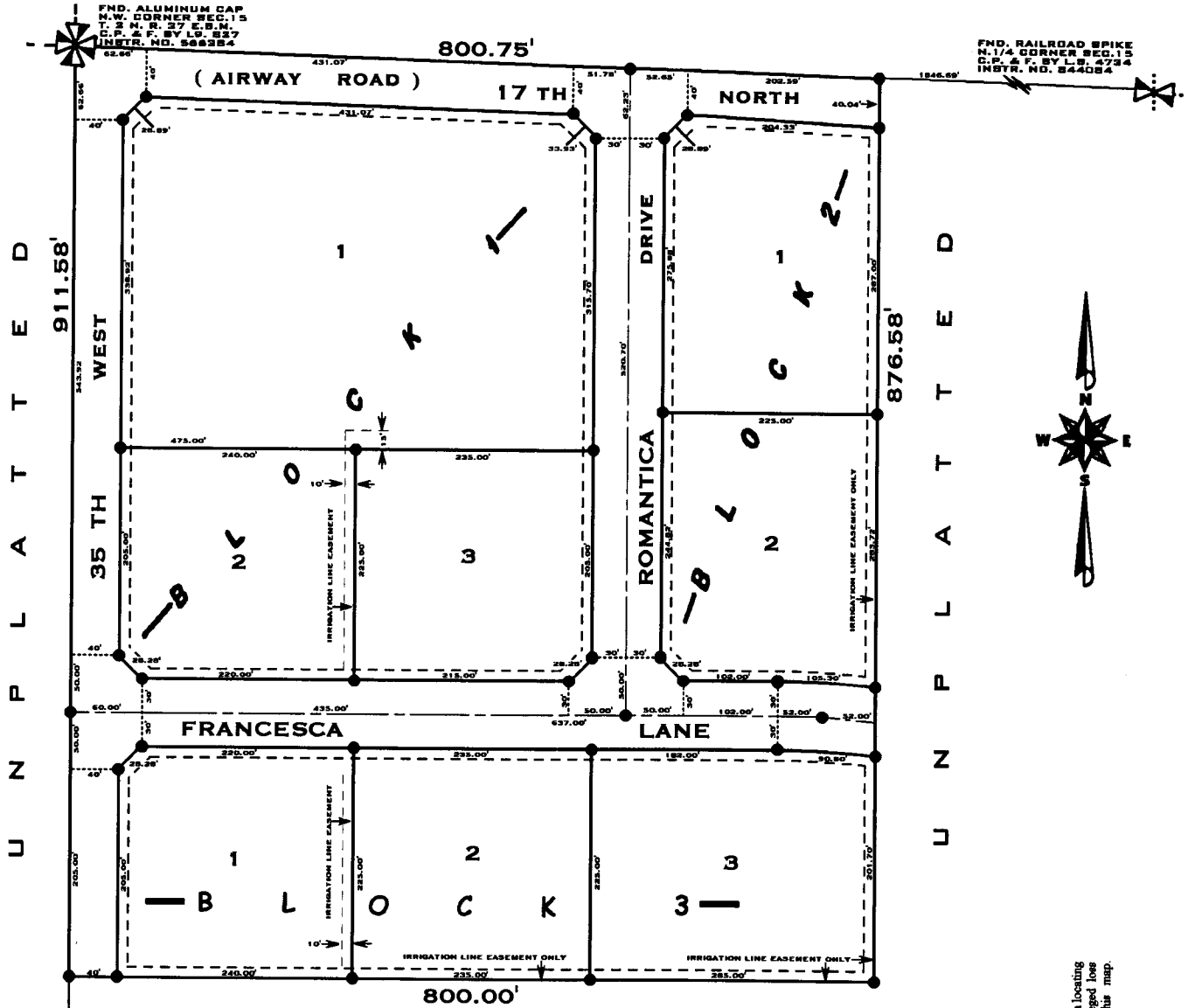


ROSEWOOD ACRES DIVISION NO. 9 BONNEVILLE COUNTY, IDAHO

BEING PART OF THE N.W. 1/4 N.W. 1/4
SECTION 15 T.2 N. R.37 E.B.M.

U N P L A T T E D



U N P L A T T E D

LEGEND & NOTES

- 5/8" x 30" Steel Re-bar set with plastic cap stamped L.S. 8795
- 1/2" x 24" Steel Re-bar set with plastic cap stamped L.S. 8795
- 15' Wide utility easement along all road frontages unless noted

First American Title Company
Idaho Falls, Idaho 83404

This sketch is made solely for the purpose of assisting in locating the premises. The company assumes no liability for alleged loss or damage which may result from reliance on this map.

