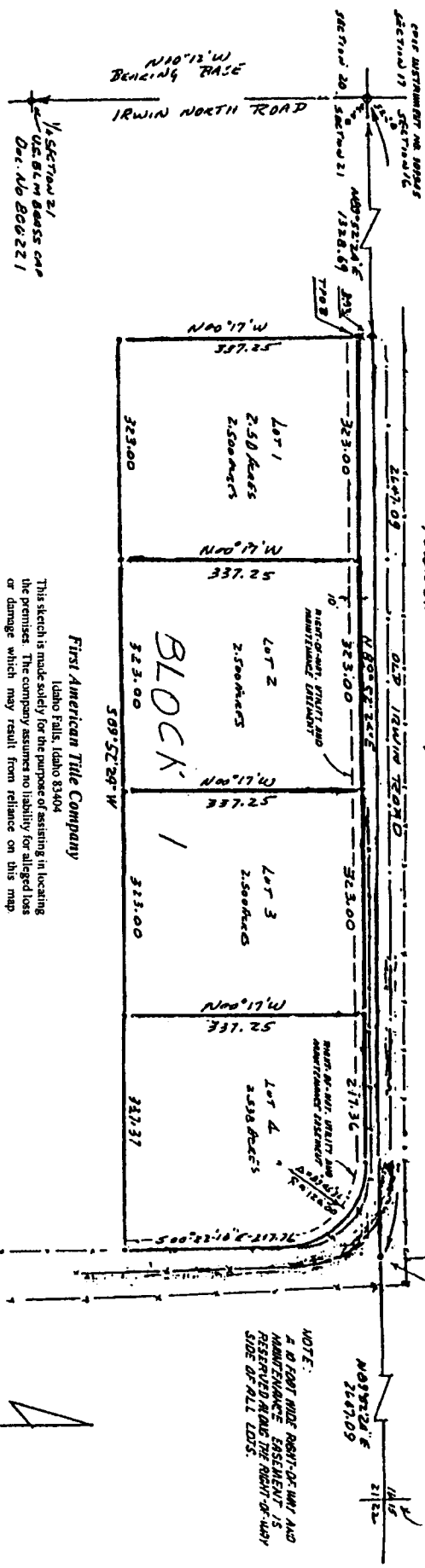


# ROTUNDO ADDITION - CITY OF IRWIN

BOONEVILLE COUNTY, IDAHO  
 BEING A PART OF THE NORTH 1/2, 1/4 & 1/8, NW 1/4, SECTION 21,  
 TOWN 51N, RANGE 84 EAST, BOISE MERIDIAN



First American Title Company  
 Idaho Falls, Idaho 83404

This sketch is made solely for the purpose of assisting in locating the premises. The company assumes no liability for alleged loss or damage which may result from reliance on this map.



NOTE:  
 A 10 FOOT WIDE RIGHT-OF-WAY AND  
 ABUTMENT ASSESSMENT IS  
 RESERVED ALONG THE RIGHT-OF-WAY  
 SIDE OF ALL LOTS.

- 1. INCORPORATES 1/2" 2" 1/2" IRON AND  
 WITH 2" ALUMINUM CAP  
 STAMPEL
- 2. ADVERTISES HEREON
- 3. 6" WIDE UTILITY EASEMENT  
 IS RESERVED ALONG THE  
 RIGHT OF WAY SIDE OF ALL  
 LOTS
- 4. U.S. G.M. BONNSCHAP