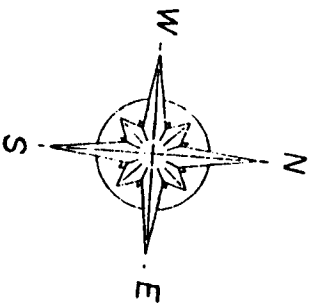


ROWBERRY'S ACRES SUBDIVISION

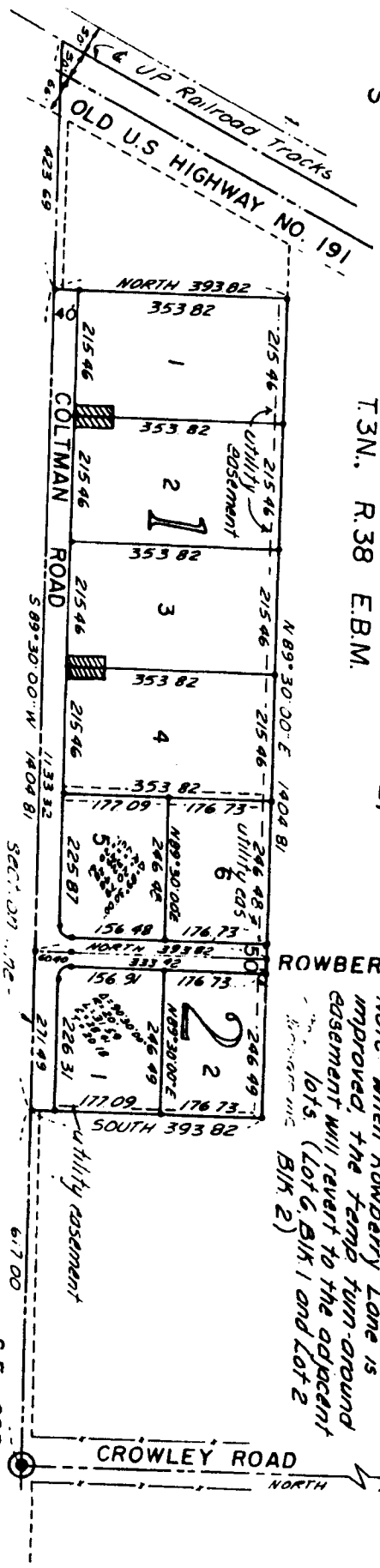


DIVISION NO. 1

BONNEVILLE COUNTY, IDAHO

Part of the
S 1/2 of the S.E. 1/4 of Section 2,
T.3N., R.38 E.B.M.

E. 1/4 COR. SEC. 2
T.3N., R.38 E.B.M.
(RECORDED COR.)



Note: Lots 1 and 2 will share a common driveway.
Lots 3 and 4 will share a common driveway.
Lots 5 and 6 and lots 1 and 2 Bk 2 will
arrange off of Rowberry Lane.

Note: When Rowberry Lane is
improved, the farm turn-around
easement will revert to the adjacent
lots. (Lot 6, Bk 1 and Lot 2
Bk 2)

First American Title Company
Tulsa Falls, Idaho 83404
This sketch is made solely for the purpose of assisting in locating
the premises. The company assumes no liability for alleged loss
or damage which may result from reliance on this map.



S.E. COR. SEC. 2
T.3N., R.38 E.B.M.
(RECORDED COR.)