

# ROYAL VACATION HOMES

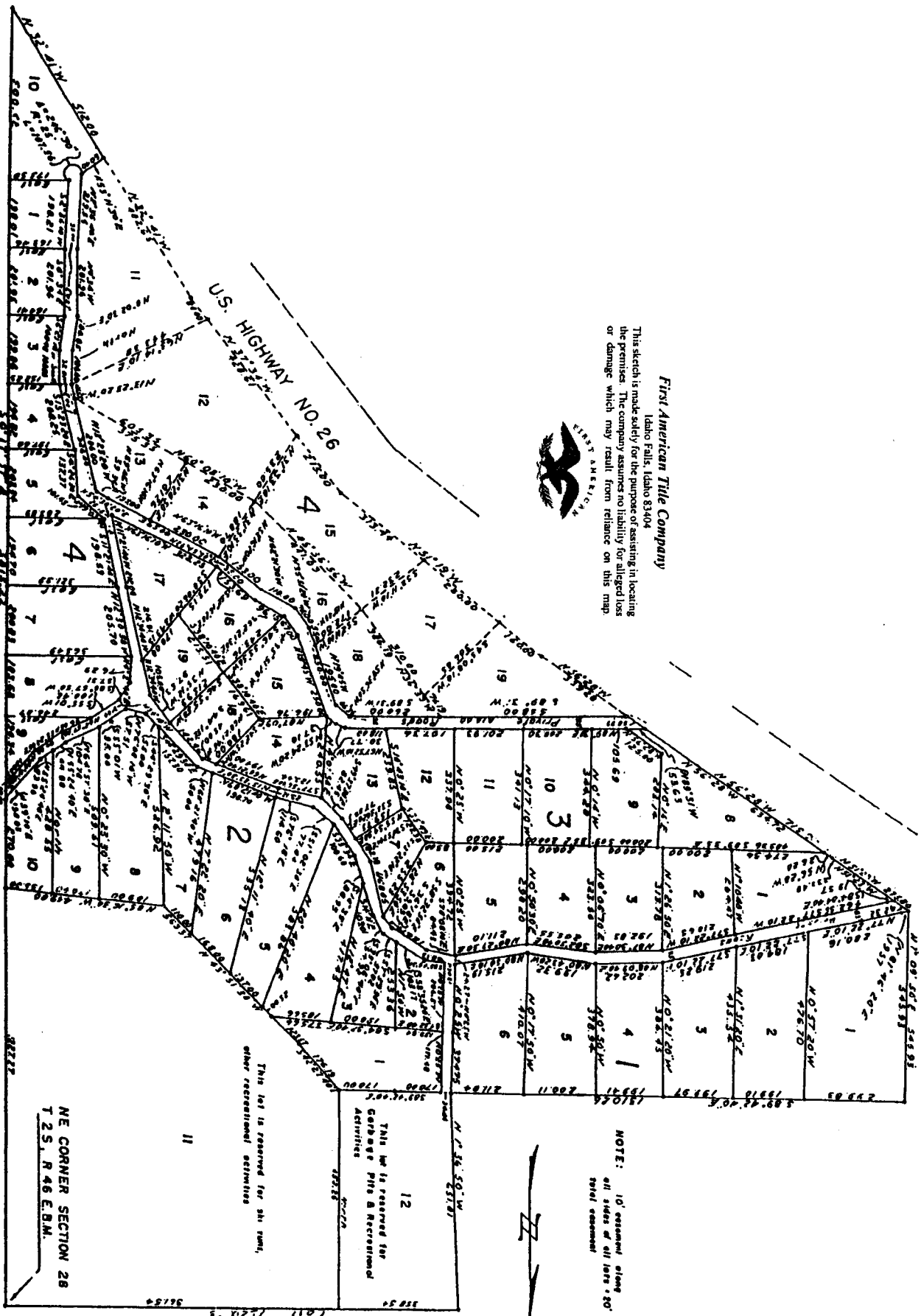
Part of Section 28 T. 2 S., R. 46 E. B. M.

BONNEVILLE COUNTY, IDAHO

First American Tile Company

Idaho Falls, Idaho 83404

This sketch is made solely for the purpose of assisting in locating the premises. The company assumes no liability for alleged loss or damage which may result from reliance on this map.



NOTE: 10' easement along all sides of all lots - 20' total easement

This lot is reserved for other recreational activities

This lot is reserved for Golf & Recreational Activities

NE CORNER SECTION 28 T. 2 S. R. 46 E. B. M.