

# BURD SUBDIVISION

## DIVISION NO. 1

BONNEVILLE COUNTY, IDAHO  
A PTN. OF THE N.W. 1/4 SEC. 25 T. 8. R. 45 E. 34 S.

First American Title Company

Idaho Falls, Idaho 83404

This sketch is made solely for the purpose of assisting in locating the premises. The company assumes no liability for alleged loss or damage which may result from reliance on this map.

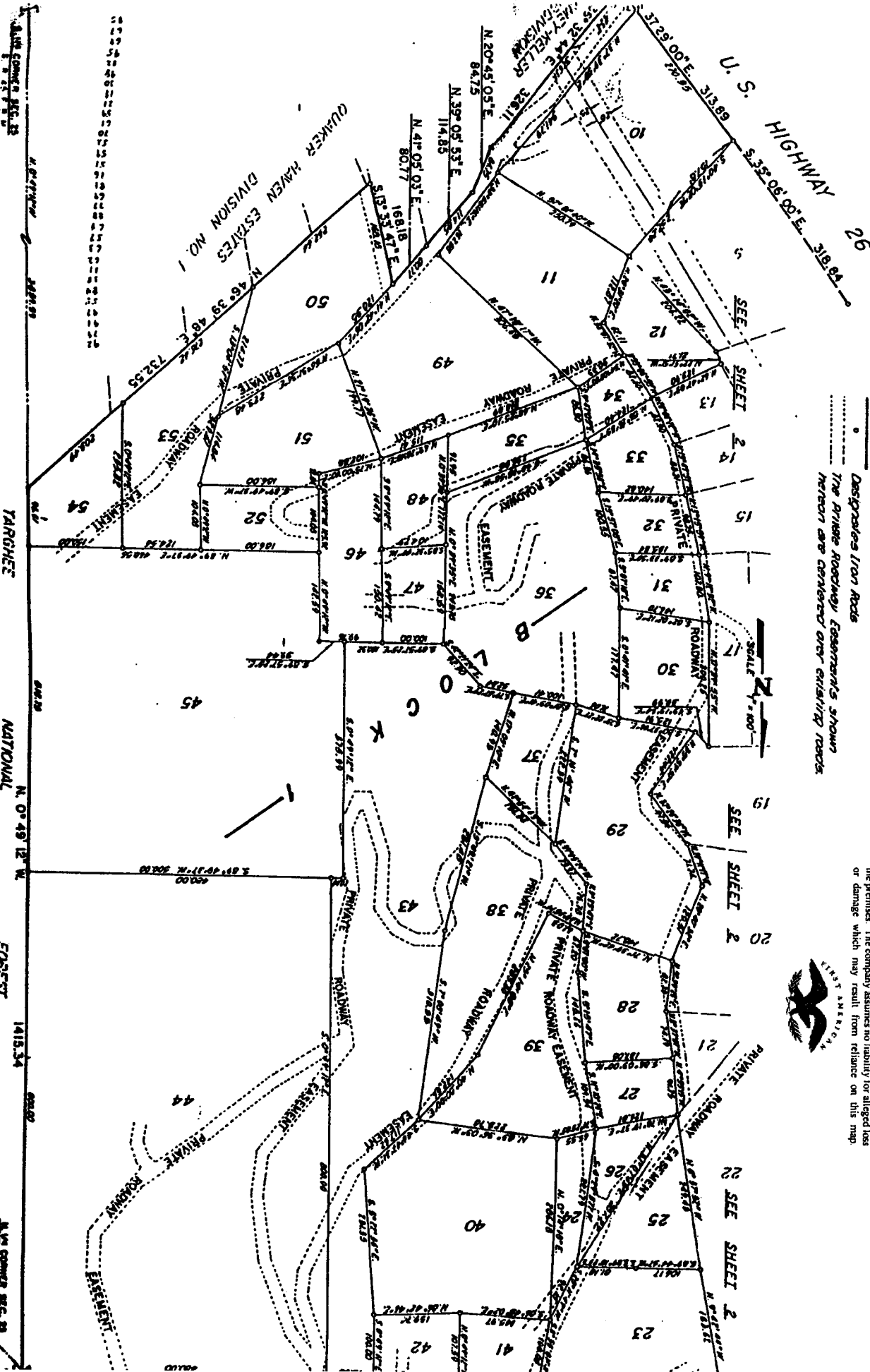
### NOTES

Designates Iron Rods

The Private Roadway Easements shown herein are generally over existing roads.



UNPLATTED



U. S. HIGHWAY 26  
 332° 08' 00\"/>

TARGHEE

NATIONAL FOREST

1415.34

UNPLATTED