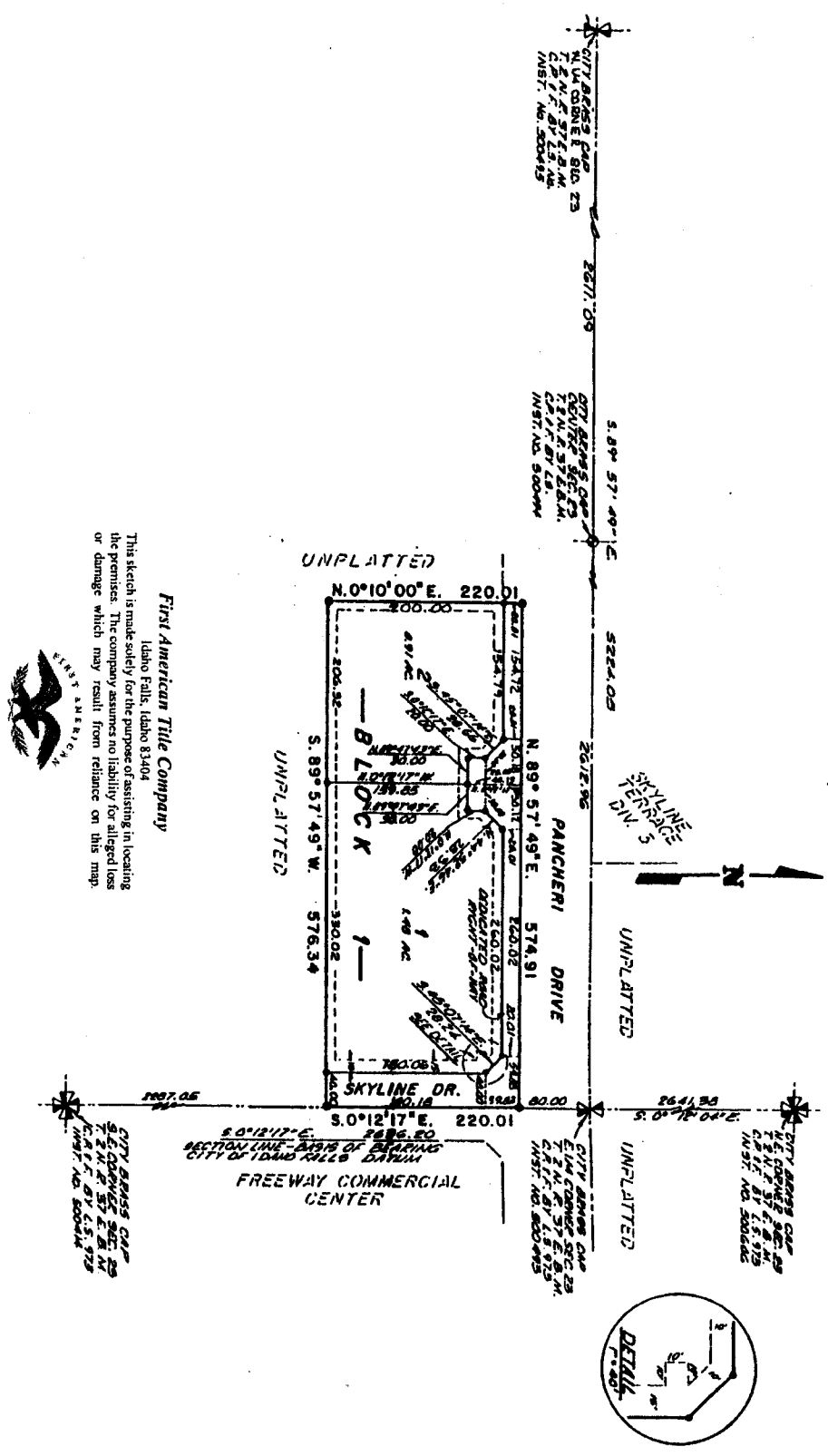


SAFARI 66

DIVISION NO. 1

AN ADDITION TO THE CITY OF IDAHO FALLS, BONNEVILLE COUNTY, IDAHO

BEING PART OF THE N.E. 1/4 S.E. 1/4 SECTION 23, T. 2 N., R. 37 E., B.M.



First American Title Company
 Idaho Falls, Idaho 83404

This sketch is made solely for the purpose of assisting in locating the premises. The company assumes no liability for alleged loss or damage which may result from reliance on this map.



LEGEND & NOTES

- 5/8" x 3/8" Steel Rebar set with plastic cap stamped L.S. 827
 - 1/2" x 3/4" Steel Rebar set with plastic cap stamped L.S. 827
 - Utility Encumbrance per [119] feet width unless noted otherwise.
- Always refer to Plat and Survey to be filed in the appropriate Section 1 and 2. Also consult with City of Idaho Falls to determine if any approved building plan files.