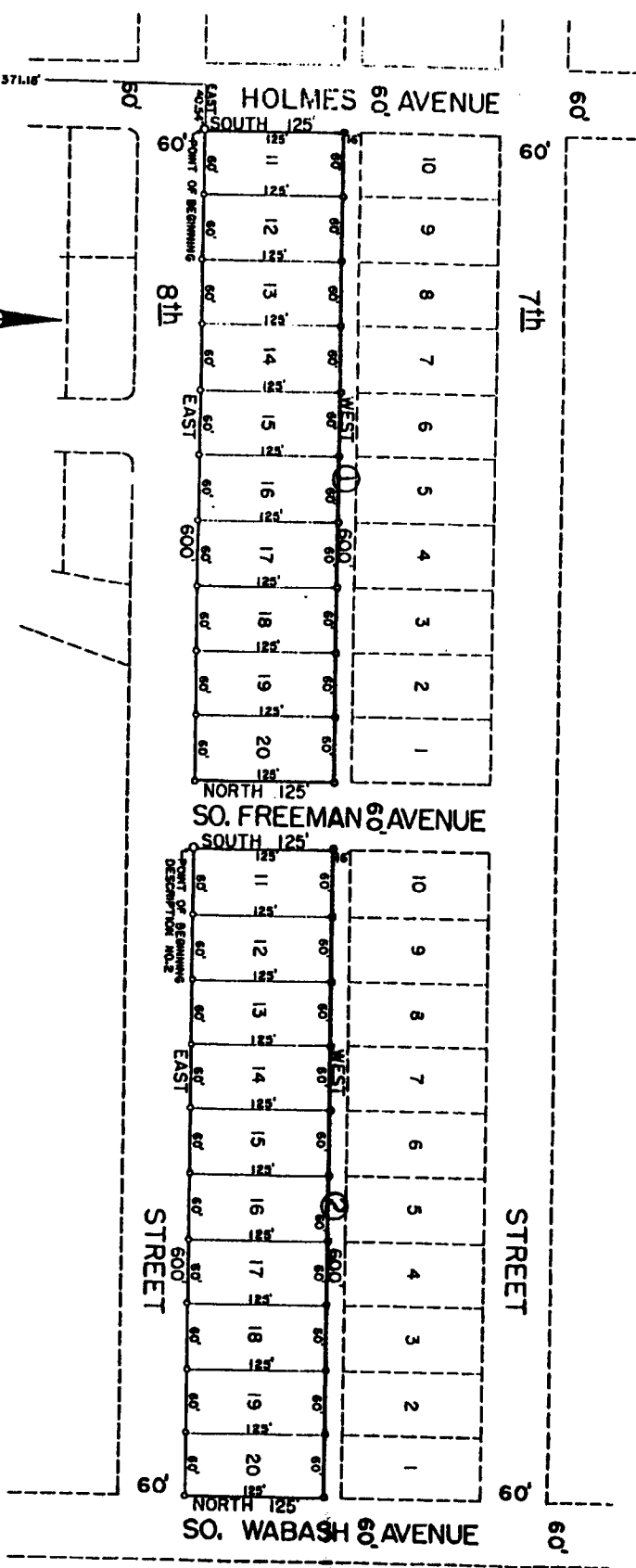


**SAFSTROM ADDITION**  
 (DIVISION NO. 11)

TO  
 THE CITY OF IDAHO FALLS, IDAHO.  
 A PORTION OF  
 NW1/4 of Sec. 20, T.2 N., R.38 E.B.M.



*First American Title Company*  
 Idaho Falls, Idaho 83404

This sketch is made solely for the purpose of assisting in locating the premises. The company assumes no liability for alleged loss or damage which may result from reliance on this map.

