

# SAGE ACRES DIVISION NO. 1

PART OF THE S.W. 1/4 SECTION 20 T. 3 N. R. 38 E. B. M.  
BONNEVILLE COUNTY, IDAHO

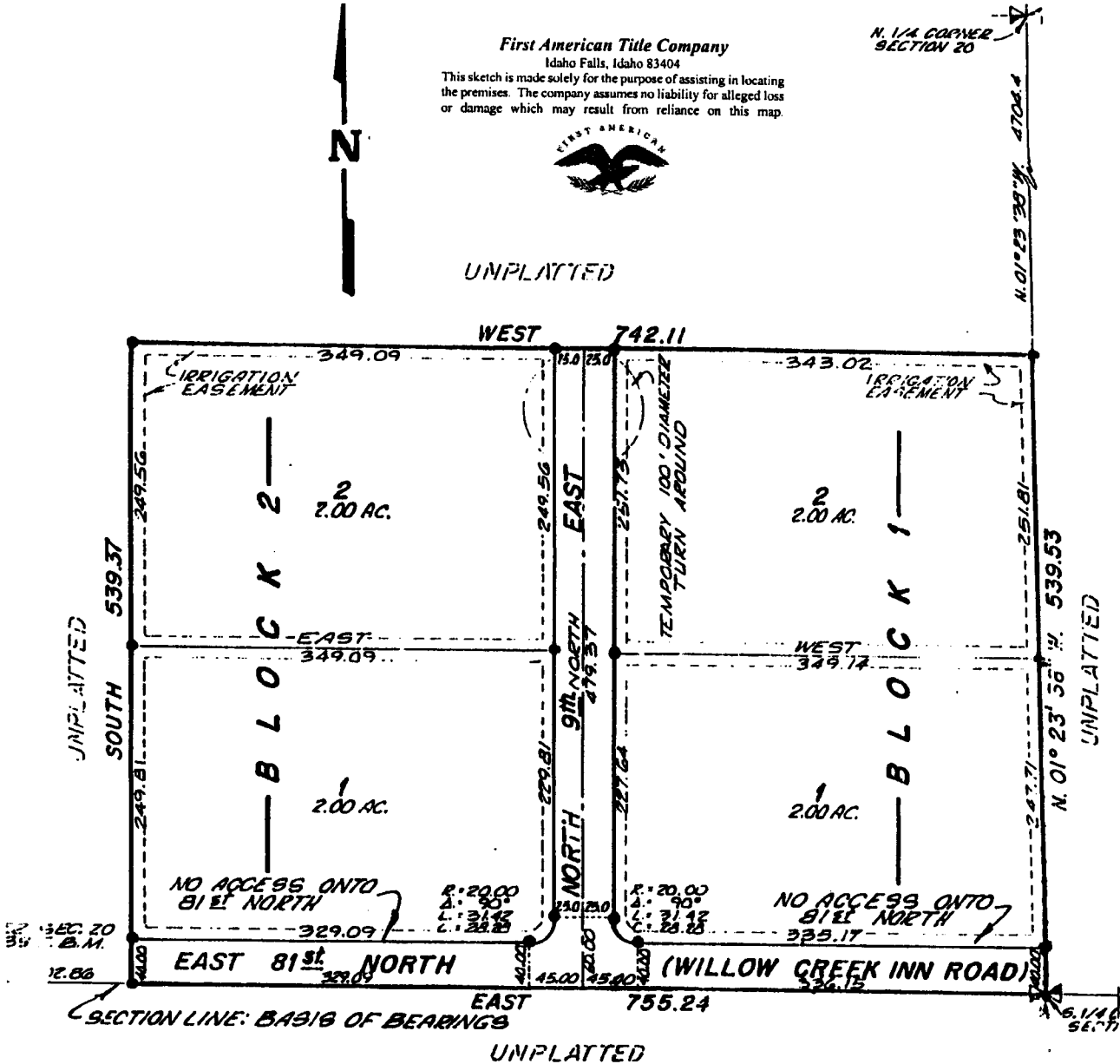
First American Title Company  
Idaho Falls, Idaho 83404

This sketch is made solely for the purpose of assisting in locating the premises. The company assumes no liability for alleged loss or damage which may result from reliance on this map.



UNPLATTED

N. 1/4 CORNER  
SECTION 20



## NOTES

- DENOTES IRON RODS
- DRAINAGE, IRRIGATION AND UTILITY EASEMENTS ARE 10 FEET WIDE UNLESS OTHERWISE NOTED
- DOMESTIC WATER IS THE RESPONSIBILITY OF THE INDIVIDUAL LOT OWNERS
- ROAD WILL NOT BE MAINTAINED BY THE COUNTY UNTIL BUILT TO THE STANDARD SHOWN ON IMPROVEMENT DRAWINGS AND APPROVED BY SAID COUNTY AFTER CONSTRUCTION