



A PLAT SHOWING

SALISBURY TRACTS

A SUBDIVISION IN THE NE 1/4 SECTION 8, TOWNSHIP 1 SOUTH, RANGE 45 EAST, S.M.
BONNEVILLE COUNTY IDAHO



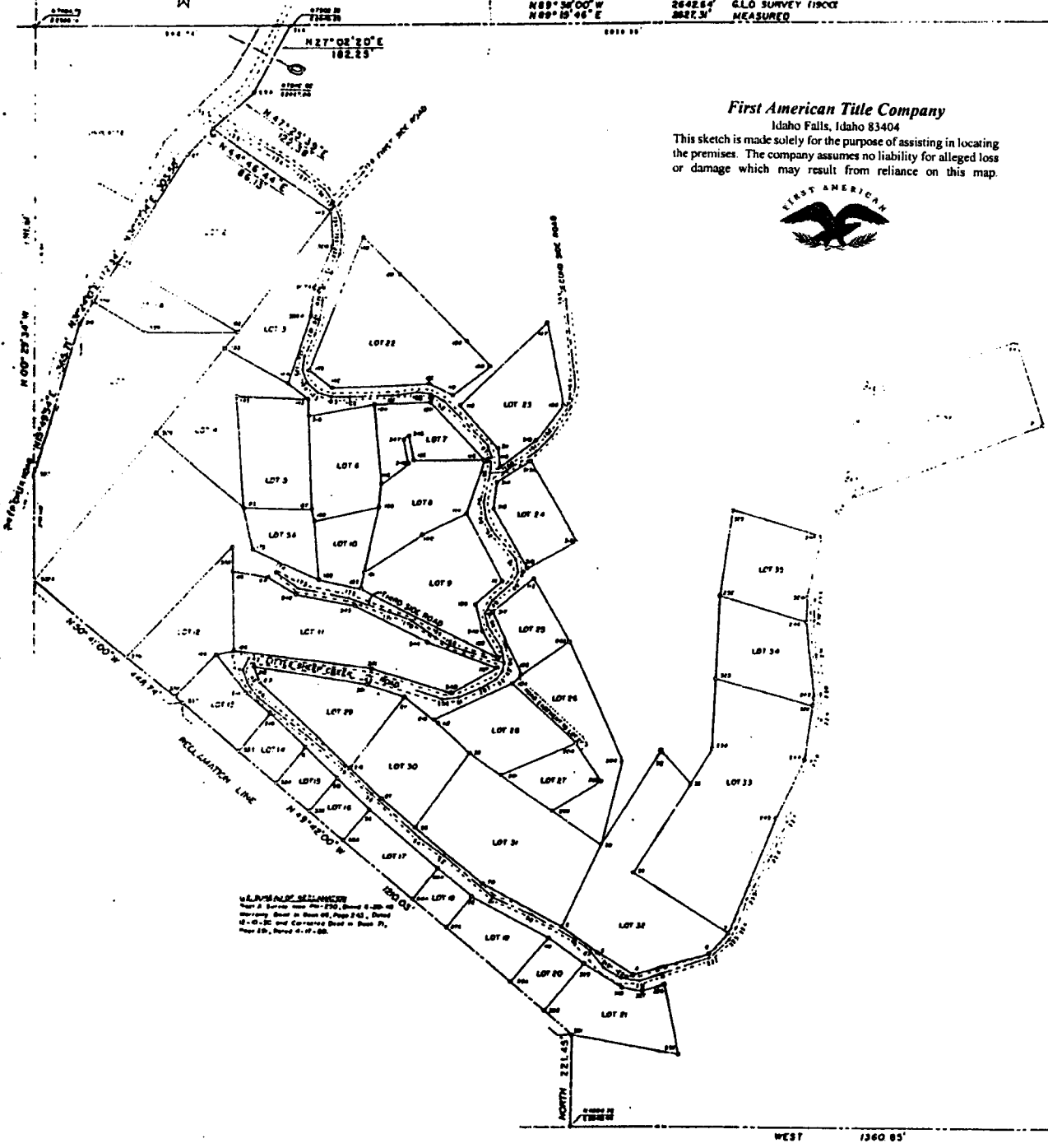
1977
N 89° 36' 00" W 2642.64' G.L.O. SURVEY 1980C
N 89° 15' 46" E 2627.31' MEASURED

Sec. 4
Sec. 5
Sec. 6
Sec. 7
Sec. 8

First American Title Company

Idaho Falls, Idaho 83404

This sketch is made solely for the purpose of assisting in locating the premises. The company assumes no liability for alleged loss or damage which may result from reliance on this map.



U.S. DEPARTMENT OF AGRICULTURE
Map 2 Series 1888-1920, Sheet 6, 200-40
Survey Book in Book 62, Page 214, Range
14-01-S and Contained Book in Book 17,
Page 18, Range 45-17-S.

Measured
G.L.O. Survey 1980C
2823.81'
2822.46'
2807.17' 0.02'

1360 05'
WEST
1360 05'
E 1/4 Corner
Section 8
E 1/4 Corner
Section 8