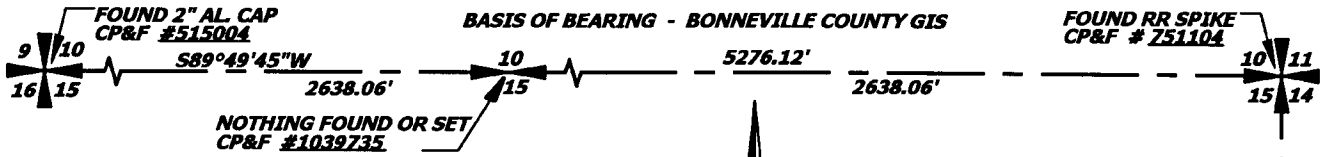


# SARGENT ESTATES

## DIVISION No. 1

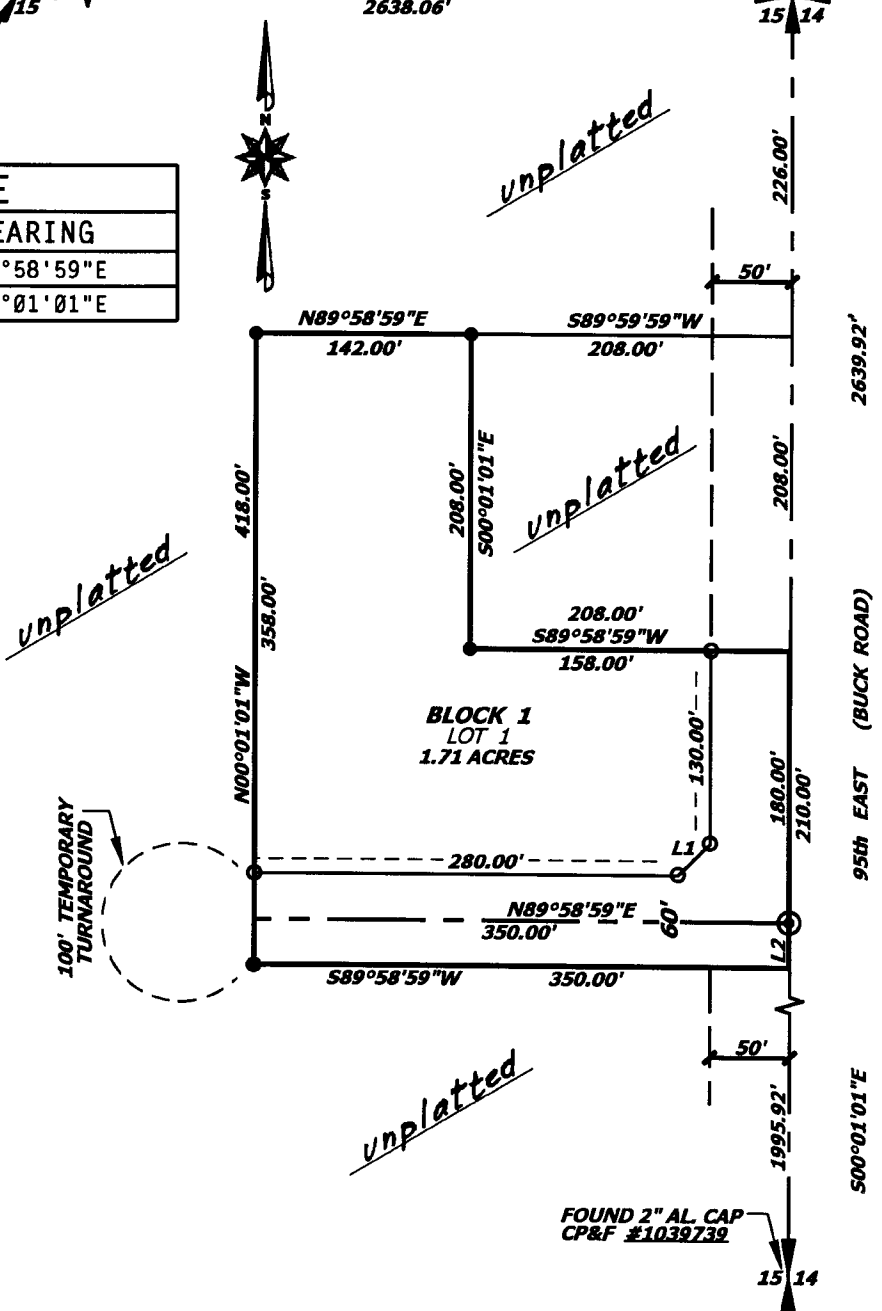
NE 1/4 SECTION 15, T. 3 N. R. 39 E., B.M.  
BONNEVILLE COUNTY, IDAHO



LINE TABLE		
LINE	LENGTH	BEARING
L1	28.28	N44°58'59"E
L2	30.00	S00°01'01"E

### LEGEND

- SECTION CONTROL CORNERS
- PLACED 5/8"x30" IRON ROD WITH CAP MARKED P.L.S. 4563
- PLACED 1/2"x24" IRON ROD WITH CAP MARKED P.L.S. 4563
- UTILITY EASEMENTS ARE 10' WIDE ALONG ALL STREET FRONTAGES.
- MONUMENT TO BE PLACED AFTER CONSTRUCTION.



**First American Title Company**  
Idaho Falls, Idaho 83404

This sketch is made solely for the purpose of assisting in locating the premises. The company assumes no liability for alleged loss or damage which may result from reliance on this map.

