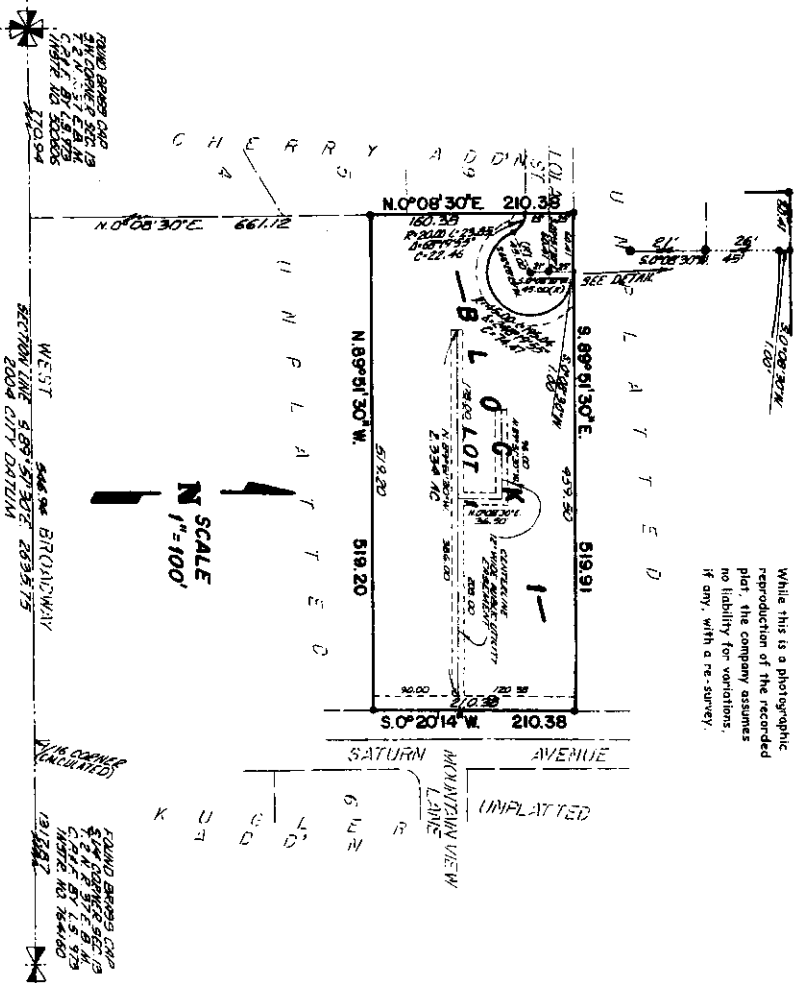


SATURN VILLAGE DIVISION NO. 1

AN ADDITION TO THE CITY OF IDAHO FALLS, BONNEVILLE COUNTY, IDAHO
IN THE SW 1/4 OF THE SW 1/4 OF SECTION 13 T. 2 N. R. 37 E., B.M.

First American Title Company
 Idaho Falls, Id 83404
 While this is a photographic
 reproduction of the recorded
 plat, the company assumes
 no liability for variations,
 if any, with a re-survey.



LEGEND & NOTES

- 5/8" x 3/32" Steel roller set with plastic cap stamped I.S. 8385
 - 1/2" x 3/32" Steel roller set with plastic cap stamped I.S. 8386
 - 5/8" Steel roller (found with plastic cap stamped I.S. 8327)
- A transfer from Idaho Public Utility Commission is hereby granted along the Saturn Avenue and Lake Street frontages within Lot 1.