

# SAVEFAST ADDITION DIVISION No. 1

TO THE CITY OF IDAHO FALLS, BONNEVILLE COUNTY, IDAHO  
BEING PART OF THE N.E.1/4 OF THE N.W.1/4 SECTION 24, T. 2N., R. 37E., B.M.

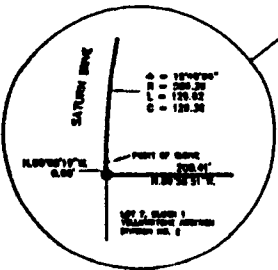
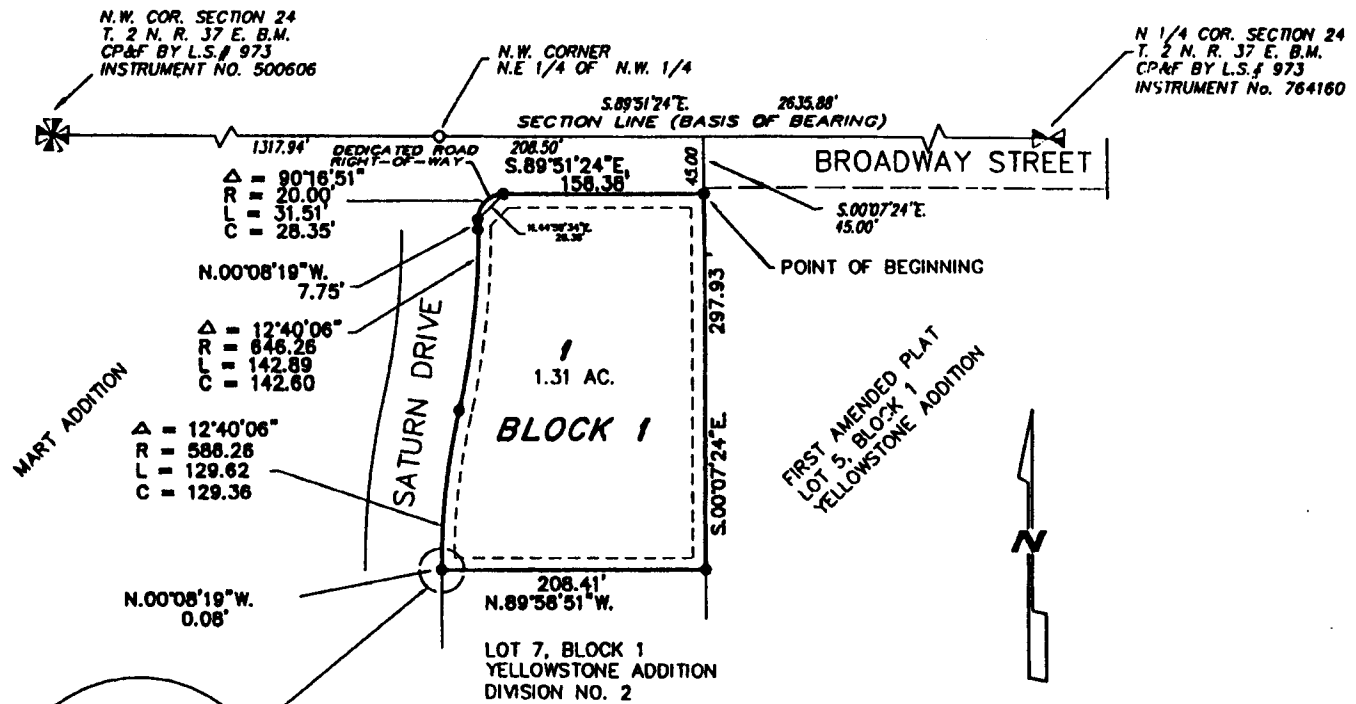
First American Title Company  
Idaho Falls, Idaho 83404

This sketch is made solely for the purpose of assisting in locating the premises. The company assumes no liability for alleged loss or damage which may result from reliance on this map.



### LEGEND & NOTES

- FOUND IRON ROD
- 5/8" X 30" Steel Re-bar SET WITH PLASTIC CAP STAMPED L.S.# 8795
- Utility easements 10 feet wide unless otherwise noted



DETAIL NOT TO SCALE