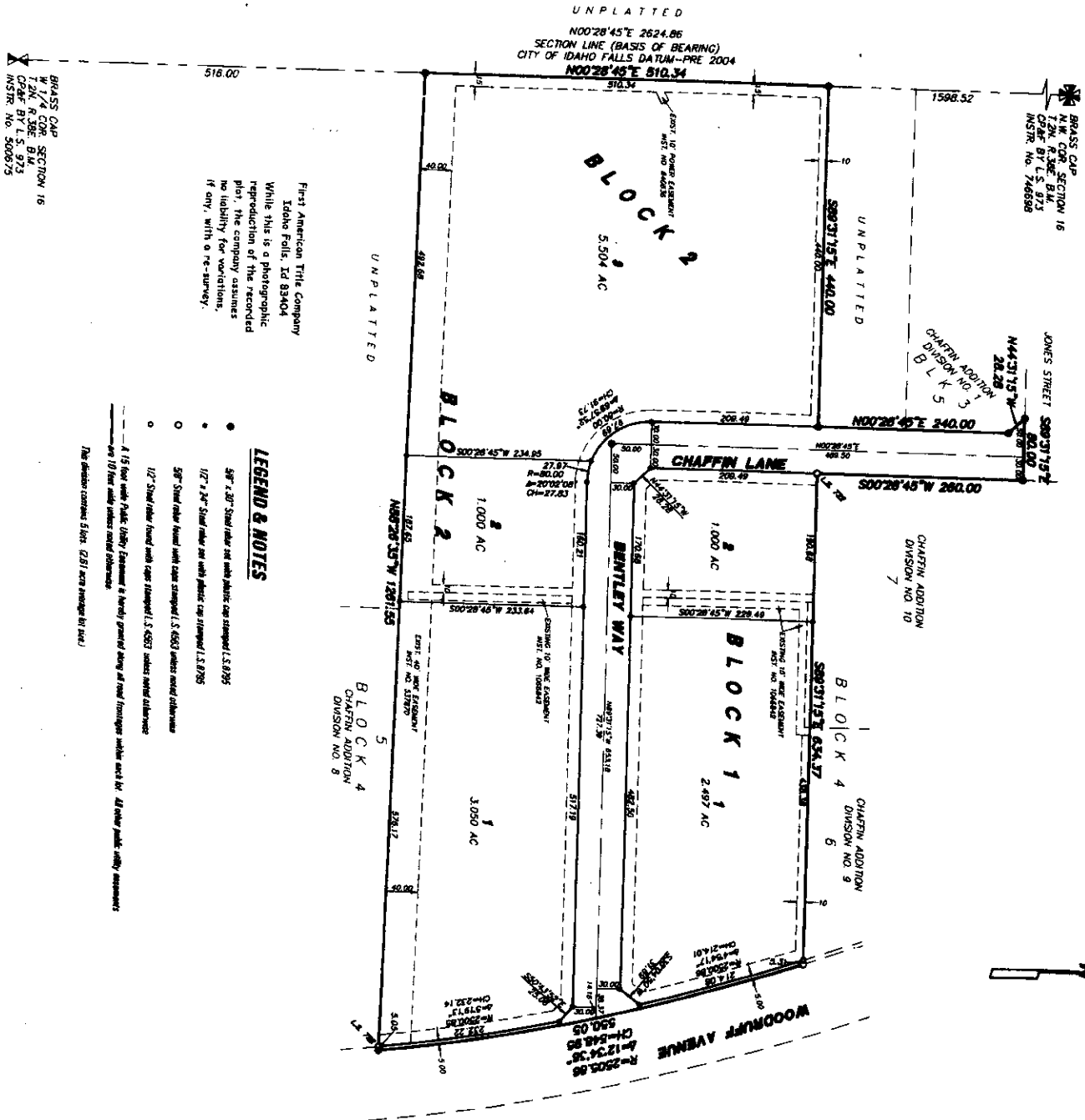


SAYER BUSINESS PARK

AN ADDITION TO THE CITY OF DAHO FALLS, BONNEVILLE COUNTY, IDAHO

INCLUDING A REPLAT OF A PORTION OF LOT 6, BLOCK 4, CHAFFIN ADDITION, DIVISION NO. 1 LYING IN THE NW 1/4 OF SECTION 16, 12N RANGE 8E



BRASS CAP
1/4 COR. SECTION 16
1/4 COR. RANGE 8E
1/4 COR. TWP. 12N
INST. No. 508672

BRASS CAP
1/4 COR. SECTION 16
1/4 COR. RANGE 8E
1/4 COR. TWP. 12N
INST. No. 746898

First American Title Company
Idaho Falls, ID 83404

While this is a photographic reproduction of the recorded plat, the company assumes no liability for variations, if any, with a re-survey.

LEGEND & NOTES

- 3/4" x 3/4" Steel value set with plastic cap stamped (S. 8795)
 - 1/2" x 2 1/2" Steel value set with plastic cap stamped (S. 8795)
 - 3/8" Steel value found with cap stamped (S. 8653) unless noted otherwise
 - 1/2" Steel value found with cap stamped (S. 8653) unless noted otherwise
- 1/4" 15' from Public Utility Easement is hereby granted along all road frontages within each lot. All other public utility easements are 10' from public utility easements.
- The distance contained 5.504 (2.81 acres average lot area)

NOTE:
DIRECT ACCESS
ONTO WOODRUFF
IS NOT PERMITTED