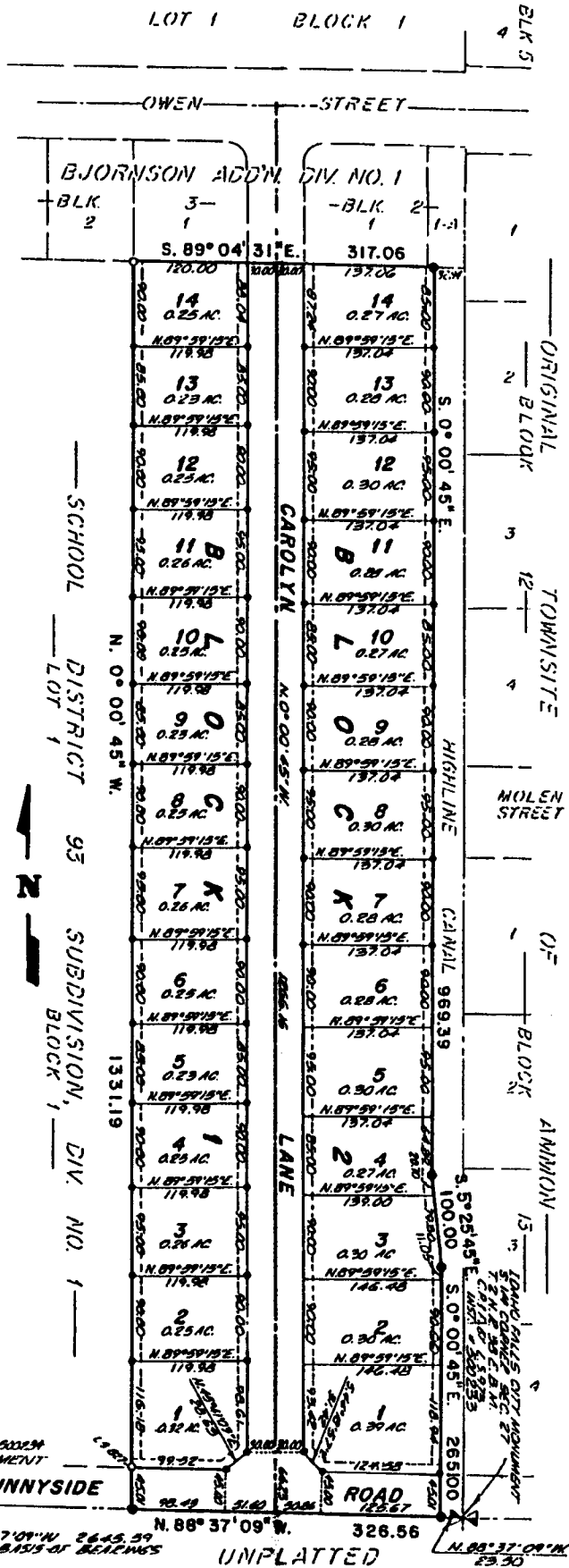


# SCHOOLSIDE ADDITION DIVISION NO. 1

TO THE CITY OF ANMON, BONNEVILLE COUNTY, IDAHO  
BEING PART OF THE S. E. 1/4 SW. 1/4, SECTION 27, T. 2 N., R. 38 E., B.M.



**First American Title Company**  
 Idaho Falls, Idaho 83404  
 This sketch is made solely for the purpose of assisting in locating the premises. The company assumes no liability for alleged loss or damage which may result from reliance on this map.

- LEGEND**
- 3/8" x 30" Steel Re-bar set with plastic cap stamped L.S. 827
  - 1/2" x 24" Steel Re-bar set with plastic cap stamped L.S. 827
  - Steel Re-bar found
- 4 Top foot utility easements along all road frontages with a 10' R.O.W. All other easements are 5' R.O.W. unless otherwise noted.

C.R.F. BY L.S. 979 INST#000224  
 IDAHO FALLS CITY MEASUREMENT  
 5th CORNER SEC 27  
 T. 2 N., R. 38 E., B.M.  
 255.55

N. 88° 37' 09" W. 264.55  
 SECTION LINE - BASIS OF BEARINGS  
 UNPLATTED