

SHADOW MOUNTAIN

DIVISION NO. 1

PART OF THE NE. 1/4 OF SECTION 32, T. 2 N., R. 38 E.B.M.

NORTH 1/4 COR. SEC. 32.
T. 2 N., R. 38 E.B.M.
(CITY MONUMENT)

NE COR. SEC. 32.
T. 2 N., R. 38 E.B.M.
(CITY MONUMENT)



First American Tile Company
Idaho Falls, Idaho 83404

This sketch is made solely for the purpose of assisting in locating the premises. The company assumes no liability for alleged loss or damage which may result from reliance on this map.



Indicates a street monument placed after construction.

Indicates a 10' wide utility easement is reserved along the street side of all lots.

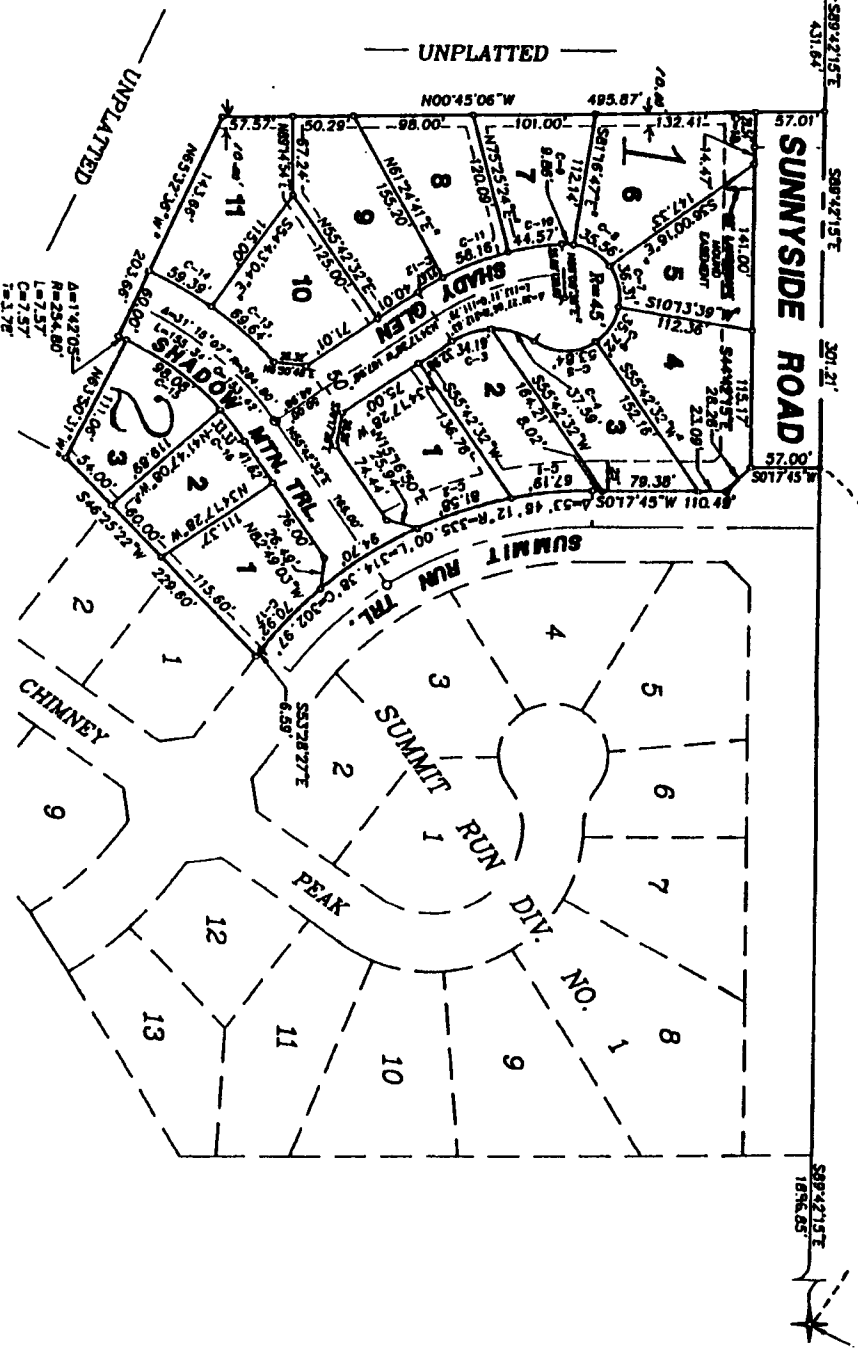
Utility easements are 8' thru each lot unless otherwise shown.

Indicates a 1/2" x 24" iron rod placed with a yellow plastic cap marked L.S. 760.

NOTES

NO.	RADIUS	ARC	CHORD	DELTA	TANGENT
1	22.00	6.12	6.12	117.94	22.00
2	22.00	6.12	6.12	117.94	22.00
3	22.00	6.12	6.12	117.94	22.00
4	22.00	6.12	6.12	117.94	22.00
5	22.00	6.12	6.12	117.94	22.00
6	22.00	6.12	6.12	117.94	22.00
7	22.00	6.12	6.12	117.94	22.00
8	22.00	6.12	6.12	117.94	22.00
9	22.00	6.12	6.12	117.94	22.00
10	22.00	6.12	6.12	117.94	22.00
11	22.00	6.12	6.12	117.94	22.00
12	22.00	6.12	6.12	117.94	22.00
13	22.00	6.12	6.12	117.94	22.00
14	22.00	6.12	6.12	117.94	22.00
15	22.00	6.12	6.12	117.94	22.00
16	22.00	6.12	6.12	117.94	22.00
17	22.00	6.12	6.12	117.94	22.00
18	22.00	6.12	6.12	117.94	22.00

CURVE TABLE



UNPLATTED

UNPLATTED