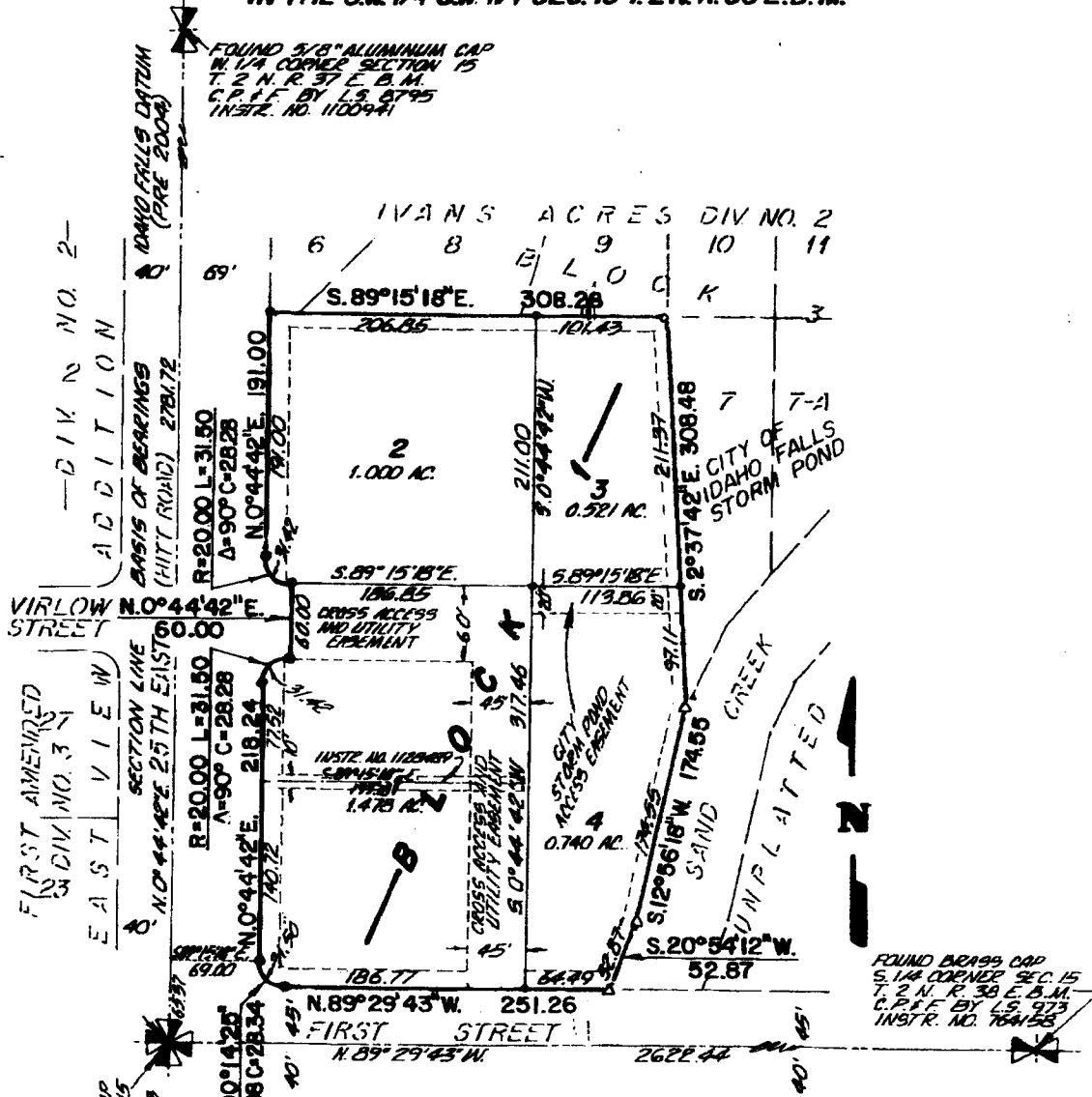


# SHADY GROVE DIVISION NO. 1

AN ADDITION TO THE CITY OF IDAHO FALLS,  
BONNEVILLE COUNTY, IDAHO

BEING A REPLAT OF A PART OF LOT 7 BLOCK 3, IVANS ACRES, DIVISION NO. 2  
IN THE S. 1/4 S.W. 1/4 SEC. 15 T. 2 N. R. 38 E. B. M.



— DIVISION NO. 2 —  
ADDITION  
BASIS OF BEARINGS  
(HITT ROAD) 2781.72  
IDAHO FALLS DATUM  
(PIRE 2004)

FIRST AMENDED  
DIVISION NO. 3  
EAST VIEW  
SECTION LINE  
N. 0° 44' 42" E. 25 TH EXISTING

LOT 9 BLK 23  
MELBOURNE PARK  
DIVISION NO. 10  
FOUND BRASS CAP  
S. 1/4 CORNER SEC. 15  
T. 2 N. R. 38 E. B. M.  
C.P.F. BY L.S. 8795  
INST. NO. 764803

FOUND 5/8" ALUMINUM CAP  
N. 1/4 CORNER SECTION 15  
T. 2 N. R. 38 E. B. M.  
C.P.F. BY L.S. 8795  
INST. NO. 1100941

FOUND BRASS CAP  
S. 1/4 CORNER SEC. 15  
T. 2 N. R. 38 E. B. M.  
C.P.F. BY L.S. 873  
INST. NO. 764155

LOT 1 BLOCK 1  
EASTERN IDAHO COMMERCE  
CENTER  
DIV. NO. 1

First American Title Company  
Idaho Falls, Idaho 83404

While this is a photographic  
reproduction of the recorded  
plat, the Company assumes no  
liability for variations,  
if any, with a re-survey.

### LEGEND & NOTES

- 5/8" x 30" Steel rebar set with plastic cap stamped L.S. 8795
  - 1/2" x 24" Steel rebar set with plastic cap stamped L.S. 8795
  - 1/2" Steel rebar found with caps stamped L.S. 760 unless noted otherwise
- A Fifteen foot wide Public Utility Easement is hereby granted along all road frontages within each lot. All other public utility easements are ten feet wide unless noted otherwise.
- △ 5/8" STEEL REBAR FOUND WITH PLASTIC CAP STAMPED L.S. 722