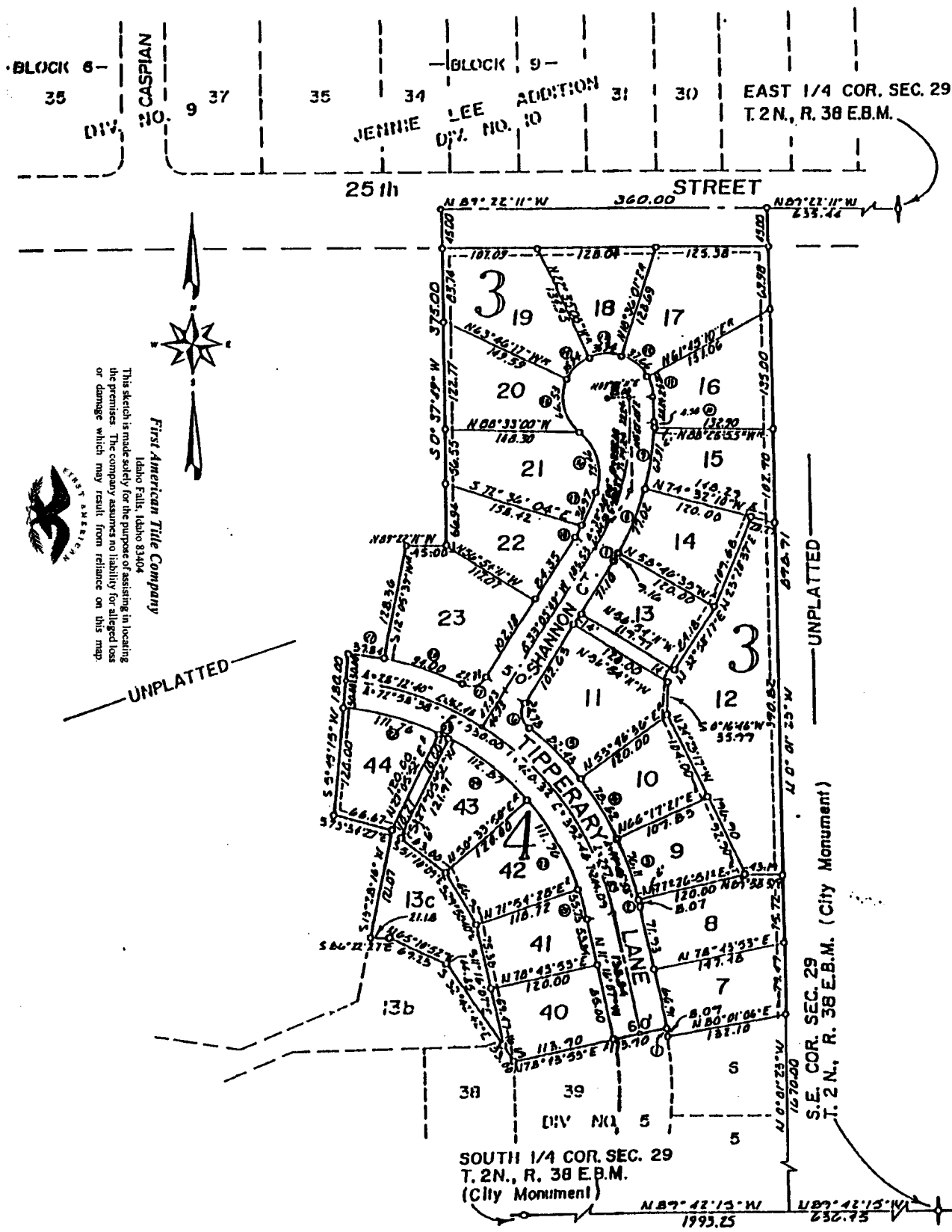


# SHAMROCK PARK ADDITION DIVISION NO. 6

TO THE CITY OF IDAHO FALLS, IDAHO  
PART OF THE SE. 1/4 OF SEC. 29, T.2N., R.38E.B.M.



SOUTH 1/4 COR. SEC. 29  
T. 2N., R. 38 E.B.M.  
(City Monument)

### NOTES

- Indicates a 1/2" x 24" iron rod with a yellow plastic cap marked L.S. 760.
- - - utility easements are 8' thru each lot unless otherwise shown.
- 10' wide utility easement is reserved along the street side of all lots.

First American Title Company  
Idaho Falls, Idaho 83404  
This sketch is made solely for the purpose of assisting in locating the premises. The company assumes no liability for alleged loss or damage which may result from reliance on this map.



UNPLATTED

UNPLATTED

S.E. COR. SEC. 29  
T. 2 N., R. 38 E.B.M. (City Monument)