

SHAMROCK PARK ADDITION

DIVISION NO. 10

TO THE CITY OF IDAHO FALLS, IDAHO

PART OF THE WEST 1/2 OF THE S.E. 1/4 OF SEC. 29, T.2N., R.38E.B.M.

First American Title Company

Idaho Falls, Idaho 83404

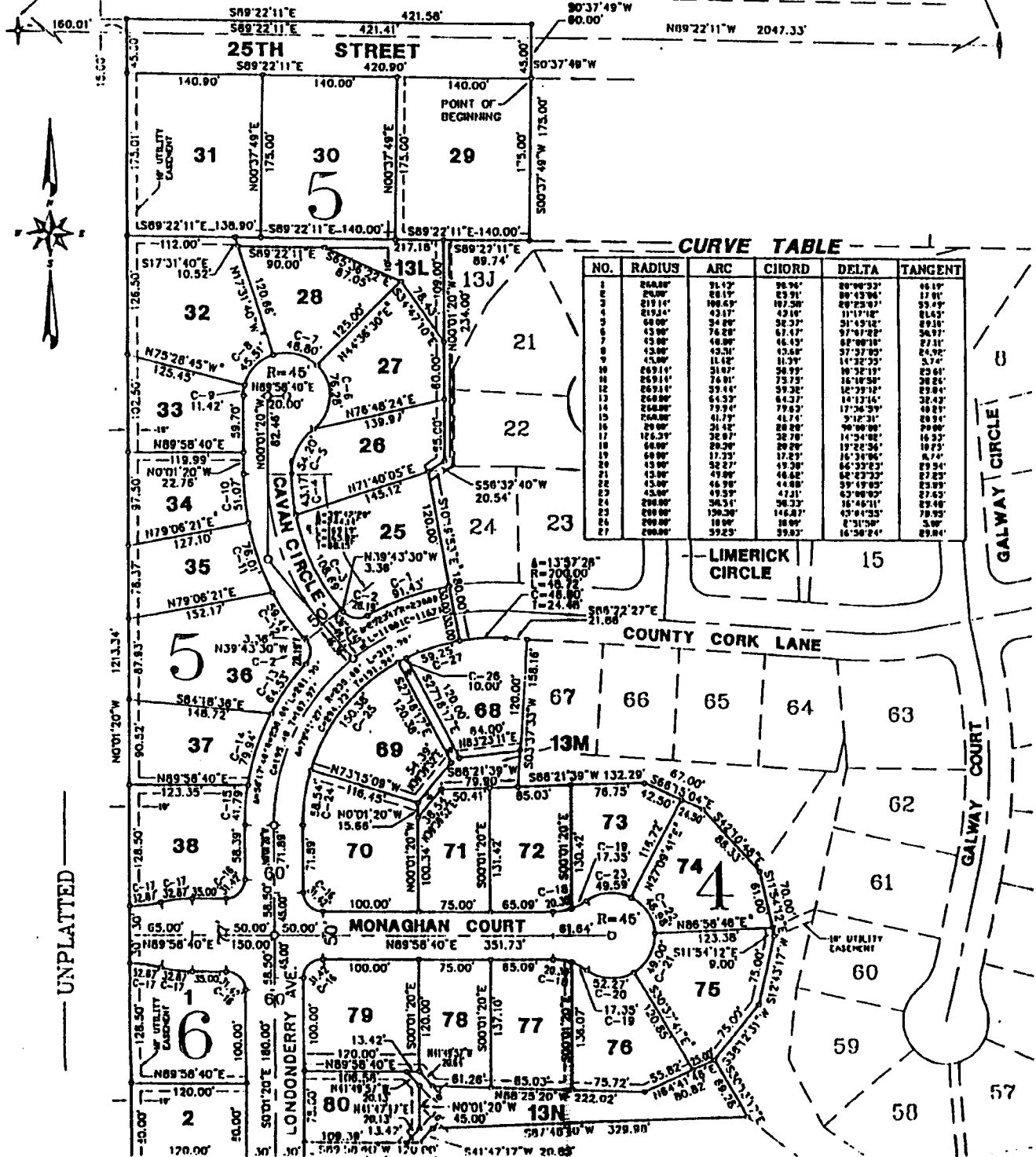
This sketch is made solely for the purpose of assisting in locating the premises. The company assumes no liability for alleged loss or damage which may result from reliance on this map.



N.W. COR. S.E. 1/4
SEC. 29, T.2N.,
R.38E.B.M.
(CITY MONUMENT)

EAST 1/4 COR. SEC. 29,
T.2N., R.38E.B.M.
(CITY MONUMENT)

JENNIE LEE ADD. DIV. NO. 9



NO.	RADIUS	ARC	CHORD	DELTA	TANGENT
1	264.88'	36.42'	36.96'	89°40'32"	46.17'
2	240.00'	24.00'	24.00'	90°00'00"	17.01'
3	219.14'	109.63'	107.20'	80°23'07"	55.49'
4	219.14'	219.14'	421.41'	171°17'01"	81.43'
5	64.00'	34.20'	34.20'	91°15'12"	29.16'
6	43.00'	76.20'	67.47'	97°40'22"	34.97'
7	43.00'	46.80'	46.43'	89°00'18"	27.31'
8	43.00'	43.00'	43.51'	97°37'05"	24.92'
9	47.00'	11.42'	11.73'	14°32'33"	5.74'
10	269.14'	31.07'	30.93'	90°38'19"	25.61'
11	269.14'	76.01'	73.73'	16°18'58"	20.26'
12	269.14'	59.14'	59.32'	12°39'42"	29.04'
13	268.00'	64.33'	64.37'	14°32'16"	32.43'
14	268.00'	79.94'	79.83'	17°26'39"	40.21'
15	268.00'	41.73'	41.74'	91°12'31"	20.94'
16	20.00'	20.00'	20.00'	90°00'00"	70.00'
17	174.39'	32.07'	32.78'	14°34'08"	16.33'
18	64.00'	20.20'	20.20'	19°22'36"	10.73'
19	60.00'	17.33'	17.23'	16°34'06"	8.74'
20	43.00'	49.30'	49.30'	64°33'53"	29.94'
21	43.00'	49.80'	48.42'	82°23'23"	27.25'
22	43.00'	46.98'	44.80'	59°19'05"	23.93'
23	200.00'	45.00'	47.11'	63°00'00"	27.63'
24	200.00'	50.31'	50.31'	16°40'11"	29.48'
25	200.00'	150.20'	146.87'	67°01'25"	70.92'
26	200.00'	10.00'	10.00'	2°11'50"	3.00'
27	200.00'	39.23'	39.83'	16°30'24"	29.04'