

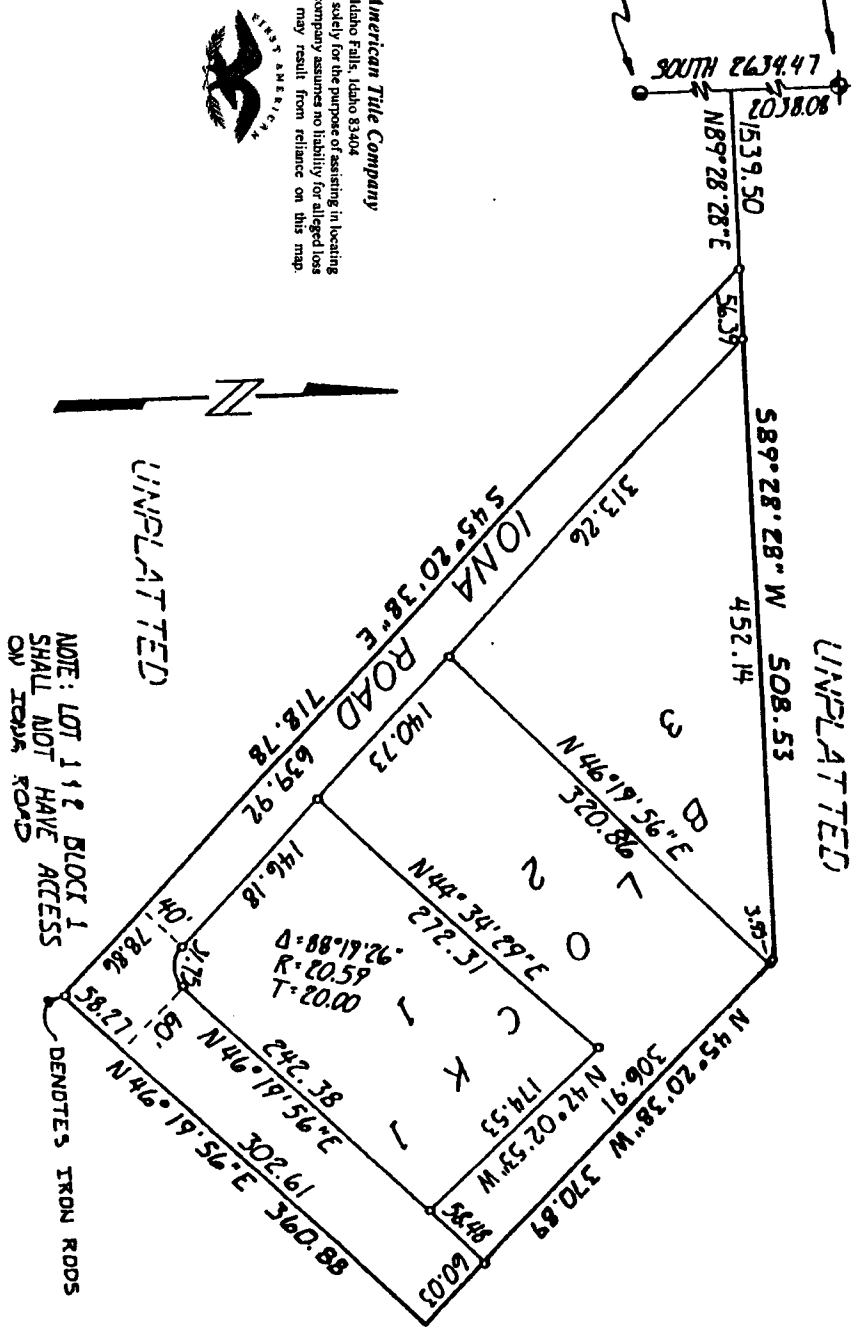
SIMMONS HEIGHTS

DIVISION NO. 1, BONNEVILLE COUNTY, IDAHO

PART OF THE NORTHWEST 1/4 OF SECTION 8, T.2N. R.39E.B.M.

N.W. COR. SEC. 8
T.2N. R.39E.B.M.
C.P. & F. BY L.S. 760

WEST 1/4 SEC. 8
T. & N. R. 39 E. B.M.
C.P. & F. BY L.S. 827



First American Title Company
Idaho Falls, Idaho 83404

This sketch is made solely for the purpose of assisting in locating the premises. The company assumes no liability for alleged loss or damage which may result from reliance on this map.

