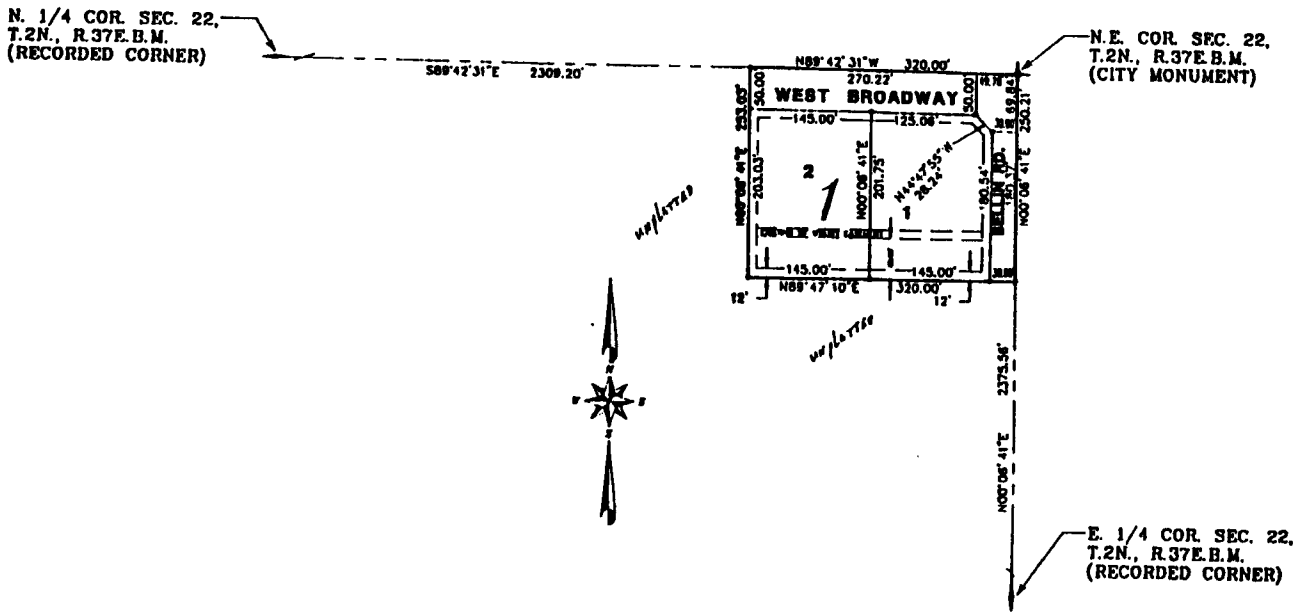


**THE FIRST AMENDED PLAT OF  
SKI'S ACRES  
DIVISION NO. 1  
TO THE CITY OF IDAHO FALLS, BONNEVILLE COUNTY, IDAHO  
PART OF THE N.E. 1/4 OF SECTION 22, T.2N., R.37E.B.M.**



**First American Title Company**

Idaho Falls, Idaho 83404

This sketch is made solely for the purpose of assisting in locating the premises. The company assumes no liability for alleged loss or damage which may result from reliance on this map.



**NOTES**



Indicates a  $1/2" \times 24"$  iron rod placed with a yellow plastic cap marked L.S. 760.

utility easements are 10' thru each lot. unless otherwise noted.