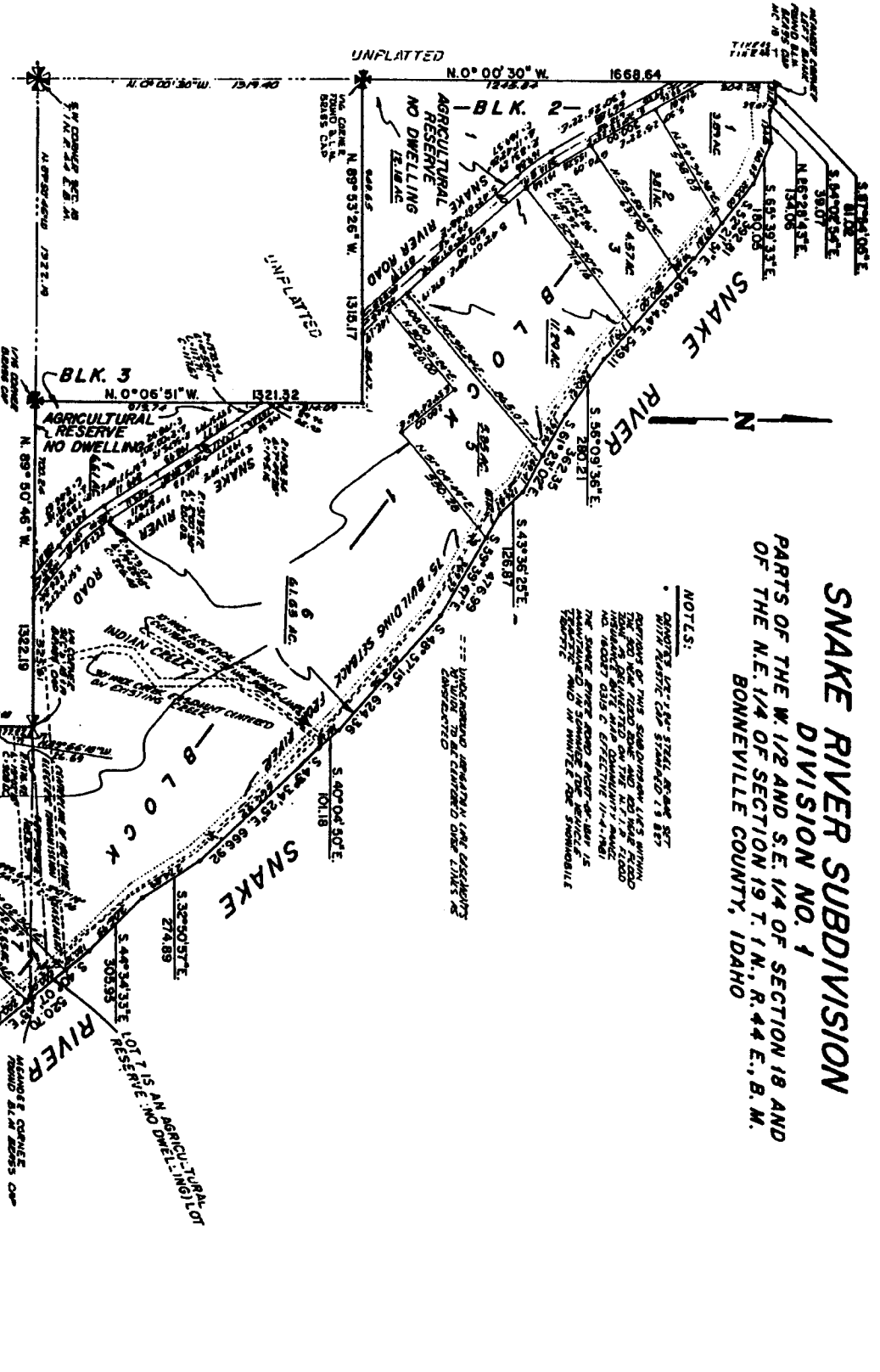


# SNAKE RIVER SUBDIVISION DIVISION NO. 1

PARTS OF THE W. 1/2 AND S.E. 1/4 OF SECTION 18 AND  
OF THE N.E. 1/4 OF SECTION 19 T. 1 N., R. 44 E., B. M.  
BONNEVILLE COUNTY, IDAHO

**NOTES:**  
 1. APPROX. 1 1/2" STEEL PIPE SET WITH 1/2" SPACING 75' BY 75'  
 2. PORTION OF THIS SUBDIVISION LIES WITHIN THE 100' WIDE FLOOD PLAIN AND 500' WIDE FLOOD PLAIN AS SHOWN ON THE FLOOD PLAIN MAP OF BONNEVILLE COUNTY, IDAHO, AS PUBLISHED BY THE U.S. GEOLOGICAL SURVEY, WASHINGTON, D.C., EFFECTIVE 11-4-1961.  
 3. THE SNAKE RIVER AND BRANCHES THEREOF IS UNIMPROVED, IS SUBJECT TO FLOODS, AND IS NOT SUITABLE FOR IRRIGATION AND IS WHOLLY FOR SHOWBOAT USE.



**First American Title Company**  
 Idaho Falls, Idaho 83404

This sketch is made solely for the purpose of assisting in locating the premises. The company assumes no liability for alleged loss or damage which may result from reliance on this map.

