

# SNAKE RIVER LANDING - DIVISION NO. 1

## AN ADDITION TO THE CITY OF IDAHO FALLS, BONNEVILLE COUNTY, IDAHO

### BEING PART OF THE S.1/2 OF SECTION 24, NW/2 OF SECTION 25, E.1/2 OF SECTION 26 T.2 N. R. 37 E., B.M. INCLUDING A REPLAT OF LOTS 1 THRU 7 BLOCK 1, AND RECREATION DRIVE OF EAGLE RIDGE, DIVISION NO. 1

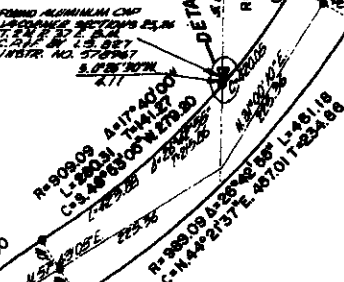
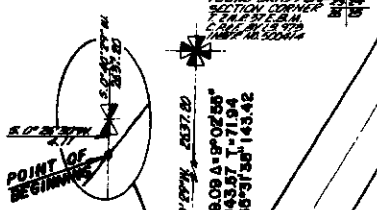
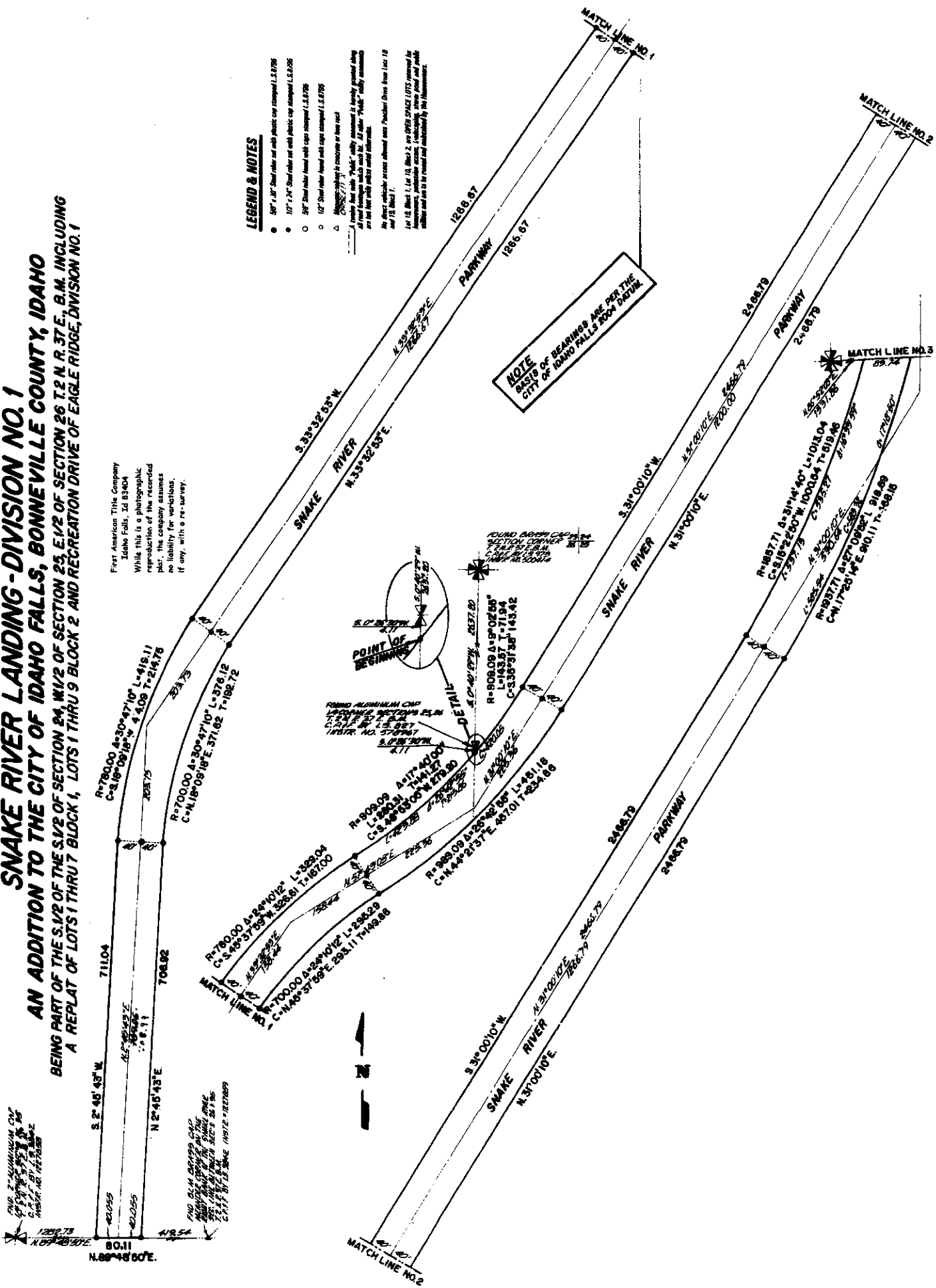
THE CITY OF IDAHO FALLS, IDAHO  
 HAS ADOPTED THIS PLAN  
 AS A RECREATION DRIVE  
 AND TRAIL TO BE LOCATED  
 IN THE CITY OF IDAHO FALLS, IDAHO  
 AS SHOWN ON THIS PLAN  
 DATED 10/12/2009  
 BY THE CITY ENGINEER  
 AND THE CITY CLERK

First American Title Company  
 Idaho Falls, Id 83404  
 While this is a photographic  
 reproduction of the recorded  
 plat, the company assumes  
 no liability for variations,  
 if any, with a re-survey.

#### LEGEND & NOTES

- 36" x 36" Steel rebar set with plastic cap stamped L.S. 8795
  - 12" x 12" Steel rebar set with plastic cap stamped L.S. 8795
  - 36" Steel rebar found with cap stamped L.S. 8795
  - 12" Steel rebar found with cap stamped L.S. 8795
  - △ 36" x 36" x 1/2" rebar set in concrete on line road
- (Circle has "PLAT" utility easement is hereby granted along all road frontages which shall be 30' wide "PLAT" utility easements on the line road which shall be 30' wide.  
 All other utility easements shall be as shown on this plan.  
 No other utility easements shall be shown on this plan.  
 Let 18 Block 1, Lot 10, Block 2, and 36" x 36" x 1/2" rebar set in concrete on line road be removed, and the line road be widened to 30' wide and the utility easements, pedestrian access, landscaping, street and public utility easements be as shown on this plan.  
 All other utility easements shall be as shown on this plan.  
 All other utility easements shall be as shown on this plan.

**NOTE**  
 BASIS OF BEARINGS ARE PER THE CITY OF IDAHO FALLS PLAT DATA.



THE CITY ENGINEER  
 AND THE CITY CLERK  
 HAVE REVIEWED THIS PLAN  
 AND APPROVE THE SAME  
 AS SHOWN ON THIS PLAN  
 DATED 10/12/2009  
 BY THE CITY ENGINEER  
 AND THE CITY CLERK