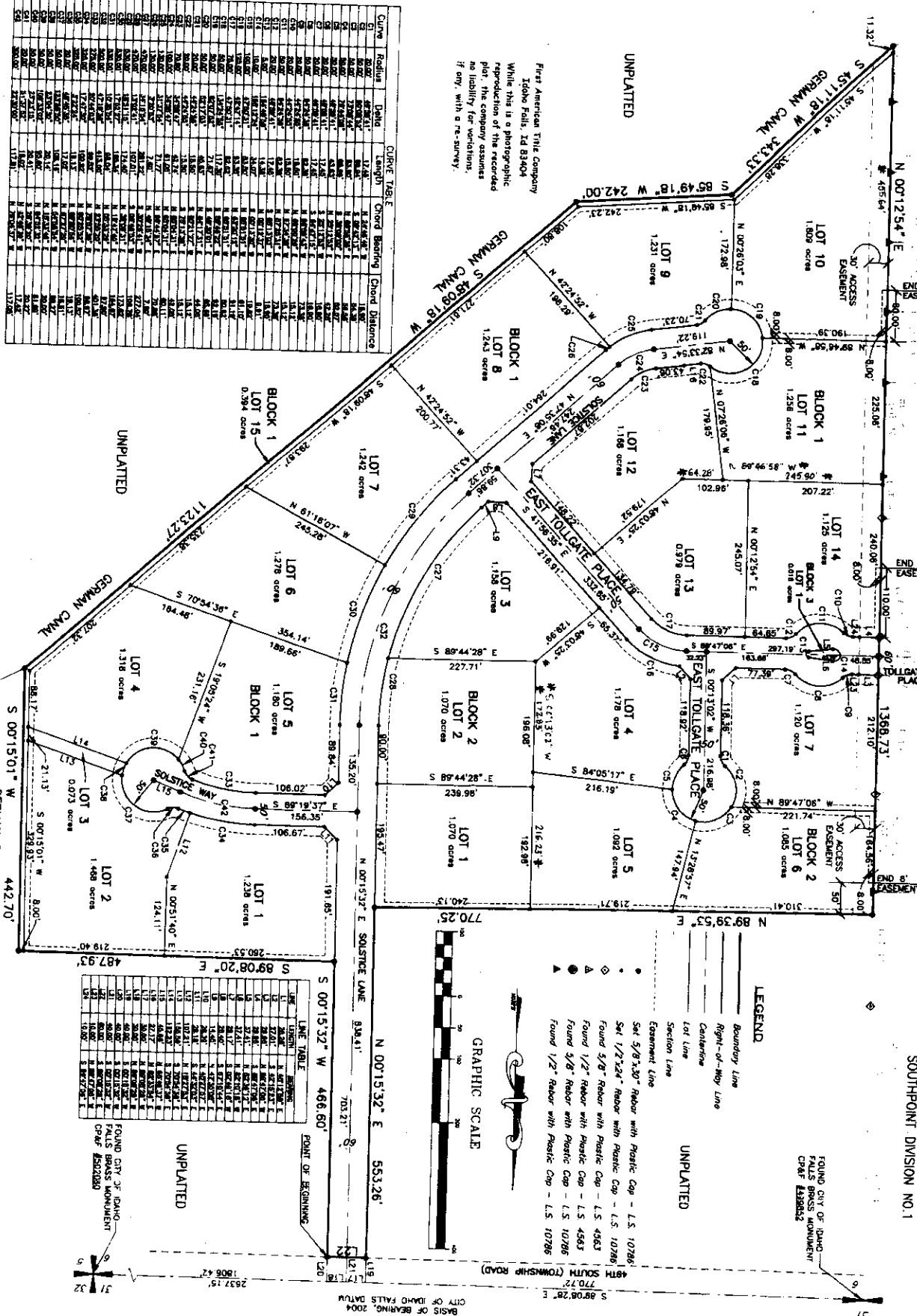


# SOLSTICE DIVISION NO. 1

AN ADDITION TO THE CITY OF IDAHO FALLS  
BEING A PORTION OF GOVERNMENT LOT 2,  
IDAHO FALLS, BONNEVILLE COUNTY, IDAHO

SOUTHPOINT DIVISION NO. 4  
SOUTHPOINT DIVISION NO. 3  
SOUTHPOINT DIVISION NO. 2  
SOUTHPOINT DIVISION NO. 1



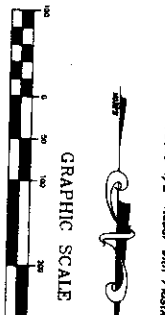
First American Title Company  
Idaho Falls, ID 83404  
While this is a photographic  
reproduction of the recorded  
plot, the company assumes  
no liability for variations,  
if any, with a re-survey.

Curve Table

Curve	Radius	Chord	Chord Bearing	Chord Distance
C1	80.00	48.84	N 89°44'28" E	48.84
C2	80.00	48.84	N 89°44'28" E	48.84
C3	80.00	48.84	N 89°44'28" E	48.84
C4	80.00	48.84	N 89°44'28" E	48.84
C5	80.00	48.84	N 89°44'28" E	48.84
C6	80.00	48.84	N 89°44'28" E	48.84
C7	80.00	48.84	N 89°44'28" E	48.84
C8	80.00	48.84	N 89°44'28" E	48.84
C9	80.00	48.84	N 89°44'28" E	48.84
C10	80.00	48.84	N 89°44'28" E	48.84
C11	80.00	48.84	N 89°44'28" E	48.84
C12	80.00	48.84	N 89°44'28" E	48.84
C13	80.00	48.84	N 89°44'28" E	48.84
C14	80.00	48.84	N 89°44'28" E	48.84
C15	80.00	48.84	N 89°44'28" E	48.84
C16	80.00	48.84	N 89°44'28" E	48.84
C17	80.00	48.84	N 89°44'28" E	48.84
C18	80.00	48.84	N 89°44'28" E	48.84
C19	80.00	48.84	N 89°44'28" E	48.84
C20	80.00	48.84	N 89°44'28" E	48.84
C21	80.00	48.84	N 89°44'28" E	48.84
C22	80.00	48.84	N 89°44'28" E	48.84
C23	80.00	48.84	N 89°44'28" E	48.84
C24	80.00	48.84	N 89°44'28" E	48.84
C25	80.00	48.84	N 89°44'28" E	48.84
C26	80.00	48.84	N 89°44'28" E	48.84
C27	80.00	48.84	N 89°44'28" E	48.84
C28	80.00	48.84	N 89°44'28" E	48.84
C29	80.00	48.84	N 89°44'28" E	48.84
C30	80.00	48.84	N 89°44'28" E	48.84
C31	80.00	48.84	N 89°44'28" E	48.84
C32	80.00	48.84	N 89°44'28" E	48.84
C33	80.00	48.84	N 89°44'28" E	48.84
C34	80.00	48.84	N 89°44'28" E	48.84
C35	80.00	48.84	N 89°44'28" E	48.84
C36	80.00	48.84	N 89°44'28" E	48.84
C37	80.00	48.84	N 89°44'28" E	48.84
C38	80.00	48.84	N 89°44'28" E	48.84
C39	80.00	48.84	N 89°44'28" E	48.84
C40	80.00	48.84	N 89°44'28" E	48.84
C41	80.00	48.84	N 89°44'28" E	48.84
C42	80.00	48.84	N 89°44'28" E	48.84
C43	80.00	48.84	N 89°44'28" E	48.84
C44	80.00	48.84	N 89°44'28" E	48.84
C45	80.00	48.84	N 89°44'28" E	48.84
C46	80.00	48.84	N 89°44'28" E	48.84
C47	80.00	48.84	N 89°44'28" E	48.84
C48	80.00	48.84	N 89°44'28" E	48.84
C49	80.00	48.84	N 89°44'28" E	48.84
C50	80.00	48.84	N 89°44'28" E	48.84
C51	80.00	48.84	N 89°44'28" E	48.84
C52	80.00	48.84	N 89°44'28" E	48.84
C53	80.00	48.84	N 89°44'28" E	48.84
C54	80.00	48.84	N 89°44'28" E	48.84
C55	80.00	48.84	N 89°44'28" E	48.84
C56	80.00	48.84	N 89°44'28" E	48.84
C57	80.00	48.84	N 89°44'28" E	48.84
C58	80.00	48.84	N 89°44'28" E	48.84
C59	80.00	48.84	N 89°44'28" E	48.84
C60	80.00	48.84	N 89°44'28" E	48.84
C61	80.00	48.84	N 89°44'28" E	48.84
C62	80.00	48.84	N 89°44'28" E	48.84
C63	80.00	48.84	N 89°44'28" E	48.84
C64	80.00	48.84	N 89°44'28" E	48.84
C65	80.00	48.84	N 89°44'28" E	48.84
C66	80.00	48.84	N 89°44'28" E	48.84
C67	80.00	48.84	N 89°44'28" E	48.84
C68	80.00	48.84	N 89°44'28" E	48.84
C69	80.00	48.84	N 89°44'28" E	48.84
C70	80.00	48.84	N 89°44'28" E	48.84
C71	80.00	48.84	N 89°44'28" E	48.84
C72	80.00	48.84	N 89°44'28" E	48.84
C73	80.00	48.84	N 89°44'28" E	48.84
C74	80.00	48.84	N 89°44'28" E	48.84
C75	80.00	48.84	N 89°44'28" E	48.84
C76	80.00	48.84	N 89°44'28" E	48.84
C77	80.00	48.84	N 89°44'28" E	48.84
C78	80.00	48.84	N 89°44'28" E	48.84
C79	80.00	48.84	N 89°44'28" E	48.84
C80	80.00	48.84	N 89°44'28" E	48.84
C81	80.00	48.84	N 89°44'28" E	48.84
C82	80.00	48.84	N 89°44'28" E	48.84
C83	80.00	48.84	N 89°44'28" E	48.84
C84	80.00	48.84	N 89°44'28" E	48.84
C85	80.00	48.84	N 89°44'28" E	48.84
C86	80.00	48.84	N 89°44'28" E	48.84
C87	80.00	48.84	N 89°44'28" E	48.84
C88	80.00	48.84	N 89°44'28" E	48.84
C89	80.00	48.84	N 89°44'28" E	48.84
C90	80.00	48.84	N 89°44'28" E	48.84
C91	80.00	48.84	N 89°44'28" E	48.84
C92	80.00	48.84	N 89°44'28" E	48.84
C93	80.00	48.84	N 89°44'28" E	48.84
C94	80.00	48.84	N 89°44'28" E	48.84
C95	80.00	48.84	N 89°44'28" E	48.84
C96	80.00	48.84	N 89°44'28" E	48.84
C97	80.00	48.84	N 89°44'28" E	48.84
C98	80.00	48.84	N 89°44'28" E	48.84
C99	80.00	48.84	N 89°44'28" E	48.84
C100	80.00	48.84	N 89°44'28" E	48.84

LINE TABLE

LINE	LENGTH	BEARING	POINT OF BEGINNING
L1	1.178	N 117°0	
L2	1.070	S 89°44'28" E	
L3	1.238	N 127°0	
L4	1.120	S 89°44'28" E	
L5	1.070	N 117°0	
L6	1.178	S 89°44'28" E	
L7	1.070	N 117°0	
L8	1.178	S 89°44'28" E	
L9	1.070	N 117°0	
L10	1.178	S 89°44'28" E	
L11	1.070	N 117°0	
L12	1.178	S 89°44'28" E	
L13	1.070	N 117°0	
L14	1.178	S 89°44'28" E	
L15	1.070	N 117°0	
L16	1.178	S 89°44'28" E	
L17	1.070	N 117°0	
L18	1.178	S 89°44'28" E	
L19	1.070	N 117°0	
L20	1.178	S 89°44'28" E	
L21	1.070	N 117°0	
L22	1.178	S 89°44'28" E	
L23	1.070	N 117°0	
L24	1.178	S 89°44'28" E	
L25	1.070	N 117°0	
L26	1.178	S 89°44'28" E	
L27	1.070	N 117°0	
L28	1.178	S 89°44'28" E	
L29	1.070	N 117°0	
L30	1.178	S 89°44'28" E	
L31	1.070	N 117°0	
L32	1.178	S 89°44'28" E	
L33	1.070	N 117°0	
L34	1.178	S 89°44'28" E	
L35	1.070	N 117°0	
L36	1.178	S 89°44'28" E	
L37	1.070	N 117°0	
L38	1.178	S 89°44'28" E	
L39	1.070	N 117°0	
L40	1.178	S 89°44'28" E	
L41	1.070	N 117°0	
L42	1.178	S 89°44'28" E	
L43	1.070	N 117°0	
L44	1.178	S 89°44'28" E	
L45	1.070	N 117°0	
L46	1.178	S 89°44'28" E	
L47	1.070	N 117°0	
L48	1.178	S 89°44'28" E	
L49	1.070	N 117°0	
L50	1.178	S 89°44'28" E	



LEGEND

- Boundary Line
- Right-of-Way Line
- Centerline
- Lot Line
- Section Line
- Easement Line

UNPLATTED

FOUND CITY OF IDAHO  
FALLS BRASS MONUMENT  
CP&F 432822

NOTES

1. UNLESS OTHERWISE SHOWN, ALL LOTS ARE INTENDED TO BE PLATTED IN ACCORDANCE WITH THE CITY OF IDAHO FALLS SUBDIVISION REGULATIONS AND THE CITY OF IDAHO FALLS ZONING ORDINANCES.
2. THE CITY OF IDAHO FALLS HAS REVIEWED THIS SUBDIVISION AND HAS DETERMINED THAT IT IS IN ACCORDANCE WITH THE APPLICABLE ZONING REGULATIONS OF THE CITY OF IDAHO FALLS.
3. THE CITY OF IDAHO FALLS HAS REVIEWED THIS SUBDIVISION AND HAS DETERMINED THAT IT IS IN ACCORDANCE WITH THE APPLICABLE ZONING REGULATIONS OF THE CITY OF IDAHO FALLS.
4. THE CITY OF IDAHO FALLS HAS REVIEWED THIS SUBDIVISION AND HAS DETERMINED THAT IT IS IN ACCORDANCE WITH THE APPLICABLE ZONING REGULATIONS OF THE CITY OF IDAHO FALLS.
5. THE CITY OF IDAHO FALLS HAS REVIEWED THIS SUBDIVISION AND HAS DETERMINED THAT IT IS IN ACCORDANCE WITH THE APPLICABLE ZONING REGULATIONS OF THE CITY OF IDAHO FALLS.
6. THE CITY OF IDAHO FALLS HAS REVIEWED THIS SUBDIVISION AND HAS DETERMINED THAT IT IS IN ACCORDANCE WITH THE APPLICABLE ZONING REGULATIONS OF THE CITY OF IDAHO FALLS.
7. THE CITY OF IDAHO FALLS HAS REVIEWED THIS SUBDIVISION AND HAS DETERMINED THAT IT IS IN ACCORDANCE WITH THE APPLICABLE ZONING REGULATIONS OF THE CITY OF IDAHO FALLS.
8. THE CITY OF IDAHO FALLS HAS REVIEWED THIS SUBDIVISION AND HAS DETERMINED THAT IT IS IN ACCORDANCE WITH THE APPLICABLE ZONING REGULATIONS OF THE CITY OF IDAHO FALLS.
9. THE CITY OF IDAHO FALLS HAS REVIEWED THIS SUBDIVISION AND HAS DETERMINED THAT IT IS IN ACCORDANCE WITH THE APPLICABLE ZONING REGULATIONS OF THE CITY OF IDAHO FALLS.
10. THE CITY OF IDAHO FALLS HAS REVIEWED THIS SUBDIVISION AND HAS DETERMINED THAT IT IS IN ACCORDANCE WITH THE APPLICABLE ZONING REGULATIONS OF THE CITY OF IDAHO FALLS.

FOUND CITY OF IDAHO  
FALLS BRASS MONUMENT  
CP&F 432822