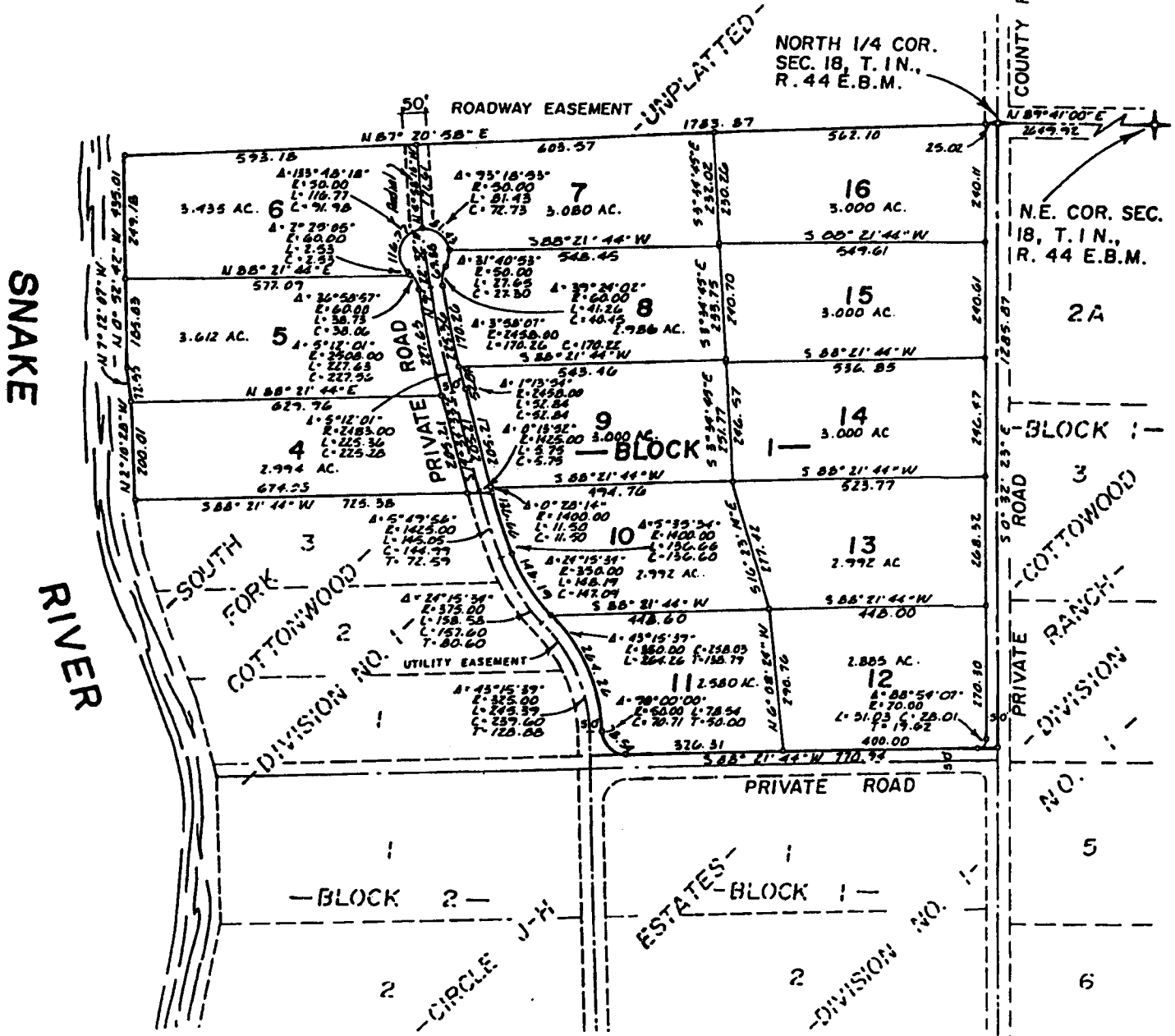


# SOUTH FORK COTTONWOOD

## DIVISION NO. 2

### BONNEVILLE COUNTY, IDAHO

PART OF: SECTION 18, T. 1 N., R. 44 E. B.M.



#### NOTES

— indicates a 1/2" x 24" iron rod placed with yellow plastic cap marked L.S. 760.

- - - utility easements are 8' through each lot unless otherwise shown.

a 10' wide utility easement is reserved along the street frontage of all lots.

the County will not maintain roads until constructed to current County standards and a letter of acceptance given.