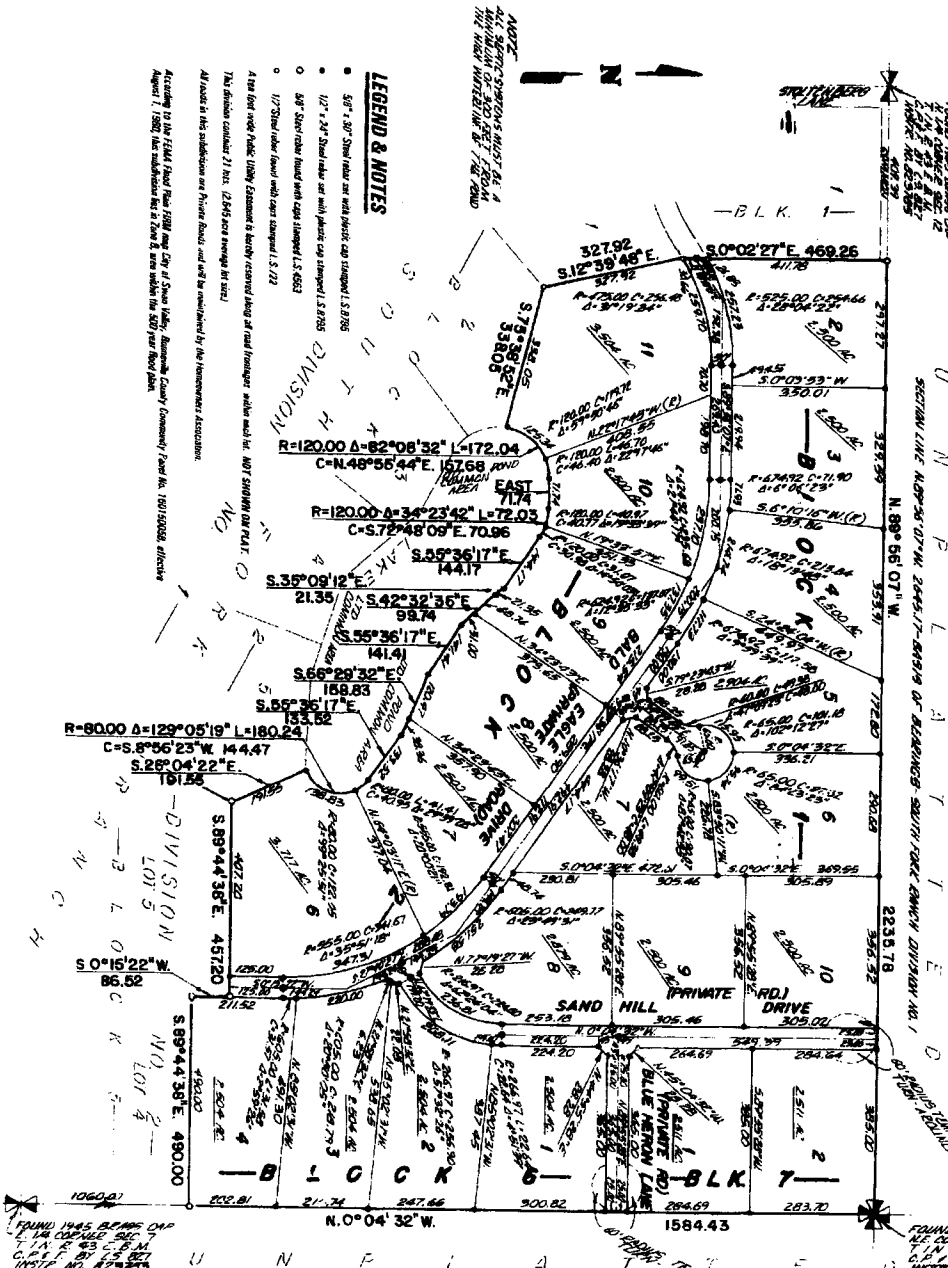


SOUTH FORK RANCH DIVISION NO. 5
AN ADDITION TO THE CITY OF SWAN VALLEY, BONNEVILLE COUNTY, IDAHO
BEING PART OF THE NE 1/4 OF SECTION 12 T. 1 N. R. 43 E. B.M.

First American Title Company
 Idaho Falls, Idaho 83401
 While this is a photographic
 reproduction of the recorded
 plat, the Company assumes no
 liability for variations,
 if any, with a re-survey.



LEGEND & NOTES

- 3/8" x 3/8" Steel rebar set with plastic cap stamped L.S. 8703
 - 1/2" x 3/4" Steel rebar set with plastic cap stamped L.S. 8703
 - 3/8" Steel rebar found with cap stamped L.S. 6523
 - 1/2" Steel rebar found with cap stamped L.S. 712
- A 100 foot wide Public Utility Easement is hereby reserved along at least four corners of each lot shown on this plat. All roads in this subdivision are Private Roads and will be maintained by the Homeowners Association.
- This division contains 21 lots. (2,945 total square feet area)
- All roads in this subdivision are Private Roads and will be maintained by the Homeowners Association.
- According to the Final Plat filed with the City of Swan Valley, Bonneville County, Idaho, under the 1901/1902A Ordinance.

FOUND 1945 BEARS CAP
 IN THE CORNER SEC 12
 T. 1 N. R. 43 E. B.M.
 C. 111.11' S. 12.00' W.
 INSTR. NO. 82325

FOUND 1945 BEARS CAP
 IN THE CORNER SEC 12
 T. 1 N. R. 43 E. B.M.
 C. 111.11' S. 12.00' W.
 INSTR. NO. 82325