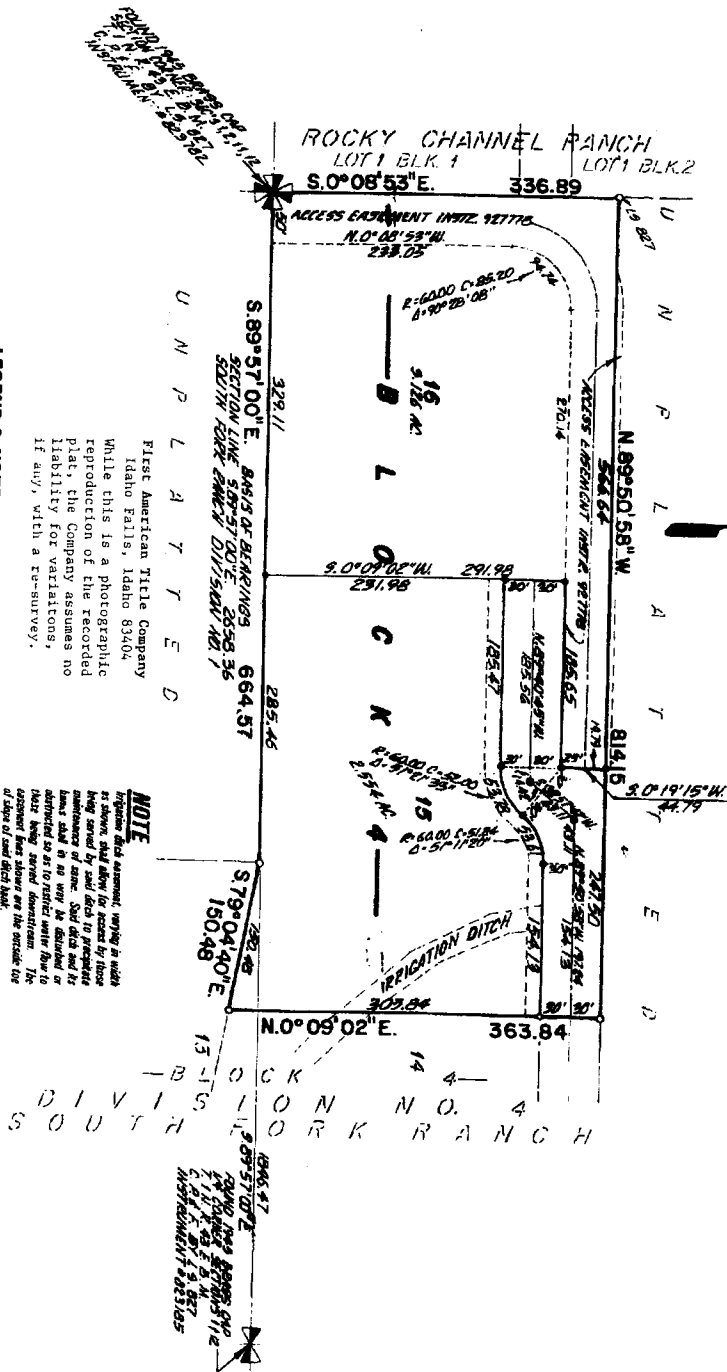


**SOUTH FORK RANCH, DIVISION NO. 6**  
**AN ADDITION TO THE CITY OF SWAN VALLEY, BONNEVILLE COUNTY, IDAHO**  
**BEING PART OF THE S.W. 1/4 S.W. 1/4 SEC. 1 AND OF THE N.W. 1/4 N.W. 1/4 SEC. 12 T.1 N. R. 43 E. B.M.**



First American Title Company  
 Idaho Falls, Idaho 83404  
 While this is a photographic  
 reproduction of the recorded  
 plat, the Company assumes no  
 liability for variations,  
 if any, with a re-survey.

**LEGEND & NOTES**

- 5/8" x 3/4" Steel ruler set with plastic cap stamped I.S. 8795
- 1/2" x 24" Steel ruler set with plastic cap stamped I.S. 8795
- 5/8" Steel ruler found with caps stamped I.S. 8795
- 1/2" Steel ruler found with caps stamped I.S. 8795 (I.L. 299) (I.M. 299) (I.P. 299) (I.S. 8795)

A tripod foot with Public Utility Equipment is hereby reserved along Rocky Channel Road within each lot. All other public utility easements are as shown.  
 The official recorder 2 Mt. (2022 acre average) in size.  
 Whether the County or the City will maintain roads used improved in County Standards and officially approved and accepted.

Damage to the plat, private drawings and original plat, or any other plat, shall be the responsibility of the person who caused the damage. The City of Swan Valley, Bonneville County, Idaho, shall not be liable for any damage to the plat, private drawings and original plat, or any other plat, caused by the person who caused the damage.

According to the 1914 Flood Plain Act, City of Swan Valley, Bonneville County, Idaho, shall not be liable for any damage to the plat, private drawings and original plat, or any other plat, caused by the person who caused the damage.

**NOTE**  
 This plat was prepared, verified in width and length, and the area of the plat is correct as shown. The plat is prepared by the person who caused the damage. The City of Swan Valley, Bonneville County, Idaho, shall not be liable for any damage to the plat, private drawings and original plat, or any other plat, caused by the person who caused the damage.