

SOUTH FORK RANCH

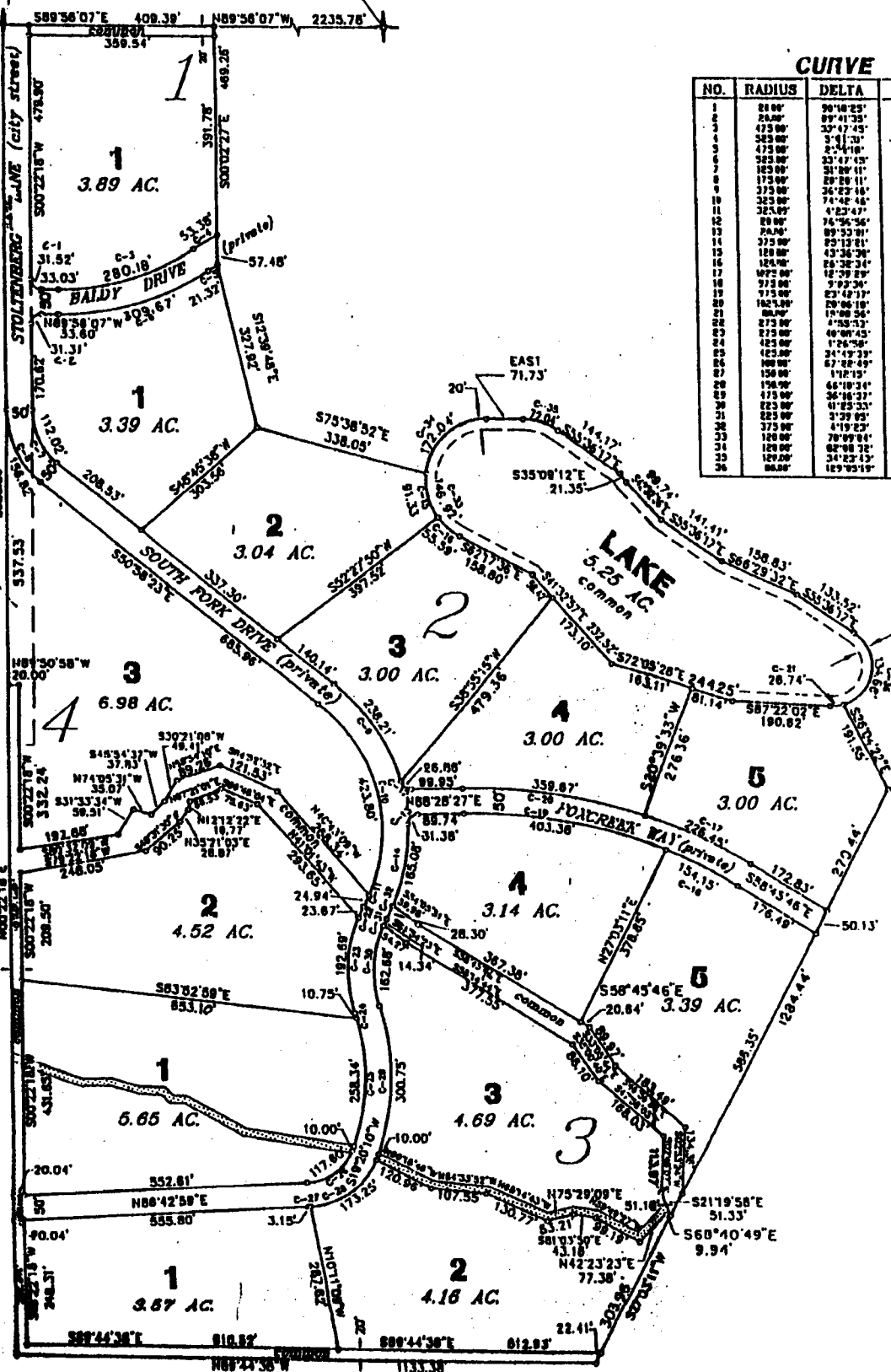
DIVISION NO. 1

CITY OF SWAN VALLEY, BONNEVILLE COUNTY, IDAHO

PART OF THE N.E. 1/4, SEC. 12, T. 1 N., R. 43 E.B.M.

N. 1/4 COR. SEC. 12,
T. 1 N., R. 43 E.B.M.
(BRASS CAP)

N.E. COR. SEC. 12,
T. 1 N., R. 43 E.B.M.
(BRASS CAP)



CURVE TABLE

NO.	RADIUS	DELTA	ARC	CHORD	TANGENT
1	21.00'	90°10'23"	31.38'	28.26'	28.11'
2	24.00'	89°41'33"	31.71'	28.91'	19.99'
3	47.500'	35°47'45"	60.38'	274.23'	144.26'
4	47.500'	3°41'23"	53.28'	37.28'	26.71'
5	47.500'	3°41'23"	53.28'	21.32'	16.64'
6	52.500'	33°47'45"	309.67'	203.89'	159.49'
7	102.500'	31°09'11"	112.02'	109.21'	60.70'
8	175.000'	29°28'11"	156.82'	151.57'	82.12'
9	375.000'	26°12'46"	238.81'	231.823'	123.28'
10	325.000'	74°42'46"	627.70'	174.48'	240.59'
11	325.000'	4°27'47"	84.91'	84.92'	12.48'
12	80.00'	76°56'56"	26.86'	24.89'	13.89'
13	24.00'	89°53'01"	31.38'	28.26'	15.96'
14	375.000'	82°13'21"	163.00'	163.73'	43.90'
15	188.000'	43°36'36"	91.33'	89.13'	48.01'
16	188.000'	26°32'34"	53.99'	53.10'	28.26'
17	175.000'	12°39'28"	286.48'	225.39'	172.69'
18	715.000'	6°22'28"	151.12'	153.37'	71.27'
19	715.000'	23°49'17"	483.38'	480.51'	204.12'
20	162.120'	29°06'10"	329.67'	327.83'	181.70'
21	80.000'	18°06'56"	26.86'	26.81'	17.49'
22	275.000'	4°53'53"	53.67'	53.64'	23.94'
23	275.000'	40°00'45"	170.69'	168.77'	106.47'
24	425.000'	1°26'58"	16.75'	16.75'	3.20'
25	425.000'	21°49'19"	250.84'	254.28'	132.30'
26	100.000'	67°38'49"	117.60'	116.31'	64.67'
27	150.000'	17°12'15"	3.15'	3.15'	1.50'
28	150.000'	66°10'34"	172.85'	163.70'	97.41'
29	175.000'	36°48'27"	208.75'	233.75'	132.61'
30	325.000'	41°53'37"	162.60'	159.16'	85.00'
31	325.000'	3°29'05"	11.31'	11.31'	7.17'
32	375.000'	4°19'23"	23.30'	23.21'	14.13'
33	120.000'	70°09'04"	146.98'	137.98'	84.26'
34	120.000'	12°08'12"	17.84'	17.84'	8.94'
35	107.000'	34°23'15"	128.04'	127.60'	78.96'
36	80.000'	129°03'19"	104.24'	144.17'	168.06'

First American Title Company
Idaho Falls, Idaho 83404

This sketch is made solely for the purpose of assisting in locating the premises. The company assumes no liability for alleged loss or damage which may result from reliance on this map.

