

SOUTH TOWNE INDUSTRIAL PARK

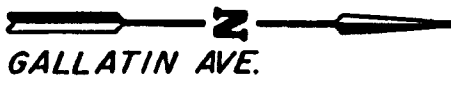
DIVISION NO. 1
PART OF

SECTION 25, TOWNSHIP 2 NORTH, RANGE 37 EAST B.M.
AN ADDITION TO THE
CITY OF IDAHO FALLS, BONNEVILLE COUNTY, IDAHO

First American Title Company

Idaho Falls, Idaho 83404

This sketch is made solely for the purpose of assisting in locating the premises. The company assumes no liability for alleged loss or damage which may result from reliance on this map.



GALLATIN AVE.

Burns Brothers Concrete
2385 Gallatin Ave.

25TH STREET

LESLIE AVE.

SOUTH IDAHO FALLS
ADDITION

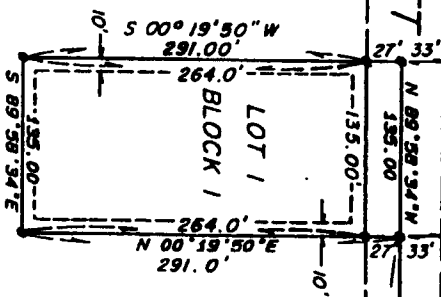
MEAD ADDITION
Division No. 1
Roy Groth Oil Co.
1810 So. Yellowstone Hwy.

AL-SID
ADDITION

Max Ker & Son Lumber Co.
1798 So. Yellowstone Hwy.

UNPLATTED

HOWARD
ADDITION
Division No. 1



E 1/4 COR. SEC. 25
T.2N., R.37E., B.M.
(CITY MONUMENT)

S.E. COR. SEC. 25
T.2N., R.37E., B.M.
(CITY MONUMENT)

N 0°01'47\"/>

