

SOUTHPOINT DIVISION NO. 4

AN ADDITION TO THE CITY OF IDAHO FALLS
BEING A PORTION OF GOVERNMENT LOT 3,
AND THE SW 1/4 OF THE NW 1/4 OF SECTION 6, T.1N.,
R.38E., B.M.,
IDAHO FALLS, BONNEVILLE COUNTY, IDAHO

Platt American Title Company
Idaho Falls, Idaho 83404
While this is a photographic
reproduction of the recorded
plat of the City of Idaho Falls,
Platt American Title Company assumes no
liability for variations,
if any, with a re-survey.

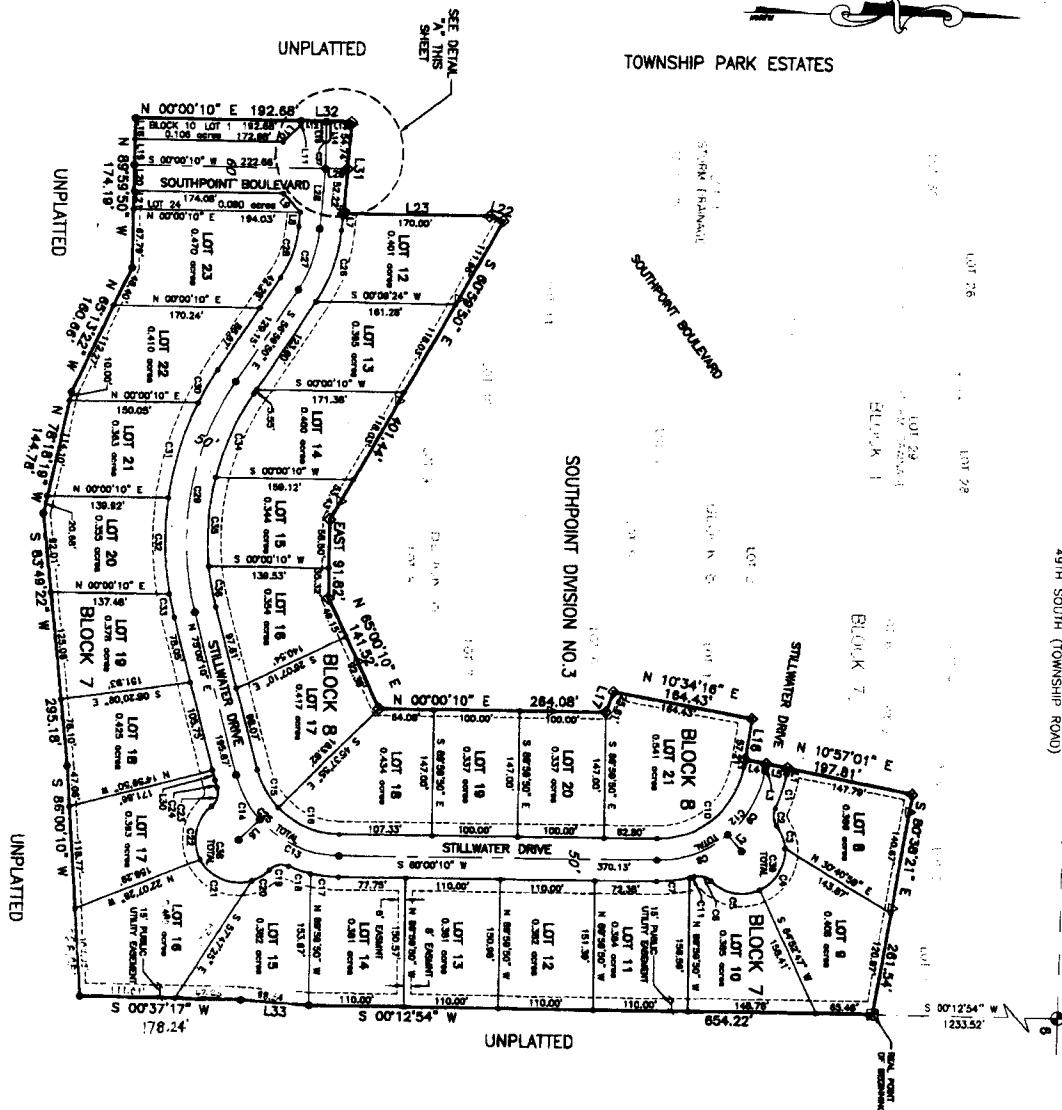
1/4 CORNER
FOUND ALUM. CAP
F.P.M. U.S. 872

(BASIS OF BEARING CITY OF IDAHO FALLS DATA)
49TH SOUTH (TOWNSHIP ROAD)
S 89°00'31" E 286.83'

SECTION CORNER
FOUND BRASS CAP
C.P.M. U.S. 918
T.1N., R.38E.



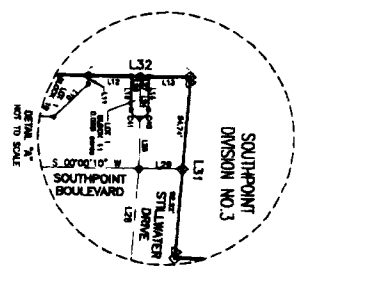
TOWNSHIP PARK ESTATES



LINE	LENGTH	BEARING
L1	182.68	N 00°00'10" E
L2	182.68	S 89°59'50" W
L3	174.08	N 00°00'10" E
L4	174.08	S 89°59'50" W
L5	174.08	N 00°00'10" E
L6	174.08	S 89°59'50" W
L7	174.08	N 00°00'10" E
L8	174.08	S 89°59'50" W
L9	174.08	N 00°00'10" E
L10	174.08	S 89°59'50" W
L11	174.08	N 00°00'10" E
L12	174.08	S 89°59'50" W
L13	174.08	N 00°00'10" E
L14	174.08	S 89°59'50" W
L15	174.08	N 00°00'10" E
L16	174.08	S 89°59'50" W
L17	174.08	N 00°00'10" E
L18	174.08	S 89°59'50" W
L19	174.08	N 00°00'10" E
L20	174.08	S 89°59'50" W
L21	174.08	N 00°00'10" E
L22	174.08	S 89°59'50" W
L23	174.08	N 00°00'10" E
L24	174.08	S 89°59'50" W
L25	174.08	N 00°00'10" E
L26	174.08	S 89°59'50" W
L27	174.08	N 00°00'10" E
L28	174.08	S 89°59'50" W
L29	174.08	N 00°00'10" E
L30	174.08	S 89°59'50" W
L31	174.08	N 00°00'10" E
L32	174.08	S 89°59'50" W
L33	174.08	N 00°00'10" E
L34	174.08	S 89°59'50" W
L35	174.08	N 00°00'10" E
L36	174.08	S 89°59'50" W
L37	174.08	N 00°00'10" E
L38	174.08	S 89°59'50" W
L39	174.08	N 00°00'10" E
L40	174.08	S 89°59'50" W
L41	174.08	N 00°00'10" E
L42	174.08	S 89°59'50" W
L43	174.08	N 00°00'10" E
L44	174.08	S 89°59'50" W
L45	174.08	N 00°00'10" E
L46	174.08	S 89°59'50" W
L47	174.08	N 00°00'10" E
L48	174.08	S 89°59'50" W
L49	174.08	N 00°00'10" E
L50	174.08	S 89°59'50" W
L51	174.08	N 00°00'10" E
L52	174.08	S 89°59'50" W
L53	174.08	N 00°00'10" E
L54	174.08	S 89°59'50" W
L55	174.08	N 00°00'10" E
L56	174.08	S 89°59'50" W
L57	174.08	N 00°00'10" E
L58	174.08	S 89°59'50" W
L59	174.08	N 00°00'10" E
L60	174.08	S 89°59'50" W
L61	174.08	N 00°00'10" E
L62	174.08	S 89°59'50" W
L63	174.08	N 00°00'10" E
L64	174.08	S 89°59'50" W
L65	174.08	N 00°00'10" E
L66	174.08	S 89°59'50" W
L67	174.08	N 00°00'10" E
L68	174.08	S 89°59'50" W
L69	174.08	N 00°00'10" E
L70	174.08	S 89°59'50" W
L71	174.08	N 00°00'10" E
L72	174.08	S 89°59'50" W
L73	174.08	N 00°00'10" E
L74	174.08	S 89°59'50" W
L75	174.08	N 00°00'10" E
L76	174.08	S 89°59'50" W
L77	174.08	N 00°00'10" E
L78	174.08	S 89°59'50" W
L79	174.08	N 00°00'10" E
L80	174.08	S 89°59'50" W
L81	174.08	N 00°00'10" E
L82	174.08	S 89°59'50" W
L83	174.08	N 00°00'10" E
L84	174.08	S 89°59'50" W
L85	174.08	N 00°00'10" E
L86	174.08	S 89°59'50" W
L87	174.08	N 00°00'10" E
L88	174.08	S 89°59'50" W
L89	174.08	N 00°00'10" E
L90	174.08	S 89°59'50" W
L91	174.08	N 00°00'10" E
L92	174.08	S 89°59'50" W
L93	174.08	N 00°00'10" E
L94	174.08	S 89°59'50" W
L95	174.08	N 00°00'10" E
L96	174.08	S 89°59'50" W
L97	174.08	N 00°00'10" E
L98	174.08	S 89°59'50" W
L99	174.08	N 00°00'10" E
L100	174.08	S 89°59'50" W

Curve	Radius	Delta	Length	Chord Bearing	Chord Distance
C1	182.68	180°	365.36	N 00°00'10" E	365.36
C2	182.68	180°	365.36	S 89°59'50" W	365.36
C3	174.08	180°	348.16	N 00°00'10" E	348.16
C4	174.08	180°	348.16	S 89°59'50" W	348.16
C5	174.08	180°	348.16	N 00°00'10" E	348.16
C6	174.08	180°	348.16	S 89°59'50" W	348.16
C7	174.08	180°	348.16	N 00°00'10" E	348.16
C8	174.08	180°	348.16	S 89°59'50" W	348.16
C9	174.08	180°	348.16	N 00°00'10" E	348.16
C10	174.08	180°	348.16	S 89°59'50" W	348.16
C11	174.08	180°	348.16	N 00°00'10" E	348.16
C12	174.08	180°	348.16	S 89°59'50" W	348.16
C13	174.08	180°	348.16	N 00°00'10" E	348.16
C14	174.08	180°	348.16	S 89°59'50" W	348.16
C15	174.08	180°	348.16	N 00°00'10" E	348.16
C16	174.08	180°	348.16	S 89°59'50" W	348.16
C17	174.08	180°	348.16	N 00°00'10" E	348.16
C18	174.08	180°	348.16	S 89°59'50" W	348.16
C19	174.08	180°	348.16	N 00°00'10" E	348.16
C20	174.08	180°	348.16	S 89°59'50" W	348.16
C21	174.08	180°	348.16	N 00°00'10" E	348.16
C22	174.08	180°	348.16	S 89°59'50" W	348.16
C23	174.08	180°	348.16	N 00°00'10" E	348.16
C24	174.08	180°	348.16	S 89°59'50" W	348.16
C25	174.08	180°	348.16	N 00°00'10" E	348.16
C26	174.08	180°	348.16	S 89°59'50" W	348.16
C27	174.08	180°	348.16	N 00°00'10" E	348.16
C28	174.08	180°	348.16	S 89°59'50" W	348.16
C29	174.08	180°	348.16	N 00°00'10" E	348.16
C30	174.08	180°	348.16	S 89°59'50" W	348.16
C31	174.08	180°	348.16	N 00°00'10" E	348.16
C32	174.08	180°	348.16	S 89°59'50" W	348.16
C33	174.08	180°	348.16	N 00°00'10" E	348.16
C34	174.08	180°	348.16	S 89°59'50" W	348.16
C35	174.08	180°	348.16	N 00°00'10" E	348.16
C36	174.08	180°	348.16	S 89°59'50" W	348.16
C37	174.08	180°	348.16	N 00°00'10" E	348.16
C38	174.08	180°	348.16	S 89°59'50" W	348.16
C39	174.08	180°	348.16	N 00°00'10" E	348.16
C40	174.08	180°	348.16	S 89°59'50" W	348.16
C41	174.08	180°	348.16	N 00°00'10" E	348.16
C42	174.08	180°	348.16	S 89°59'50" W	348.16
C43	174.08	180°	348.16	N 00°00'10" E	348.16
C44	174.08	180°	348.16	S 89°59'50" W	348.16
C45	174.08	180°	348.16	N 00°00'10" E	348.16
C46	174.08	180°	348.16	S 89°59'50" W	348.16
C47	174.08	180°	348.16	N 00°00'10" E	348.16
C48	174.08	180°	348.16	S 89°59'50" W	348.16
C49	174.08	180°	348.16	N 00°00'10" E	348.16
C50	174.08	180°	348.16	S 89°59'50" W	348.16

- LEGEND**
- Boundary Line
 - Right-of-Way Line
 - Centerline
 - Lot Line
 - Section Line
 - Easement Line
 - Row Pallet of Rebar with Found 5/8" Rebar with Plastic Cap - L.S. 4563
 - Set 5/8"x30" Rebar with Plastic Cap - L.S. 10786
 - Set 1/2"x24" Rebar with Plastic Cap - L.S. 10786
 - Found 5/8" Rebar with Plastic Cap - L.S. 4563
 - Found 1/2" Rebar with Plastic Cap - L.S. 4563
 - Found Brass Cap or Aluminum Cap (as indicated)



NOTE: Public Utility Easements 15' wide along all street frontages.
All other utility easements 6' wide unless otherwise noted.

NOTES

1. THESE PROPOSED LOTS ARE BEING SUBMITTED AS A PRELIMINARY PLAN TO THE PUBLIC UTILITIES COMMISSION FOR REVIEW AND APPROVAL. THE PUBLIC UTILITIES COMMISSION HAS THE RIGHT TO REJECT ANY PART OF THIS PLAN AND TO REJECT THE PUBLIC UTILITIES COMMISSION'S DECISION ON ANY PART OF THIS PLAN. THE PUBLIC UTILITIES COMMISSION'S DECISION ON ANY PART OF THIS PLAN SHALL BE FINAL AND BINDING ON ALL PARTIES.
2. ALL LOTS AND INTERESTS IN THESE LOTS SHALL BE CONVEYED TO EACH LOT.
3. THE CITY OF IDAHO FALLS SHALL BE RESPONSIBLE FOR THE INSTALLATION OF ALL UTILITY LINES AND EQUIPMENT ON OR OVER ANY SMALL CORNER IN THIS SUBDIVISION. THE CITY OF IDAHO FALLS SHALL BE RESPONSIBLE FOR THE INSTALLATION OF ALL UTILITY LINES AND EQUIPMENT ON OR OVER ANY SMALL CORNER IN THIS SUBDIVISION. THE CITY OF IDAHO FALLS SHALL BE RESPONSIBLE FOR THE INSTALLATION OF ALL UTILITY LINES AND EQUIPMENT ON OR OVER ANY SMALL CORNER IN THIS SUBDIVISION.
4. THE CITY OF IDAHO FALLS SHALL BE RESPONSIBLE FOR THE INSTALLATION OF ALL UTILITY LINES AND EQUIPMENT ON OR OVER ANY SMALL CORNER IN THIS SUBDIVISION. THE CITY OF IDAHO FALLS SHALL BE RESPONSIBLE FOR THE INSTALLATION OF ALL UTILITY LINES AND EQUIPMENT ON OR OVER ANY SMALL CORNER IN THIS SUBDIVISION.
5. THE CITY OF IDAHO FALLS SHALL BE RESPONSIBLE FOR THE INSTALLATION OF ALL UTILITY LINES AND EQUIPMENT ON OR OVER ANY SMALL CORNER IN THIS SUBDIVISION. THE CITY OF IDAHO FALLS SHALL BE RESPONSIBLE FOR THE INSTALLATION OF ALL UTILITY LINES AND EQUIPMENT ON OR OVER ANY SMALL CORNER IN THIS SUBDIVISION.