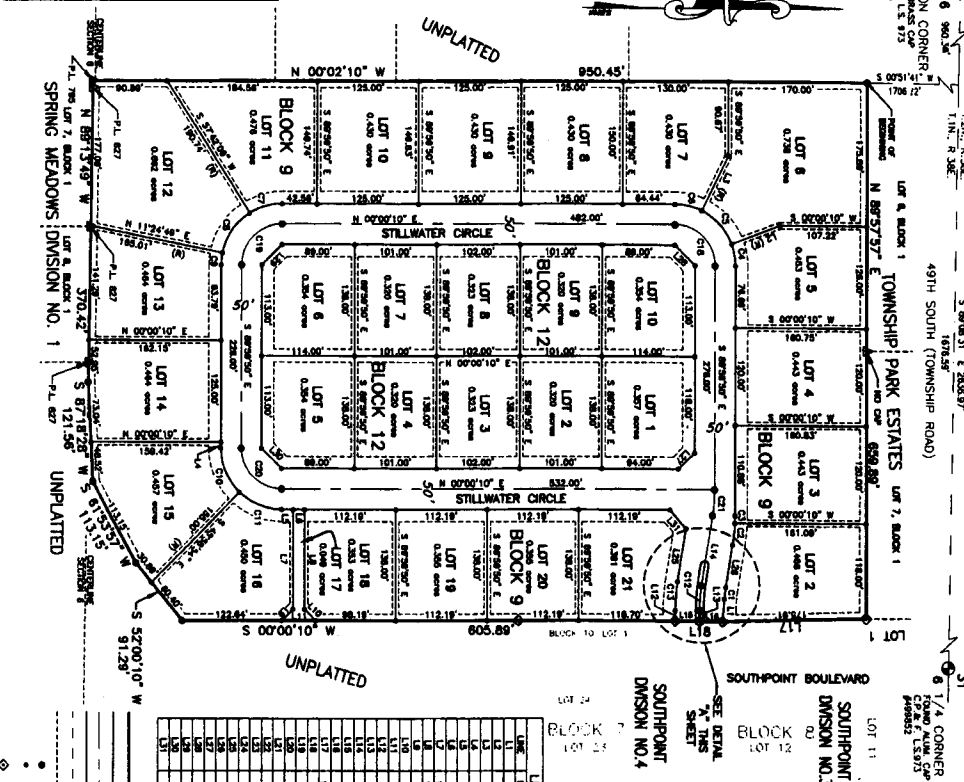


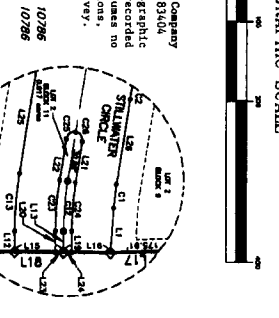
SOUTHPOINT DIVISION NO. 5

AN ADDITION TO THE CITY OF IDAHO FALLS
BEING A PORTION OF GOVERNMENT LOT 5,
AND THE SW 1/4 OF THE NW 1/4 OF SECTION 6, T. 1N., R. 38E., B.M.,
IDAHO FALLS, BONNEVILLE COUNTY, IDAHO
(BASIS OF BEARING, CITY OF IDAHO FALLS DATA, REC-2004)
S 89°21' E 285.97'
1678.59'

Curve	Radius	Delta	Chord Bearing	Chord Distance
C1	150.00'	14.84°	S 87°22' E	14.84'
C2	200.00'	21.47°	S 87°12' E	21.47'
C3	250.00'	28.10°	S 87°02' E	28.10'
C4	300.00'	34.73°	S 86°52' E	34.73'
C5	350.00'	41.36°	S 86°42' E	41.36'
C6	400.00'	47.99°	S 86°32' E	47.99'
C7	450.00'	54.62°	S 86°22' E	54.62'
C8	500.00'	61.25°	S 86°12' E	61.25'
C9	550.00'	67.88°	S 86°02' E	67.88'
C10	600.00'	74.51°	S 85°52' E	74.51'
C11	650.00'	81.14°	S 85°42' E	81.14'
C12	700.00'	87.77°	S 85°32' E	87.77'
C13	750.00'	94.40°	S 85°22' E	94.40'
C14	800.00'	101.03°	S 85°12' E	101.03'
C15	850.00'	107.66°	S 85°02' E	107.66'
C16	900.00'	114.29°	S 84°52' E	114.29'
C17	950.00'	120.92°	S 84°42' E	120.92'
C18	1000.00'	127.55°	S 84°32' E	127.55'
C19	1050.00'	134.18°	S 84°22' E	134.18'
C20	1100.00'	140.81°	S 84°12' E	140.81'
C21	1150.00'	147.44°	S 84°02' E	147.44'
C22	1200.00'	154.07°	S 83°52' E	154.07'
C23	1250.00'	160.70°	S 83°42' E	160.70'
C24	1300.00'	167.33°	S 83°32' E	167.33'
C25	1350.00'	173.96°	S 83°22' E	173.96'



LINE	BEARING	DISTANCE
1	N 00°02'10" W	950.45'
2	S 87°18'22" W	121.56'
3	S 87°00'10" W	911.29'
4	S 87°18'22" W	121.56'
5	S 87°00'10" W	911.29'
6	S 87°18'22" W	121.56'
7	S 87°00'10" W	911.29'
8	S 87°18'22" W	121.56'
9	S 87°00'10" W	911.29'
10	S 87°18'22" W	121.56'
11	S 87°00'10" W	911.29'
12	S 87°18'22" W	121.56'
13	S 87°00'10" W	911.29'
14	S 87°18'22" W	121.56'
15	S 87°00'10" W	911.29'
16	S 87°18'22" W	121.56'
17	S 87°00'10" W	911.29'
18	S 87°18'22" W	121.56'
19	S 87°00'10" W	911.29'
20	S 87°18'22" W	121.56'
21	S 87°00'10" W	911.29'



NOTES

1. UNLESS OTHERWISE SHOWN, ALL LOTS ARE VESTED OR DEEMED TO BE VESTED IN THE LANDOWNER OF RECORD FOR PUBLIC UTILITY PURPOSES. THE CITY OF IDAHO FALLS HAS THE RIGHT TO TAKE EASEMENTS FOR PUBLIC UTILITY PURPOSES OVER THE CORNER (a) FEET ALONG ROAD LINES AND ROAD (b) FEET ALONG SIDE WALK LINES (FORMERLY, EASEMENTS SHALL NOT PRECLUDE THE CONSTRUCTION OF HAND-DRAINED DRAINAGE AND EASEMENTS FOR PUBLIC UTILITY PURPOSES). THESE LOTS ARE TO BE OWNED AND MAINTAINED BY THE SOUTHPOINT HOMEOWNERS ASSOCIATION.

2. LOT 2, BLOCK 11, LOT 17, BLOCK 9 ARE OPEN SPACE LOTS RESERVED FOR FUTURE DEVELOPMENT AND ACCESS TO THE HOMEOWNERS ASSOCIATION.

